


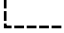




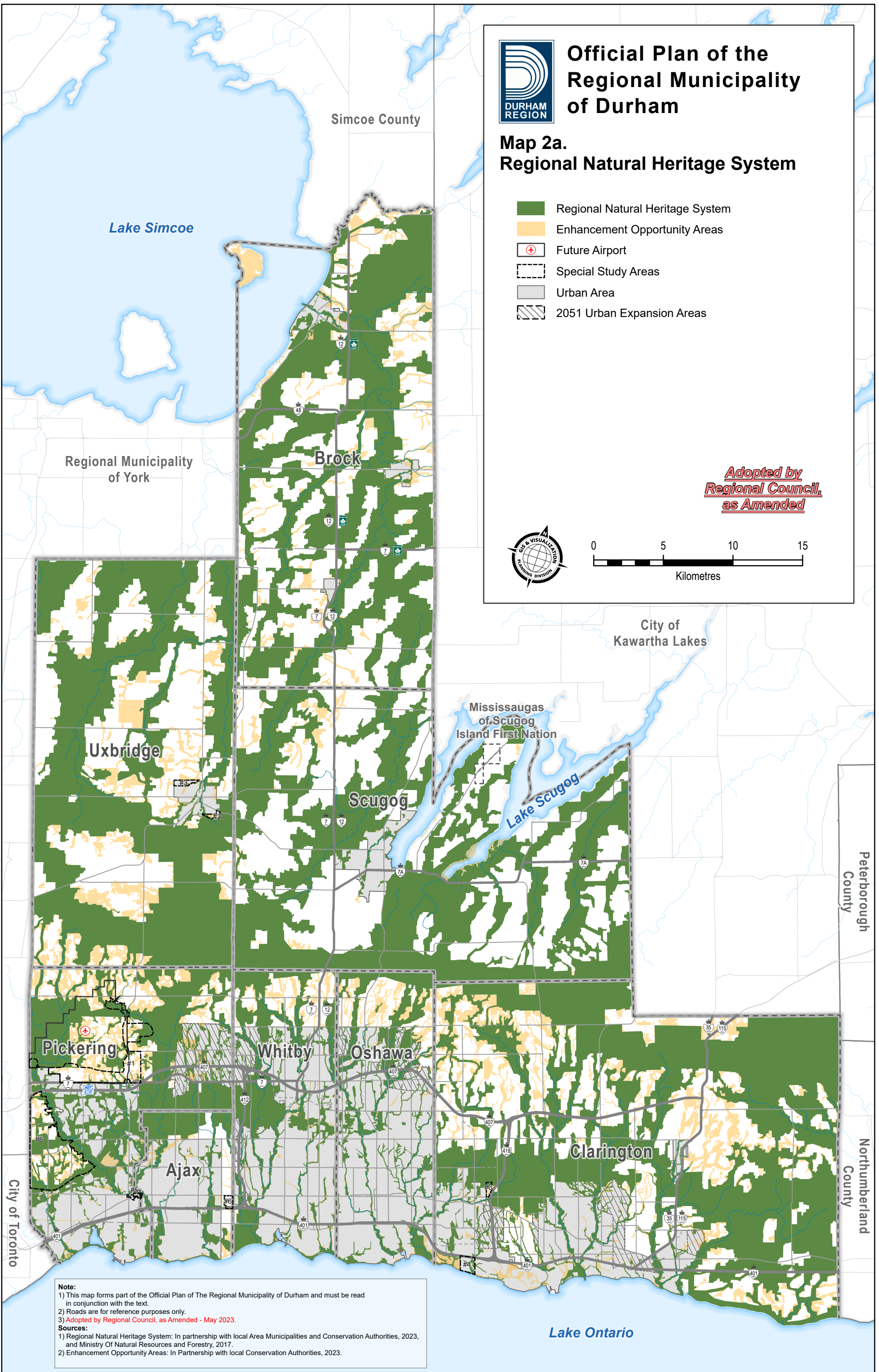


Official Plan of the Regional Municipality of Durham

Map 2a. Regional Natural Heritage System

-  Regional Natural Heritage System
-  Enhancement Opportunity Areas
-  Future Airport
-  Special Study Areas
-  Urban Area
-  2051 Urban Expansion Areas

*Adopted by
Regional Council,
as Amended*



Note:
 1) This map forms part of the Official Plan of The Regional Municipality of Durham and must be read in conjunction with the text.
 2) Roads are for reference purposes only.
 3) *Adopted by Regional Council, as Amended - May 2023.*

Sources:
 1) Regional Natural Heritage System: In partnership with local Area Municipalities and Conservation Authorities, 2023, and Ministry Of Natural Resources and Forestry, 2017.
 2) Enhancement Opportunity Areas: In Partnership with local Conservation Authorities, 2023.

Lake Ontario



Official Plan of the Regional Municipality of Durham

Map 2b. Provincial Oak Ridges Moraine Conservation Plan and Greenbelt Plan Land Use Designations

Provincial Natural Heritage System

- Greenbelt Natural Heritage System
- Growth Plan Natural Heritage System
- Oak Ridges Moraine Natural Core and Natural Linkage Areas

Oak Ridges Moraine Land Use

- Oak Ridges Moraine Conservation Plan Boundary
- Natural Core Area
- Natural Linkage Area
- Countryside Area
- Settlement Area
- Rural Settlement
- Oak Ridges Moraine - Prime Agricultural

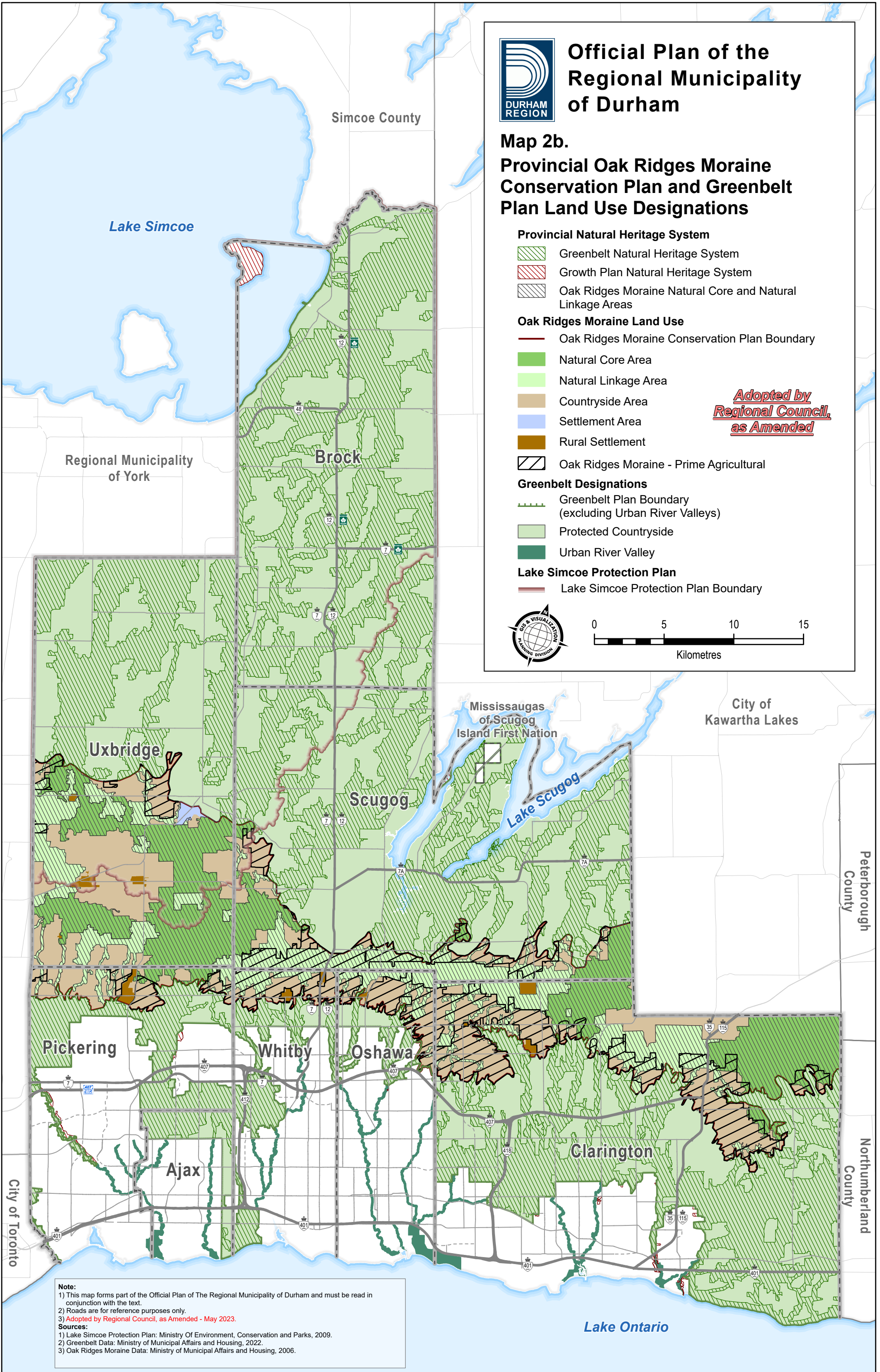
Greenbelt Designations

- Greenbelt Plan Boundary (excluding Urban River Valleys)
- Protected Countryside
- Urban River Valley

Lake Simcoe Protection Plan

- Lake Simcoe Protection Plan Boundary

*Adopted by
Regional Council,
as Amended*



Note:
 1) This map forms part of the Official Plan of The Regional Municipality of Durham and must be read in conjunction with the text.
 2) Roads are for reference purposes only.
 3) *Adopted by Regional Council, as Amended - May 2023.*

Sources:
 1) Lake Simcoe Protection Plan: Ministry Of Environment, Conservation and Parks, 2009.
 2) Greenbelt Data: Ministry of Municipal Affairs and Housing, 2022.
 3) Oak Ridges Moraine Data: Ministry of Municipal Affairs and Housing, 2006.



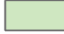


Official Plan of the Regional Municipality of Durham

Map 2c. Water Resources System – Key Hydrologic Features

Key Hydrologic Features

-  Provincially Significant Wetland
-  Other Evaluated Wetlands
-  Unevaluated Wetlands
-  Lakes
-  Permanent and Intermittent Streams
-  Kettle Lakes


Greenbelt Plan

-  Protected Countryside
-  Urban River Valley
-  Oak Ridges Moraine Conservation Plan Boundary

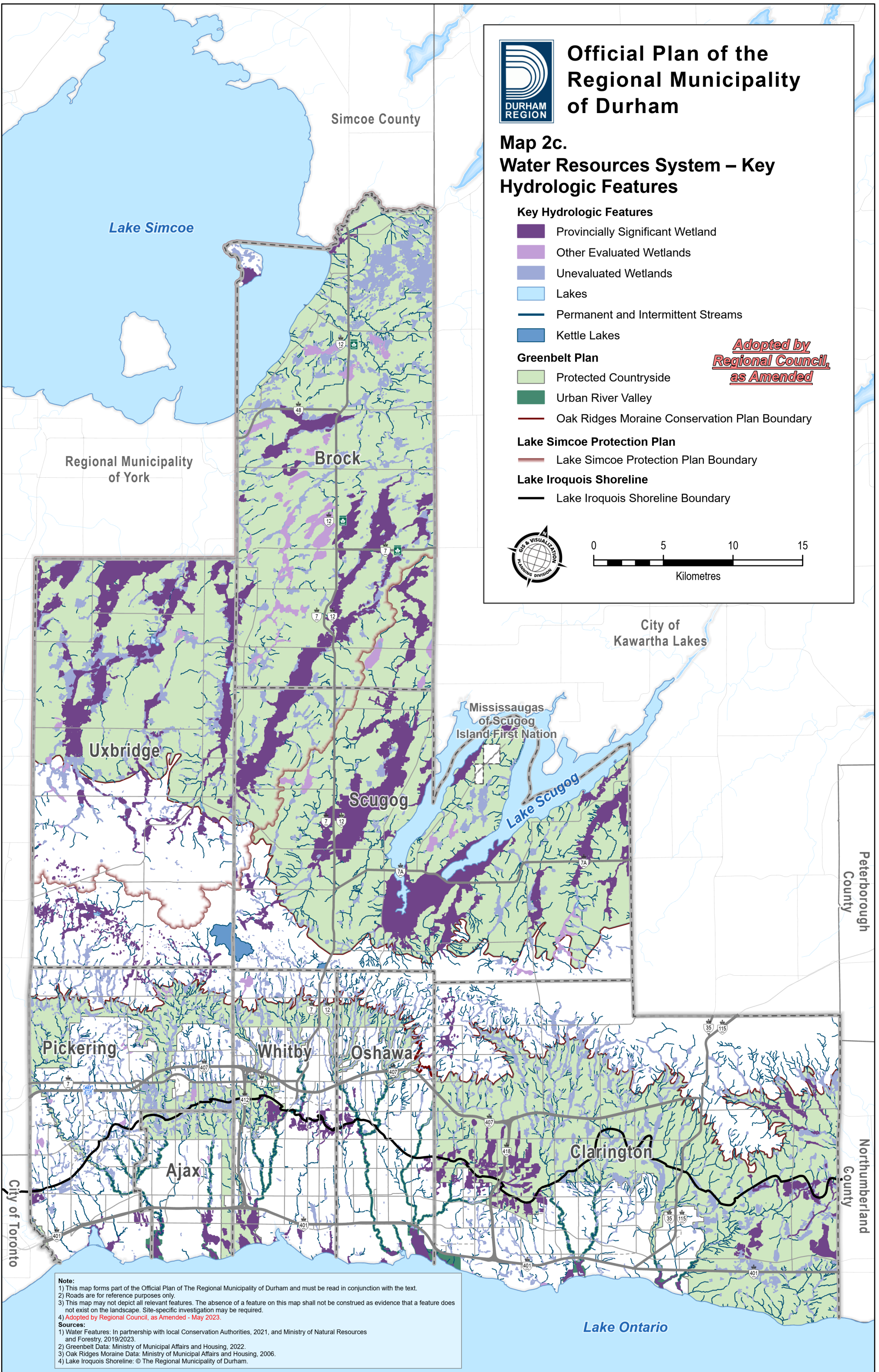
Lake Simcoe Protection Plan

-  Lake Simcoe Protection Plan Boundary

Lake Iroquois Shoreline

-  Lake Iroquois Shoreline Boundary

*Adopted by
Regional Council,
as Amended*



Note:
 1) This map forms part of the Official Plan of The Regional Municipality of Durham and must be read in conjunction with the text.
 2) Roads are for reference purposes only.
 3) This map may not depict all relevant features. The absence of a feature on this map shall not be construed as evidence that a feature does not exist on the landscape. Site-specific investigation may be required.
 4) *Adopted by Regional Council, as Amended - May 2023.*

Sources:
 1) Water Features: In partnership with local Conservation Authorities, 2021, and Ministry of Natural Resources and Forestry, 2019/2023.
 2) Greenbelt Data: Ministry of Municipal Affairs and Housing, 2022.
 3) Oak Ridges Moraine Data: Ministry of Municipal Affairs and Housing, 2006.
 4) Lake Iroquois Shoreline: © The Regional Municipality of Durham.

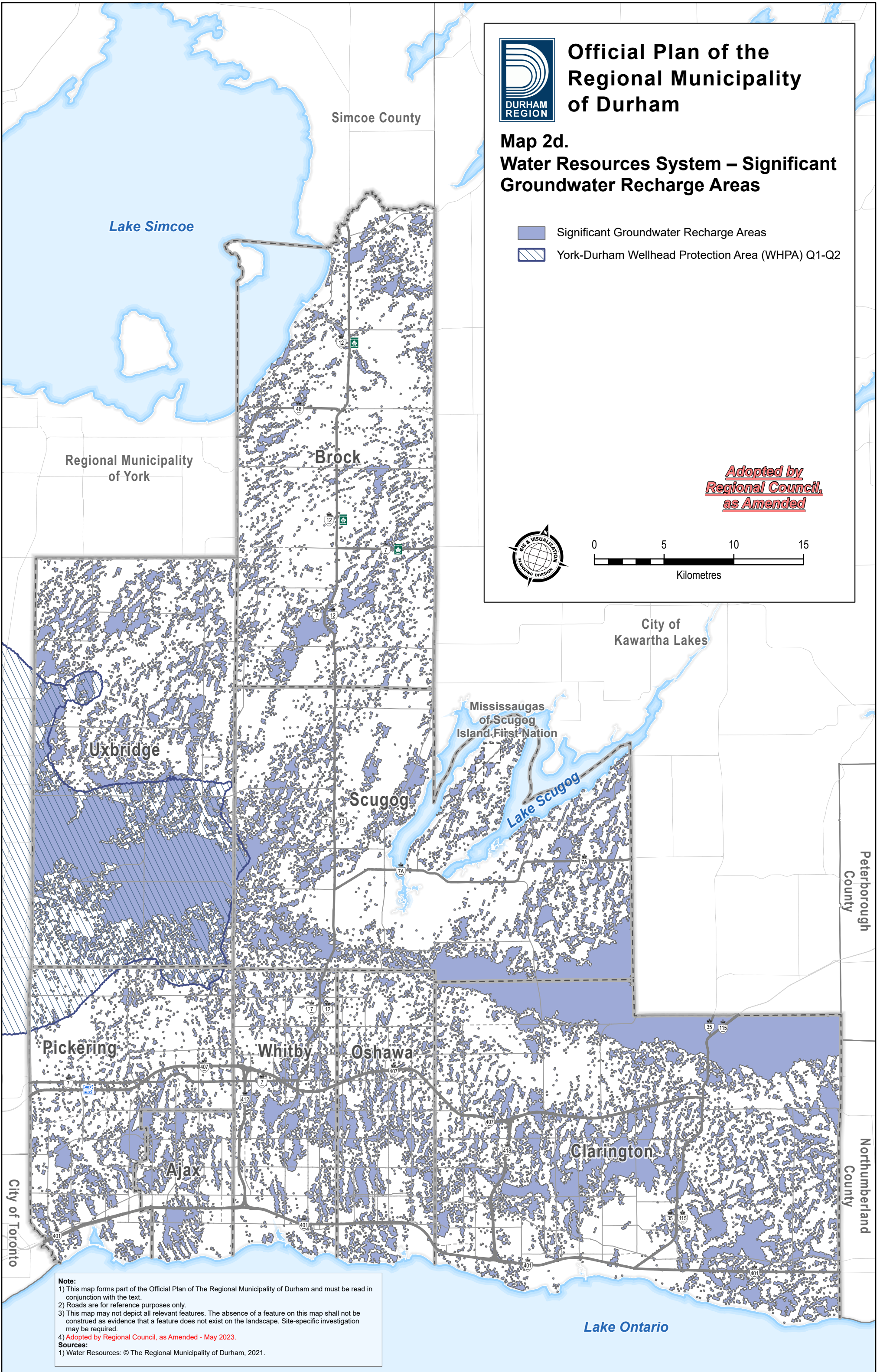


Official Plan of the Regional Municipality of Durham

Map 2d. Water Resources System – Significant Groundwater Recharge Areas

- Significant Groundwater Recharge Areas
- York-Durham Wellhead Protection Area (WHPA) Q1-Q2

Adopted by Regional Council, as Amended



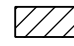

Note:
 1) This map forms part of the Official Plan of The Regional Municipality of Durham and must be read in conjunction with the text.
 2) Roads are for reference purposes only.
 3) This map may not depict all relevant features. The absence of a feature on this map shall not be construed as evidence that a feature does not exist on the landscape. Site-specific investigation may be required.
 4) *Adopted by Regional Council, as Amended - May 2023.*
Sources:
 1) Water Resources: © The Regional Municipality of Durham, 2021.



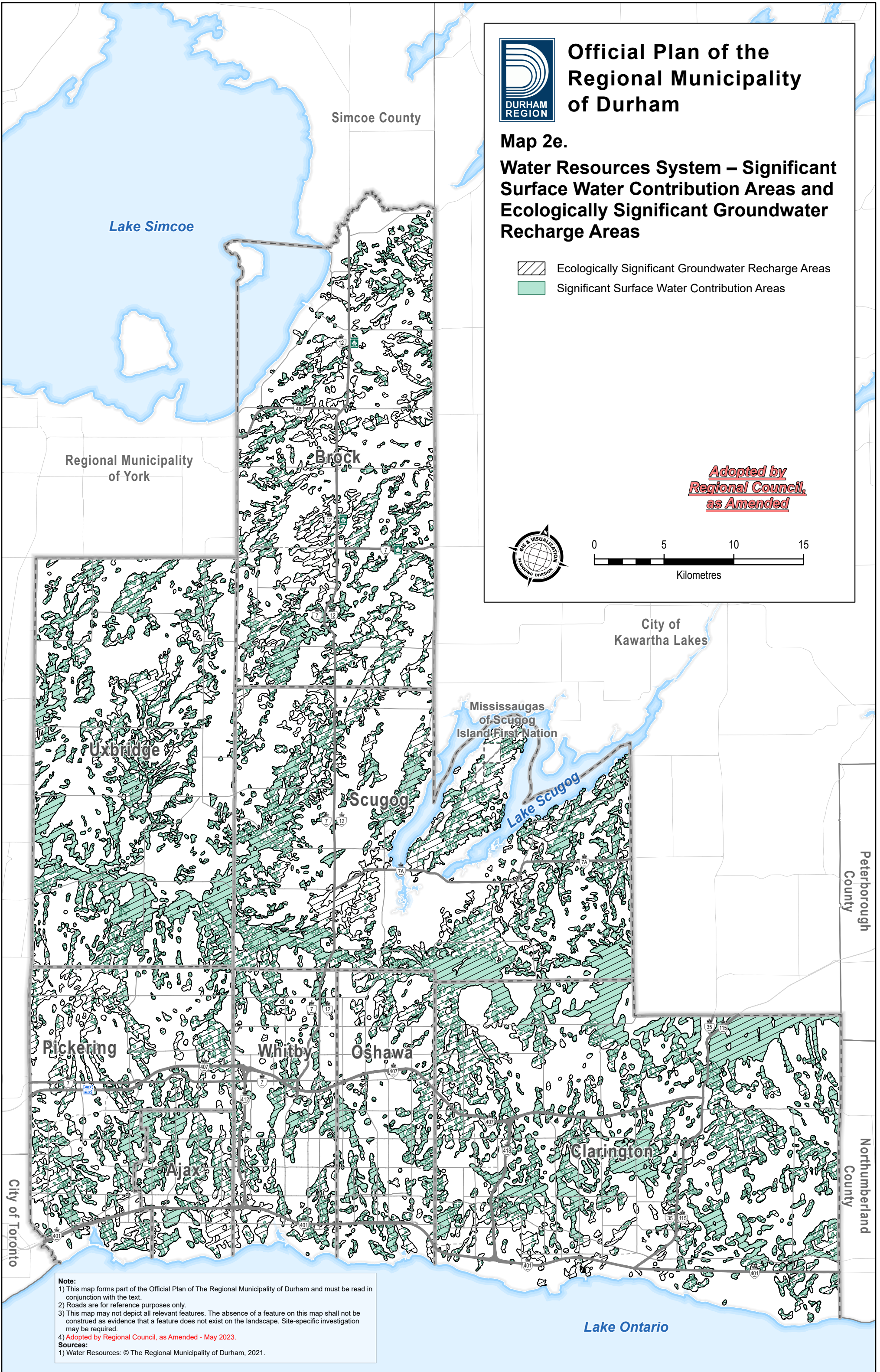
Official Plan of the Regional Municipality of Durham

Map 2e.

Water Resources System – Significant Surface Water Contribution Areas and Ecologically Significant Groundwater Recharge Areas

-  Ecologically Significant Groundwater Recharge Areas
-  Significant Surface Water Contribution Areas

*Adopted by
Regional Council,
as Amended*



Note:
 1) This map forms part of the Official Plan of The Regional Municipality of Durham and must be read in conjunction with the text.
 2) Roads are for reference purposes only.
 3) This map may not depict all relevant features. The absence of a feature on this map shall not be construed as evidence that a feature does not exist on the landscape. Site-specific investigation may be required.
 4) *Adopted by Regional Council, as Amended - May 2023.*
Sources:
 1) Water Resources: © The Regional Municipality of Durham, 2021.



Official Plan of the Regional Municipality of Durham

Map 2f. Source Water Protection

Wellhead Protection Areas (WHPA)

- Wellhead Protection Area - Q Downgradient Line
- York-Durham Wellhead Protection Area Q1-Q2
- WHPA-A
- WHPA-B
- WHPA-C
- WHPA-D

The WHPA's shown on this map were determined through the Durham Groundwater Modelling Project, and may not yet be approved by the Province of Ontario's Ministry of Environment and Climate Change (MOECC). Until they are approved, the applicable source protection plan should be consulted for exact boundaries.

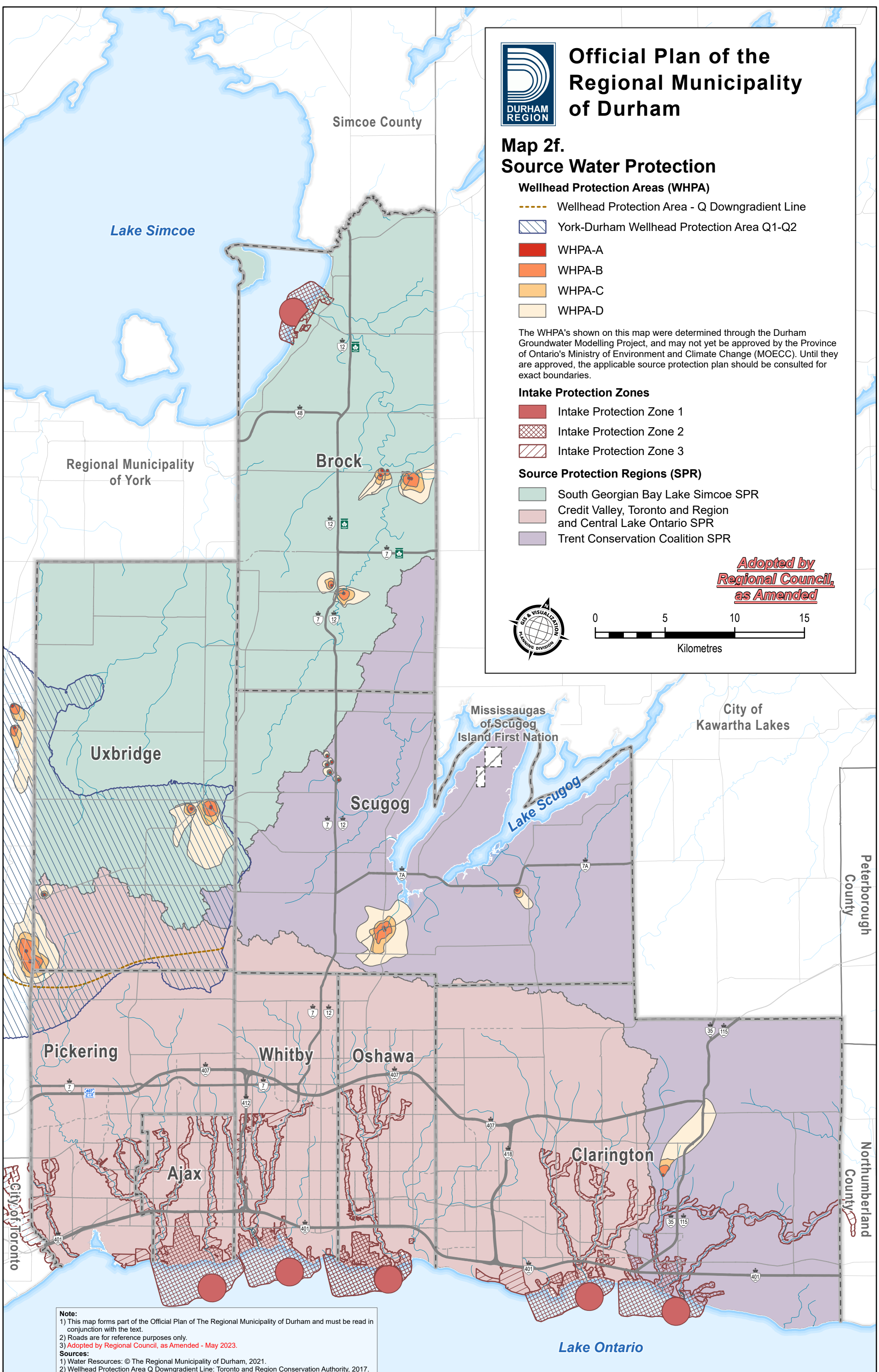
Intake Protection Zones

- Intake Protection Zone 1
- Intake Protection Zone 2
- Intake Protection Zone 3

Source Protection Regions (SPR)

- South Georgian Bay Lake Simcoe SPR
- Credit Valley, Toronto and Region and Central Lake Ontario SPR
- Trent Conservation Coalition SPR

***Adopted by
Regional Council,
as Amended***



Note:
 1) This map forms part of the Official Plan of The Regional Municipality of Durham and must be read in conjunction with the text.
 2) Roads are for reference purposes only.
 3) **Adopted by Regional Council, as Amended - May 2023.**
Sources:
 1) Water Resources: © The Regional Municipality of Durham, 2021.
 2) Wellhead Protection Area Q Downgradient Line: Toronto and Region Conservation Authority, 2017.

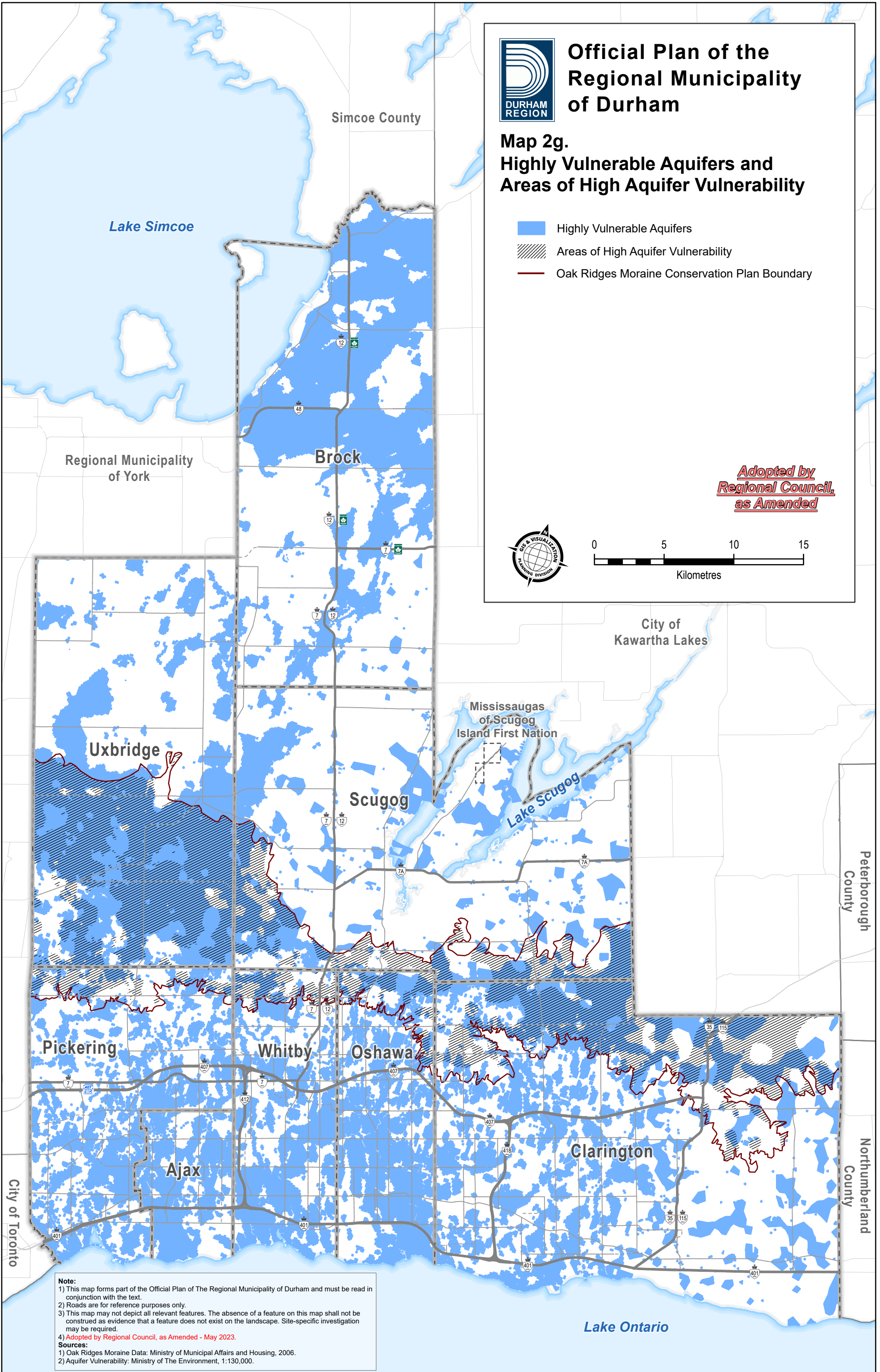


Official Plan of the Regional Municipality of Durham

Map 2g. Highly Vulnerable Aquifers and Areas of High Aquifer Vulnerability

- Highly Vulnerable Aquifers
- Areas of High Aquifer Vulnerability
- Oak Ridges Moraine Conservation Plan Boundary

Adopted by Regional Council, as Amended






Note:
 1) This map forms part of the Official Plan of The Regional Municipality of Durham and must be read in conjunction with the text.
 2) Roads are for reference purposes only.
 3) This map may not depict all relevant features. The absence of a feature on this map shall not be construed as evidence that a feature does not exist on the landscape. Site-specific investigation may be required.
 4) *Adopted by Regional Council, as Amended - May 2023.*

Sources:
 1) Oak Ridges Moraine Data: Ministry of Municipal Affairs and Housing, 2006.
 2) Aquifer Vulnerability: Ministry of The Environment, 1:130,000.

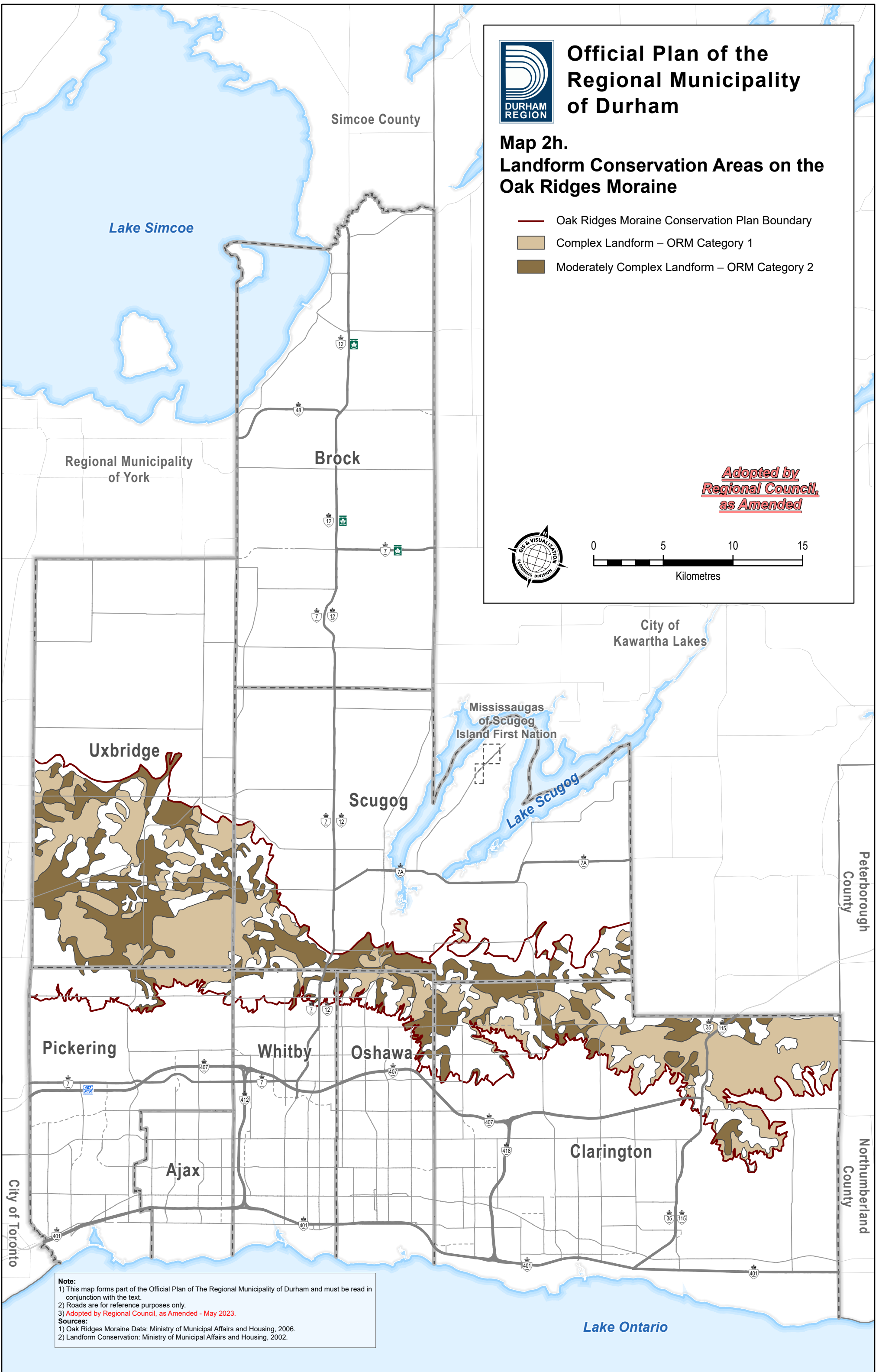


Official Plan of the Regional Municipality of Durham

Map 2h. Landform Conservation Areas on the Oak Ridges Moraine

-  Oak Ridges Moraine Conservation Plan Boundary
-  Complex Landform – ORM Category 1
-  Moderately Complex Landform – ORM Category 2

*Adopted by
Regional Council,
as Amended*



Note:
 1) This map forms part of the Official Plan of The Regional Municipality of Durham and must be read in conjunction with the text.
 2) Roads are for reference purposes only.
 3) *Adopted by Regional Council, as Amended - May 2023.*
Sources:
 1) Oak Ridges Moraine Data: Ministry of Municipal Affairs and Housing, 2006.
 2) Landform Conservation: Ministry of Municipal Affairs and Housing, 2002.