

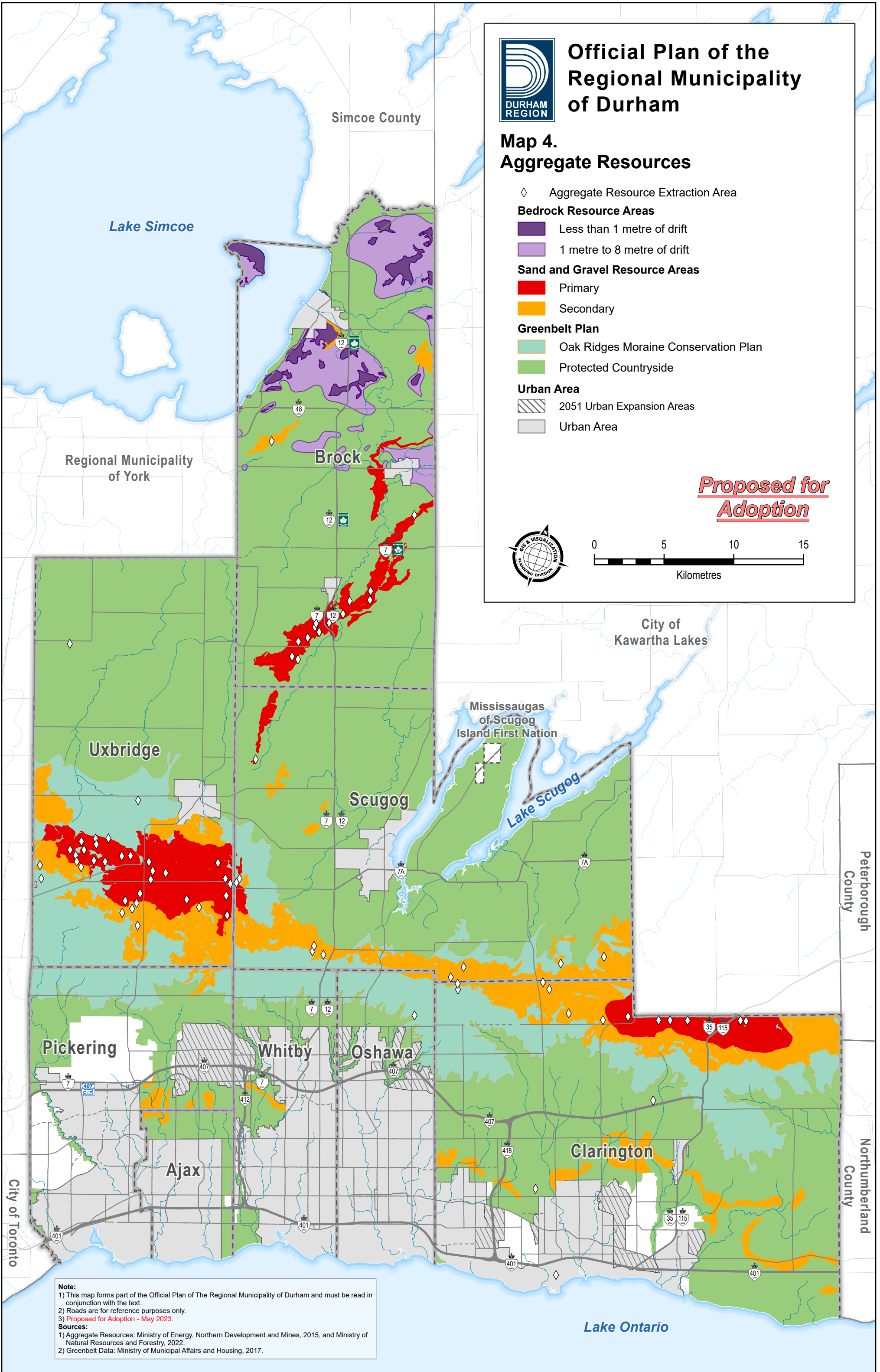


# Official Plan of the Regional Municipality of Durham

## Map 4. Aggregate Resources

- ◇ Aggregate Resource Extraction Area
- Bedrock Resource Areas**
  - Less than 1 metre of drift
  - 1 metre to 8 metre of drift
- Sand and Gravel Resource Areas**
  - Primary
  - Secondary
- Greenbelt Plan**
  - Oak Ridges Moraine Conservation Plan
  - Protected Countryside
- Urban Area**
  - ▨ 2051 Urban Expansion Areas
  - Urban Area

***Proposed for Adoption***



**Note:**  
 1) This map forms part of the Official Plan of The Regional Municipality of Durham and must be read in conjunction with the text.  
 2) Roads are for reference purposes only.  
 3) *Proposed for Adoption - May 2023.*

**Sources:**  
 1) Aggregate Resources: Ministry of Energy, Northern Development and Mines, 2015, and Ministry of Natural Resources and Forestry, 2022.  
 2) Greenbelt Data: Ministry of Municipal Affairs and Housing, 2017.