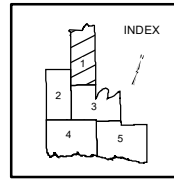




**OFFICIAL PLAN OF THE
REGIONAL MUNICIPALITY
OF DURHAM**



**SCHEDULE 'A' - MAP 'A1'
REGIONAL STRUCTURE**

LEGEND

URBAN SYSTEM

- URBAN AREA BOUNDARY
- REGIONAL CENTRE
- * URBAN GROWTH CENTRE
- REGIONAL CORRIDOR
- LIVING AREAS
- EMPLOYMENT AREAS
- S MUNICIPAL SERVICE
- ▨ AREAS DEVELOPABLE ON FULL/PARTIAL MUNICIPAL SERVICES
- ▨ AREAS DEVELOPABLE ON MUNICIPAL WATER SYSTEMS & PRIVATE WASTE DISPOSAL SYSTEMS
- ▨ AREAS DEVELOPABLE ON PRIVATE WELLS & MUNICIPAL SEWER SYSTEMS
- ▨ AREAS DEVELOPABLE ON PRIVATE WELLS & PRIVATE WASTE DISPOSAL SYSTEMS
- BUILT BOUNDARY

RURAL SYSTEM

- PRIME AGRICULTURAL AREAS

RURAL SETTLEMENTS :

- HAMLET
- ③ RURAL EMPLOYMENT AREA (SEE TABLE E3 FOR DESCRIPTION)
- ⑫ COUNTRY RESIDENTIAL SUBDIVISION (SEE TABLE E2 FOR DESCRIPTION)
- SHORELINE RESIDENTIAL
- ▲ REGIONAL NODE (SEE SECTION 9C FOR DESCRIPTION)
- ⑫ AGGREGATE RESOURCE EXTRACTION AREA (SEE TABLE E1 FOR DESCRIPTION)

GREENLANDS SYSTEM

- MAJOR OPEN SPACE AREAS
- WATERFRONT AREAS
- OAK RIDGES MORaine BOUNDARY
- ▲ TOURIST ACTIVITY / RECREATIONAL NODE
- OPEN SPACE LINKAGE
- OAK RIDGES MORaine AREAS
- GREENBELT BOUNDARY
- ▲ WATERFRONT PLACE
- WATERFRONT LINKS

TRANSPORTATION SYSTEM

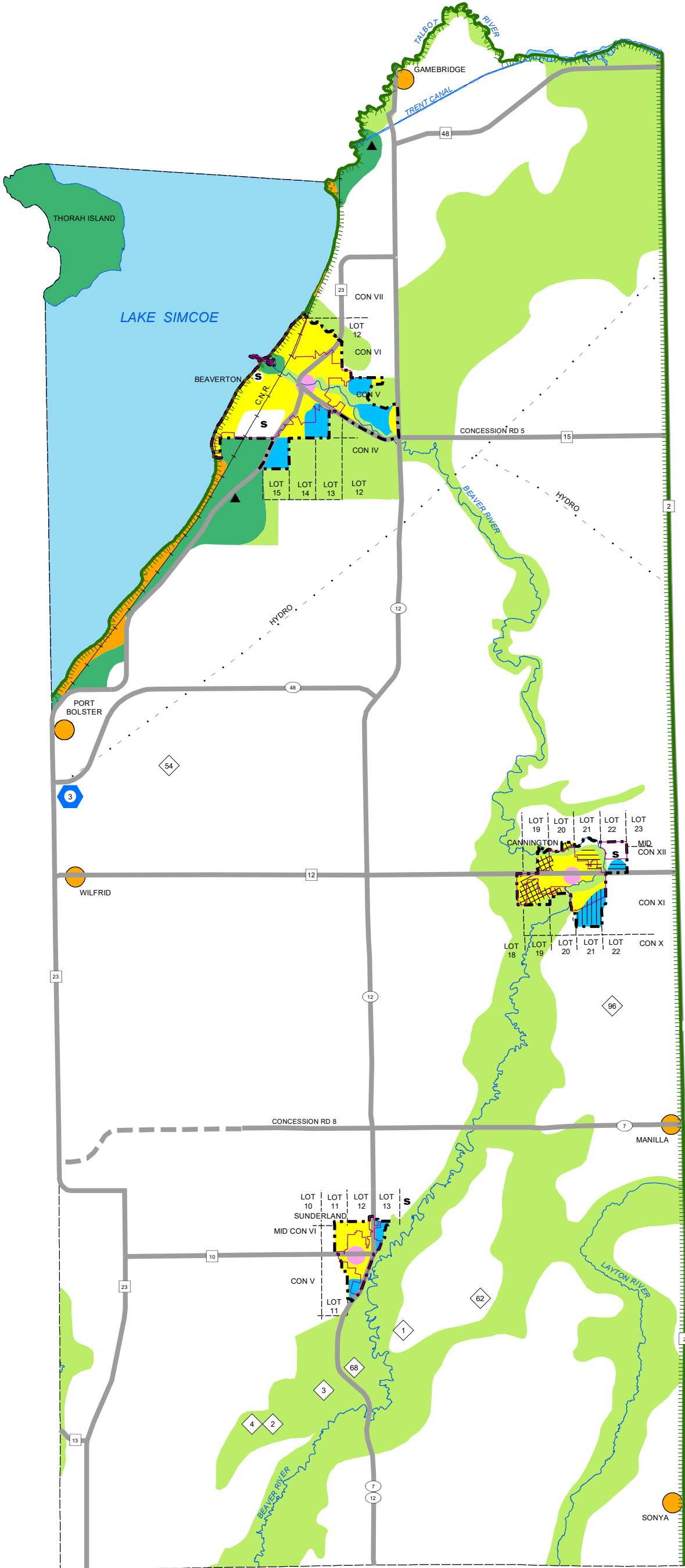
SEE SCHEDULE C FOR DESIGNATIONS

THE FOLLOWING IS SHOWN SELECTIVELY, FOR EASE OF INTERPRETATION OF OTHER DESIGNATIONS ONLY.

- | EXISTING | | FUTURE |
|----------|---------------|--------|
| ▬ | ARTERIAL ROAD | ▬ |
| ▬ | FREEWAY | ▬ |
| ▬ | INTERCHANGE | ▬ |
| ▬ | GO RAIL | ▬ |
| ● | GO STATION | ● |

SPECIAL AREAS

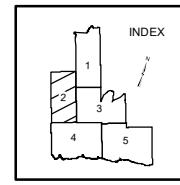
- ② SPECIAL STUDY AREA
- D2 DEFERRED BY MINISTER OF MUNICIPAL AFFAIRS
- SPECIFIC POLICY AREA
- APPEALED TO O.M.B.
- LANDS APPEALED TO OMB, REFER TO POLICY 14.13.7



NOTES:
 1) THIS MAP FORMS PART OF THE OFFICIAL PLAN OF THE REGIONAL MUNICIPALITY OF DURHAM AND MUST BE READ IN CONJUNCTION WITH THE TEXT.
 2) THE DESIGNATIONS FOR THE DEFERRED AREA REFLECT THE POSITION OF REGIONAL COUNCIL, PLEASE REFER TO POLICY 15.13.
 3) OFFICE CONSOLIDATION - MAY 26, 2020.
SOURCES:
 1) OAK RIDGES MORaine BOUNDARY, MINISTRY OF MUNICIPAL AFFAIRS & HOUSING, 2002, 1:100,000.
 2) GREENBELT PLAN: © QUEEN'S PRINTER FOR ONTARIO, 2005. REPRODUCED WITH PERMISSION.
 3) BUILT BOUNDARY: © QUEEN'S PRINTER FOR ONTARIO, 2008. REPRODUCED WITH PERMISSION.



**OFFICIAL PLAN OF THE
REGIONAL MUNICIPALITY
OF DURHAM**



**SCHEDULE 'A' - MAP 'A2'
REGIONAL STRUCTURE**

LEGEND

URBAN SYSTEM

- URBAN AREA BOUNDARY
- REGIONAL CENTRE
- * URBAN GROWTH CENTRE
- REGIONAL CORRIDOR
- LIVING AREAS
- EMPLOYMENT AREAS
- S MUNICIPAL SERVICE
- ▨ AREAS DEVELOPABLE ON FULL/PARTIAL MUNICIPAL SERVICES
- ▨ AREAS DEVELOPABLE ON MUNICIPAL WATER SYSTEMS & PRIVATE WASTE DISPOSAL SYSTEMS
- ▨ AREAS DEVELOPABLE ON PRIVATE WELLS & MUNICIPAL SEWER SYSTEMS
- ▨ AREAS DEVELOPABLE ON PRIVATE WELLS & PRIVATE WASTE DISPOSAL SYSTEMS
- BUILT BOUNDARY

RURAL SYSTEM

- PRIME AGRICULTURAL AREAS

RURAL SETTLEMENTS :

- HAMLET
- ③ RURAL EMPLOYMENT AREA (SEE TABLE E3 FOR DESCRIPTION)
- ⑫ COUNTRY RESIDENTIAL SUBDIVISION (SEE TABLE E2 FOR DESCRIPTION)
- SHORELINE RESIDENTIAL
- ▲ REGIONAL NODE (SEE SECTION 9C FOR DESCRIPTION)
- ⑫ AGGREGATE RESOURCE EXTRACTION AREA (SEE TABLE E1 FOR DESCRIPTION)

GREENLANDS SYSTEM

- MAJOR OPEN SPACE AREAS
- WATERFRONT AREAS
- OAK RIDGES MORaine BOUNDARY
- ▲ TOURIST ACTIVITY / RECREATIONAL NODE
- OPEN SPACE LINKAGE
- OAK RIDGES MORaine AREAS
- GREENBELT BOUNDARY
- ▲ WATERFRONT PLACE
- WATERFRONT LINKS

TRANSPORTATION SYSTEM

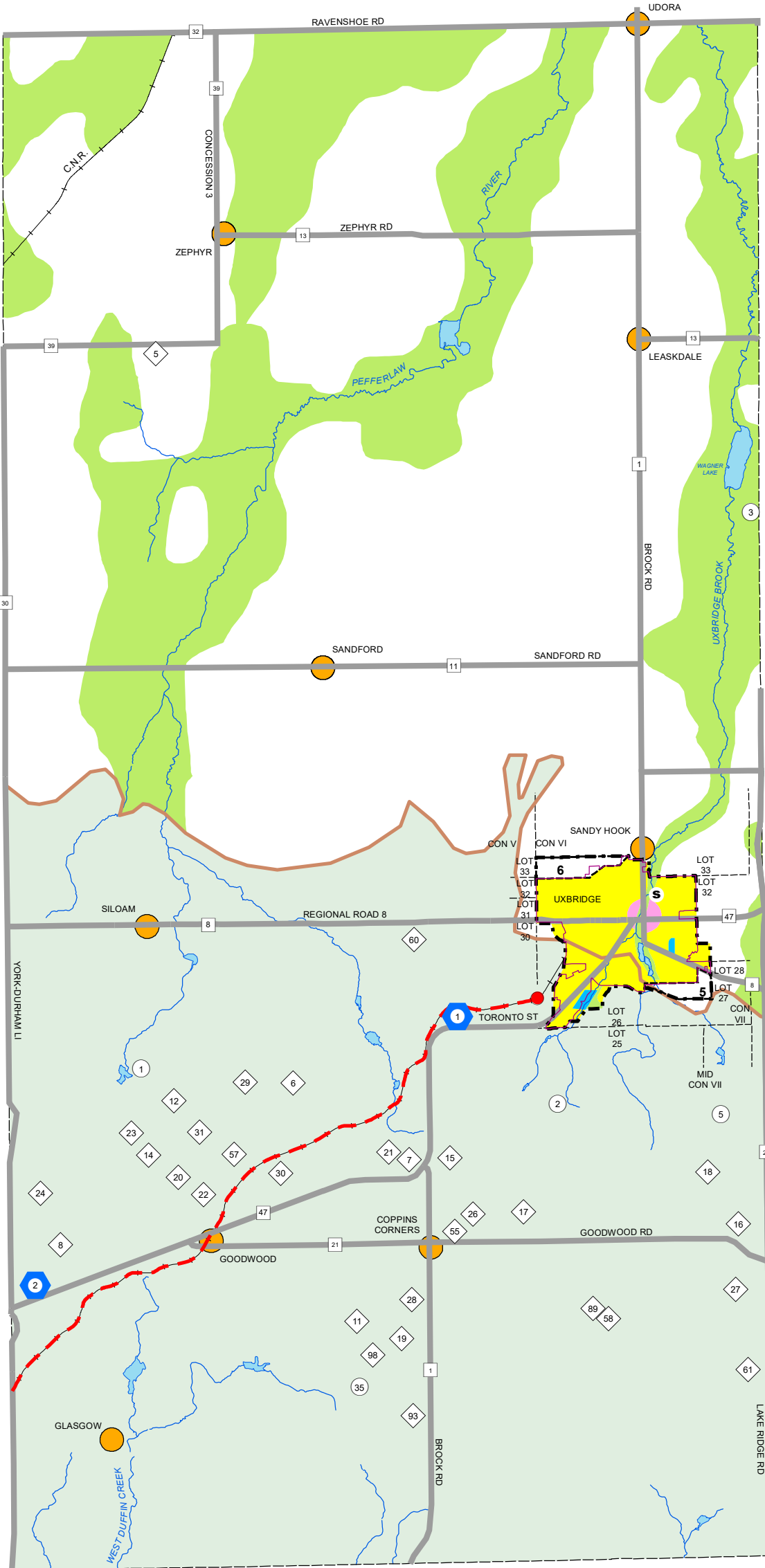
SEE SCHEDULE C FOR DESIGNATIONS

THE FOLLOWING IS SHOWN SELECTIVELY, FOR EASE OF INTERPRETATION OF OTHER DESIGNATIONS ONLY.

- | EXISTING | | FUTURE |
|----------|---------------|--------|
| ▬ | ARTERIAL ROAD | ▬ |
| ▬▬ | FREEWAY | ▬▬ |
| ▬▬ | INTERCHANGE | ▬▬ |
| ▬ | GO RAIL | ▬ |
| ● | GO STATION | ● |

SPECIAL AREAS

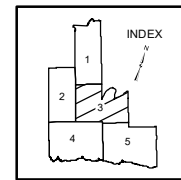
- ② SPECIAL STUDY AREA
- D2 DEFERRED BY MINISTER OF MUNICIPAL AFFAIRS
- SPECIFIC POLICY AREA
- APPEALED TO O.M.B.
- LANDS APPEALED TO OMB, REFER TO POLICY 14.13.7



NOTES:
 1) THIS MAP FORMS PART OF THE OFFICIAL PLAN OF THE REGIONAL MUNICIPALITY OF DURHAM AND MUST BE READ IN CONJUNCTION WITH THE TEXT.
 2) THE DESIGNATIONS FOR THE DEFERRED AREA REFLECT THE POSITION OF REGIONAL COUNCIL. PLEASE REFER TO POLICY 15.13.
 3) OFFICE CONSOLIDATION - MAY 26, 2020.
SOURCES:
 1) OAK RIDGES MORaine: BOUNDARY, MINISTRY OF MUNICIPAL AFFAIRS & HOUSING, 2002, 1:100,000.
 2) GREENBELT PLAN: © QUEEN'S PRINTER FOR ONTARIO, 2005. REPRODUCED WITH PERMISSION.
 3) DELINEATED BUILT BOUNDARY: © QUEEN'S PRINTER FOR ONTARIO, 2008. REPRODUCED WITH PERMISSION.



**OFFICIAL PLAN OF THE
REGIONAL MUNICIPALITY
OF DURHAM**



**SCHEDULE 'A' - MAP 'A3'
REGIONAL STRUCTURE**

LEGEND

URBAN SYSTEM

- URBAN AREA BOUNDARY
- URBAN GROWTH CENTRE
- LIVING AREAS
- AREAS DEVELOPABLE ON FULL/PARTIAL MUNICIPAL SERVICES
- AREAS DEVELOPABLE ON PRIVATE WELLS & MUNICIPAL SEWER SYSTEMS
- MUNICIPAL SERVICE
- REGIONAL CENTRE
- REGIONAL CORRIDOR
- EMPLOYMENT AREAS
- AREAS DEVELOPABLE ON MUNICIPAL WATER SYSTEMS & PRIVATE WASTE DISPOSAL SYSTEMS
- AREAS DEVELOPABLE ON PRIVATE WELLS & PRIVATE WASTE DISPOSAL SYSTEMS
- BUILT BOUNDARY

RURAL SYSTEM

- PRIME AGRICULTURAL AREAS
- HAMLET
- RURAL EMPLOYMENT AREA (SEE TABLE E3 FOR DESCRIPTION)
- REGIONAL NODE (SEE SECTION 9C FOR DESCRIPTION)
- AGGREGATE RESOURCE EXTRACTION AREA (SEE TABLE E1 FOR DESCRIPTION)
- COUNTRY RESIDENTIAL SUBDIVISION (SEE TABLE E2 FOR DESCRIPTION)
- SHORELINE RESIDENTIAL

GREENLANDS SYSTEM

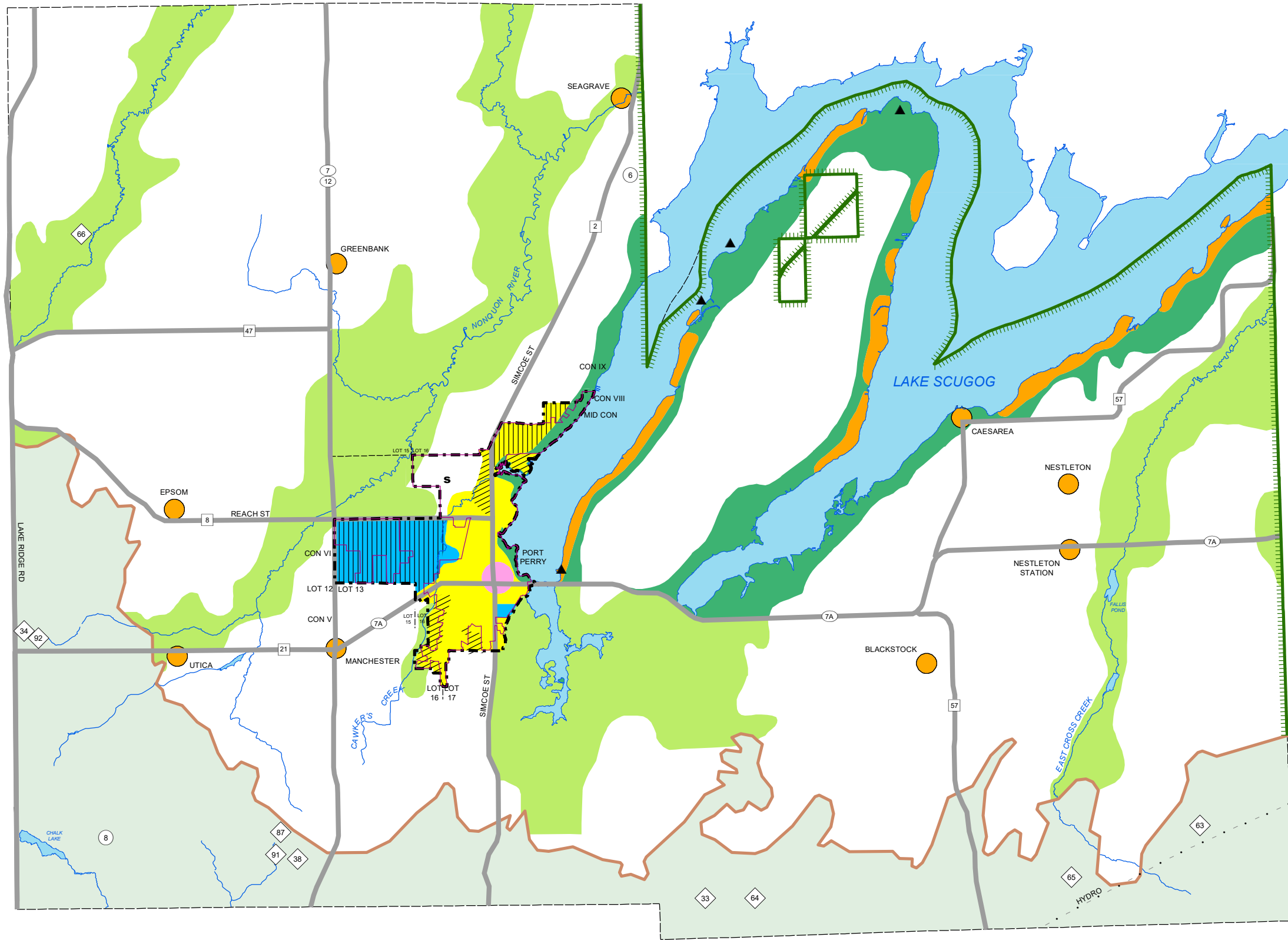
- MAJOR OPEN SPACE AREAS
- WATERFRONT AREAS
- OAK RIDGES MORaine BOUNDARY
- TOURIST ACTIVITY/ RECREATIONAL NODE
- OPEN SPACE LINKAGE
- OAK RIDGES MORaine AREAS
- GREENBELT BOUNDARY
- WATERFRONT PLACE
- WATERFRONT LINKS

TRANSPORTATION SYSTEM

- SEE SCHEDULE C FOR DESIGNATIONS
- THE FOLLOWING IS SHOWN SELECTIVELY, FOR EASE OF INTERPRETATION OF OTHER DESIGNATIONS ONLY.
- | | |
|------------------------|----------------------|
| EXISTING ARTERIAL ROAD | FUTURE ARTERIAL ROAD |
| EXISTING FREEWAY | FUTURE FREEWAY |
| EXISTING INTERCHANGE | FUTURE INTERCHANGE |
| EXISTING GO RAIL | FUTURE GO RAIL |
| EXISTING GO STATION | FUTURE GO STATION |

SPECIAL AREAS

- SPECIAL STUDY AREA
- DEFERRED BY MINISTER OF MUNICIPAL AFFAIRS
- SPECIFIC POLICY AREA
- APPEALED TO O.M.B.
- LANDS APPEALED TO OMB, REFER TO POLICY 14.13.7



NOTES:

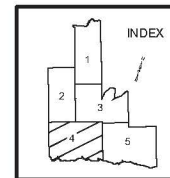
- 1) THIS MAP FORMS PART OF THE OFFICIAL PLAN OF THE REGIONAL MUNICIPALITY OF DURHAM AND MUST BE READ IN CONJUNCTION WITH THE TEXT.
- 2) THE DESIGNATIONS FOR THE DEFERRED AREA REFLECT THE POSITION OF REGIONAL COUNCIL. PLEASE REFER TO POLICY 15.13.
- 3) OFFICE CONSOLIDATION - MAY 26, 2020.

SOURCES:

- 1) OAK RIDGES MORaine: BOUNDARY, MINISTRY OF MUNICIPAL AFFAIRS & HOUSING, 2002. 1:100,000.
- 2) GREENBELT PLAN: © QUEEN'S PRINTER FOR ONTARIO, 2005. REPRODUCED WITH PERMISSION.
- 3) DELINEATED BUILT BOUNDARY: © QUEEN'S PRINTER FOR ONTARIO, 2008. REPRODUCED WITH PERMISSION.



**OFFICIAL PLAN OF THE
REGIONAL MUNICIPALITY
OF DURHAM**



**SCHEDULE 'A' - MAP 'A4'
REGIONAL STRUCTURE**

LEGEND

URBAN SYSTEM

- URBAN AREA BOUNDARY
- URBAN GROWTH CENTRE
- LIVING AREAS
- AREAS DEVELOPABLE ON FULL/PARTIAL MUNICIPAL SERVICES
- AREAS DEVELOPABLE ON PRIVATE WELLS & MUNICIPAL SEWER SYSTEMS
- MUNICIPAL SERVICE
- REGIONAL CENTRE
- REGIONAL CORRIDOR
- EMPLOYMENT AREAS
- AREAS DEVELOPABLE ON MUNICIPAL WATER SYSTEMS & PRIVATE WASTE DISPOSAL SYSTEMS
- AREAS DEVELOPABLE ON PRIVATE WELLS & PRIVATE WASTE DISPOSAL SYSTEMS
- BUILT BOUNDARY

RURAL SYSTEM

- PRIME AGRICULTURAL AREAS
- HAMLET
- RURAL EMPLOYMENT AREA (SEE TABLE E3 FOR DESCRIPTION)
- REGIONAL NODE (SEE SECTION 9C FOR DESCRIPTION)
- AGGREGATE RESOURCE EXTRACTION AREA (SEE TABLE E1 FOR DESCRIPTION)
- COUNTRY RESIDENTIAL SUBDIVISION (SEE TABLE E2 FOR DESCRIPTION)
- SHORELINE RESIDENTIAL

GREENLANDS SYSTEM

- MAJOR OPEN SPACE AREAS
- WATERFRONT AREAS
- OAK RIDGES MORaine BOUNDARY
- TOURIST ACTIVITY/ RECREATIONAL NODE
- OPEN SPACE LINKAGE
- OAK RIDGES MORaine AREAS
- GREENBELT BOUNDARY
- WATERFRONT PLACE
- WATERFRONT LINKS

TRANSPORTATION SYSTEM

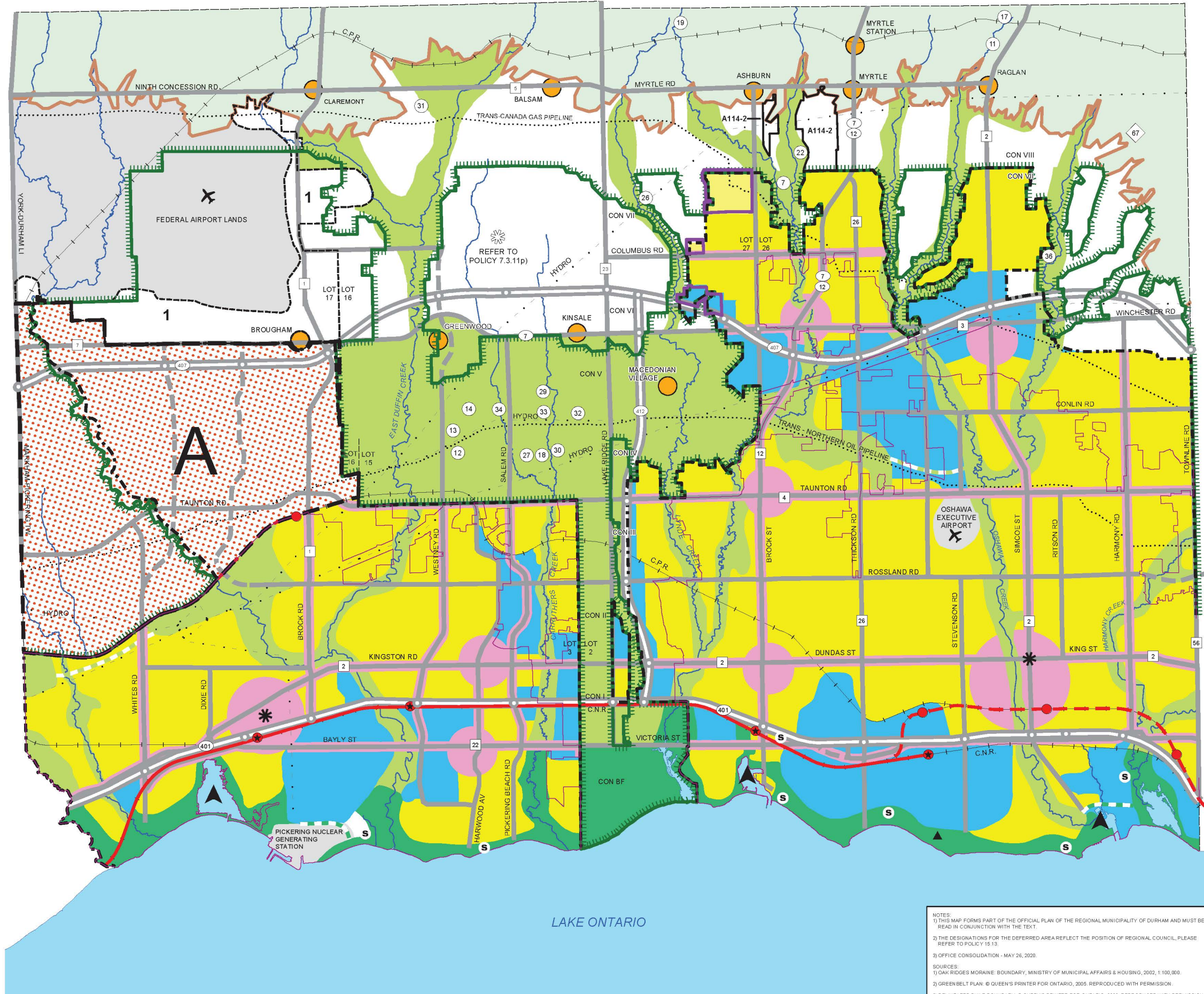
SEE SCHEDULE C FOR DESIGNATIONS

THE FOLLOWING IS SHOWN SELECTIVELY, FOR EASE OF INTERPRETATION OF OTHER DESIGNATIONS ONLY.

- | EXISTING | | FUTURE |
|----------|---------------|--------|
| | ARTERIAL ROAD | |
| | FREEWAY | |
| | INTERCHANGE | |
| | GO RAIL | |
| | GO STATION | |

SPECIAL AREAS

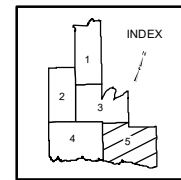
- SPECIAL STUDY AREA
- DEFERRED BY MINISTER OF MUNICIPAL AFFAIRS
- REFER TO POLICY 7.3.11p)
- SPECIFIC POLICY AREA
- APPEALED TO O.M.B.
- LANDS APPEALED TO OMB, REFER TO POLICY 14.13.7



NOTES:
 1) THIS MAP FORMS PART OF THE OFFICIAL PLAN OF THE REGIONAL MUNICIPALITY OF DURHAM AND MUST BE READ IN CONJUNCTION WITH THE TEXT.
 2) THE DESIGNATIONS FOR THE DEFERRED AREA REFLECT THE POSITION OF REGIONAL COUNCIL, PLEASE REFER TO POLICY 15.13.
 3) OFFICE CONSOLIDATION - MAY 26, 2020.
SOURCES:
 1) OAK RIDGES MORaine: BOUNDARY, MINISTRY OF MUNICIPAL AFFAIRS & HOUSING, 2002, 1:100,000.
 2) GREENBELT PLAN: © QUEEN'S PRINTER FOR ONTARIO, 2005. REPRODUCED WITH PERMISSION.
 3) DELINEATED BUILT BOUNDARY: © QUEEN'S PRINTER FOR ONTARIO, 2008. REPRODUCED WITH PERMISSION.



**OFFICIAL PLAN OF THE
REGIONAL MUNICIPALITY
OF DURHAM**



**SCHEDULE 'A' - MAP 'A5'
REGIONAL STRUCTURE**

LEGEND

URBAN SYSTEM

- URBAN AREA BOUNDARY
- URBAN AREA BOUNDARY DEFERRED
- URBAN GROWTH CENTRE
- LIVING AREAS
- AREAS DEVELOPABLE ON FULL/PARTIAL MUNICIPAL SERVICES
- AREAS DEVELOPABLE ON PRIVATE WELLS & MUNICIPAL SEWER SYSTEMS
- BUILT BOUNDARY
- MUNICIPAL SERVICE
- URBAN AREA BOUNDARY DEFERRED
- REGIONAL CENTRE
- REGIONAL CORRIDOR
- EMPLOYMENT AREAS
- AREAS DEVELOPABLE ON MUNICIPAL WATER SYSTEMS & PRIVATE WASTE DISPOSAL SYSTEMS
- AREAS DEVELOPABLE ON PRIVATE WELLS & PRIVATE WASTE DISPOSAL SYSTEMS

RURAL SYSTEM

- PRIME AGRICULTURAL AREAS

RURAL SETTLEMENTS :

- HAMLET
- RURAL EMPLOYMENT AREA (SEE TABLE E3 FOR DESCRIPTION)
- REGIONAL NODE (SEE SECTION 9C FOR DESCRIPTION)
- AGGREGATE RESOURCE EXTRACTION AREA (SEE TABLE E1 FOR DESCRIPTION)
- COUNTRY RESIDENTIAL SUBDIVISION (SEE TABLE E2 FOR DESCRIPTION)
- SHORELINE RESIDENTIAL

GREENLANDS SYSTEM

- MAJOR OPEN SPACE AREAS
- WATERFRONT AREAS
- OAK RIDGES MORAINÉ BOUNDARY
- TOURIST ACTIVITY/ RECREATIONAL NODE
- OPEN SPACE LINKAGE
- OAK RIDGES MORAINÉ AREAS
- GREENBELT BOUNDARY
- WATERFRONT PLACE
- WATERFRONT LINKS

TRANSPORTATION SYSTEM

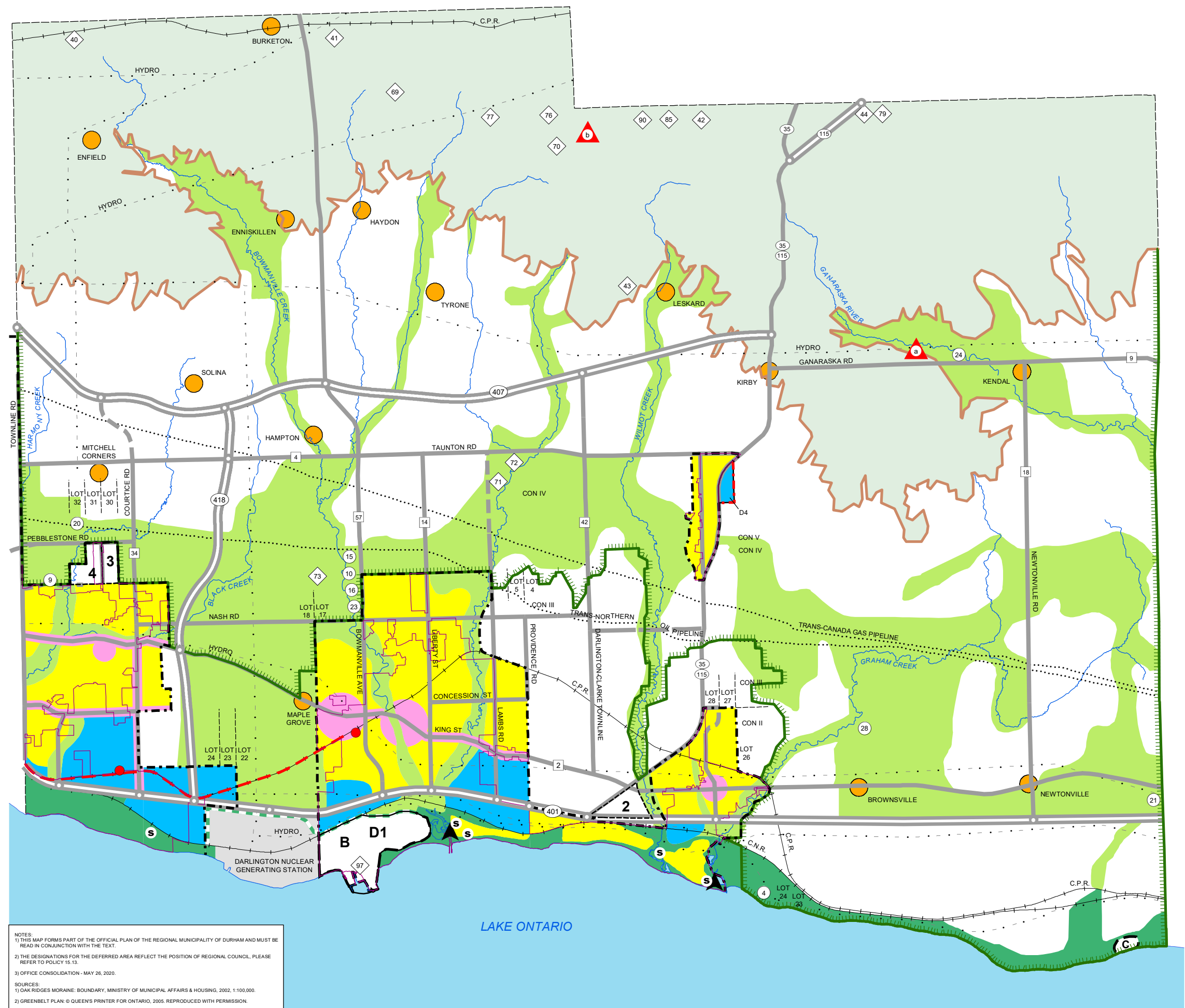
SEE SCHEDULE C FOR DESIGNATIONS

THE FOLLOWING IS SHOWN SELECTIVELY, FOR EASE OF INTERPRETATION OF OTHER DESIGNATIONS ONLY.

EXISTING		FUTURE
	ARTERIAL ROAD	
	FREEWAY	
	INTERCHANGE	
	GO RAIL	
	GO STATION	

SPECIAL AREAS

- SPECIAL STUDY AREA
- DEFERRED BY MINISTER OF MUNICIPAL AFFAIRS
- SPECIFIC POLICY AREA
- APPEALED TO O.M.B.
- LANDS APPEALED TO OMB, REFER TO POLICY 14.13.7



NOTES:
 1) THIS MAP FORMS PART OF THE OFFICIAL PLAN OF THE REGIONAL MUNICIPALITY OF DURHAM AND MUST BE READ IN CONJUNCTION WITH THE TEXT.
 2) THE DESIGNATIONS FOR THE DEFERRED AREA REFLECT THE POSITION OF REGIONAL COUNCIL, PLEASE REFER TO POLICY 15.13.
 3) OFFICE CONSOLIDATION - MAY 26, 2020.
SOURCES:
 1) OAK RIDGES MORAINÉ BOUNDARY, MINISTRY OF MUNICIPAL AFFAIRS & HOUSING, 2002, 1:100,000.
 2) GREENBELT PLAN © QUEEN'S PRINTER FOR ONTARIO, 2005. REPRODUCED WITH PERMISSION.