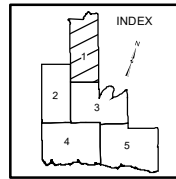










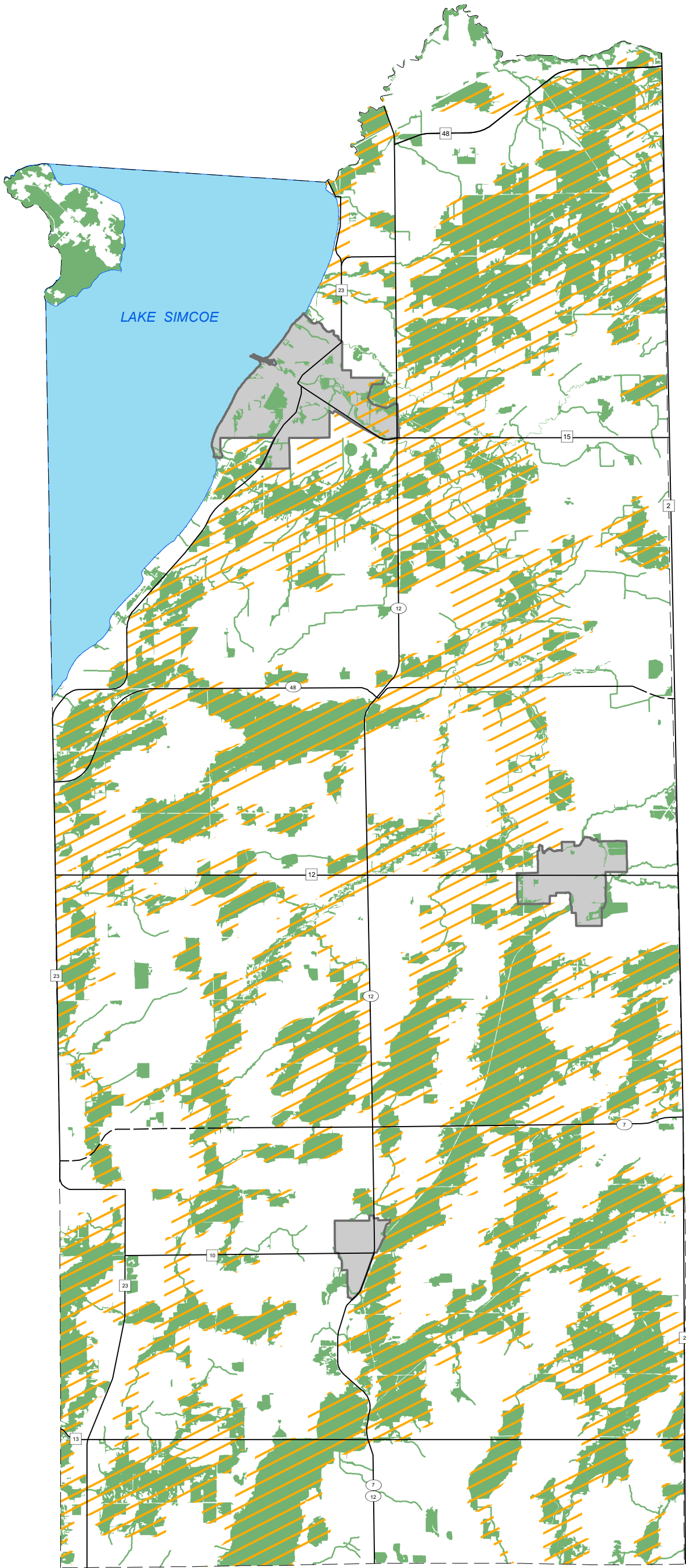
**OFFICIAL PLAN OF THE
REGIONAL MUNICIPALITY
OF DURHAM**



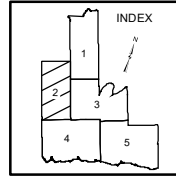
**SCHEDULE 'B' - MAP 'B1a'
GREENBELT NATURAL
HERITAGE SYSTEM &
KEY NATURAL HERITAGE
AND HYDROLOGIC
FEATURES**

LEGEND

-  KEY NATURAL HERITAGE AND HYDROLOGIC FEATURES
-  GREENBELT NATURAL HERITAGE SYSTEM
-  OAK RIDGES MORaine CONSERVATION PLAN AREA BOUNDARY
-  URBAN AREA
-  LANDS APPEALED TO OMB,
REFER TO POLICY 14.13.7.
-  SPECIFIC POLICY AREA









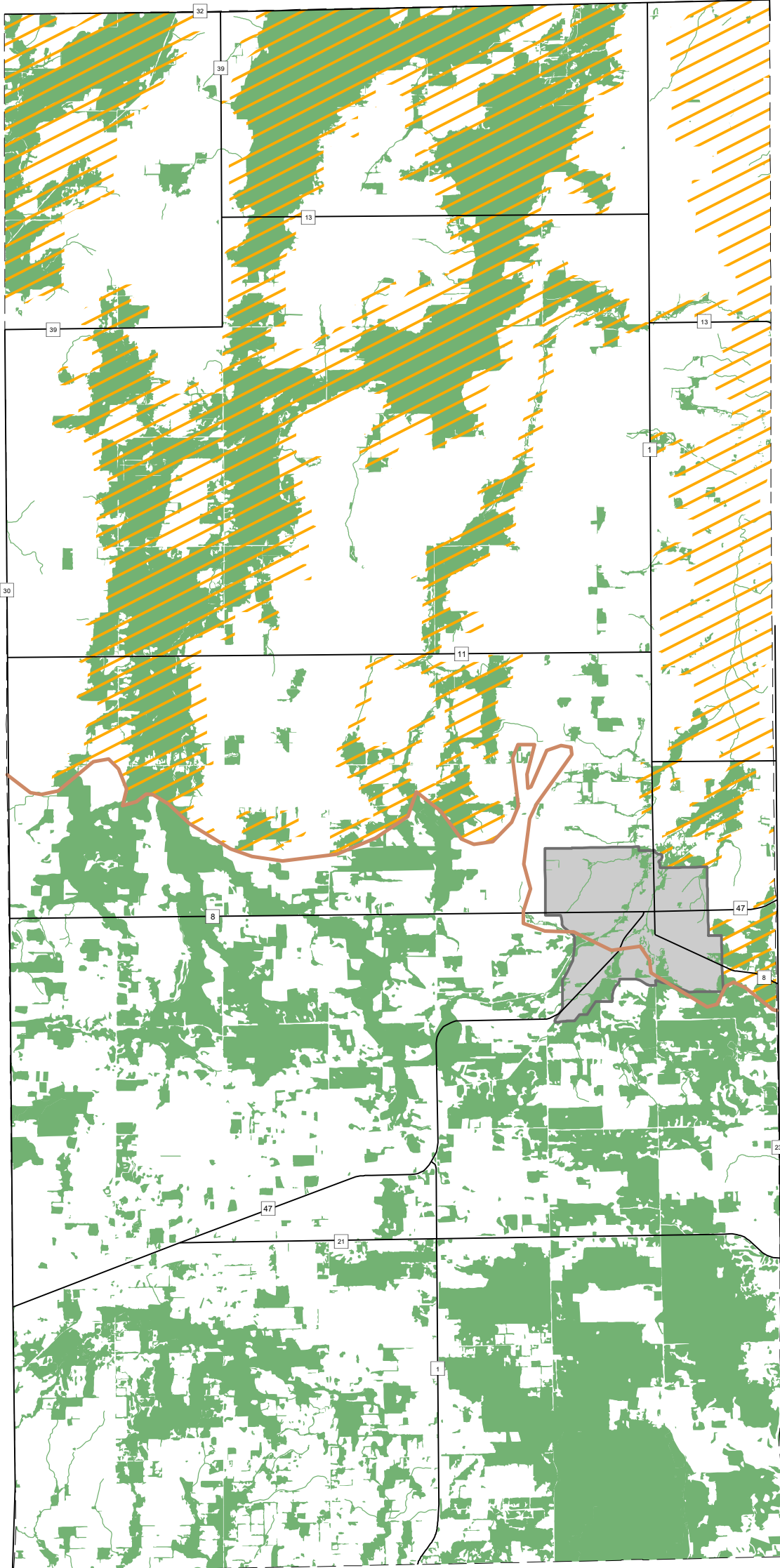
NOTES:
 1) THIS MAP FORMS PART OF THE OFFICIAL PLAN OF THE REGIONAL MUNICIPALITY OF DURHAM AND MUST BE READ IN CONJUNCTION WITH THE TEXT.
 2) ROADS ARE FOR REFERENCE PURPOSES ONLY.
 3) OFFICE CONSOLIDATION - MAY 26, 2020.
SOURCES:
 1) OAK RIDGES MORaine: BOUNDARY, MINISTRY OF MUNICIPAL AFFAIRS & HOUSING, 2002, 1:100,000.
 2) NATURAL HERITAGE FEATURES: MINISTRY OF NATURAL RESOURCES, 1:10,000.
 3) CONSERVATION AUTHORITIES.
 4) GREENBELT PLAN: © QUEEN'S PRINTER FOR ONTARIO, 2005. REPRODUCED WITH PERMISSION.



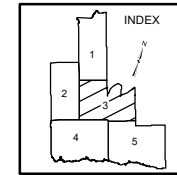
**SCHEDULE 'B' - MAP 'B1b'
GREENBELT NATURAL
HERITAGE SYSTEM &
KEY NATURAL HERITAGE
AND HYDROLOGIC
FEATURES**

LEGEND

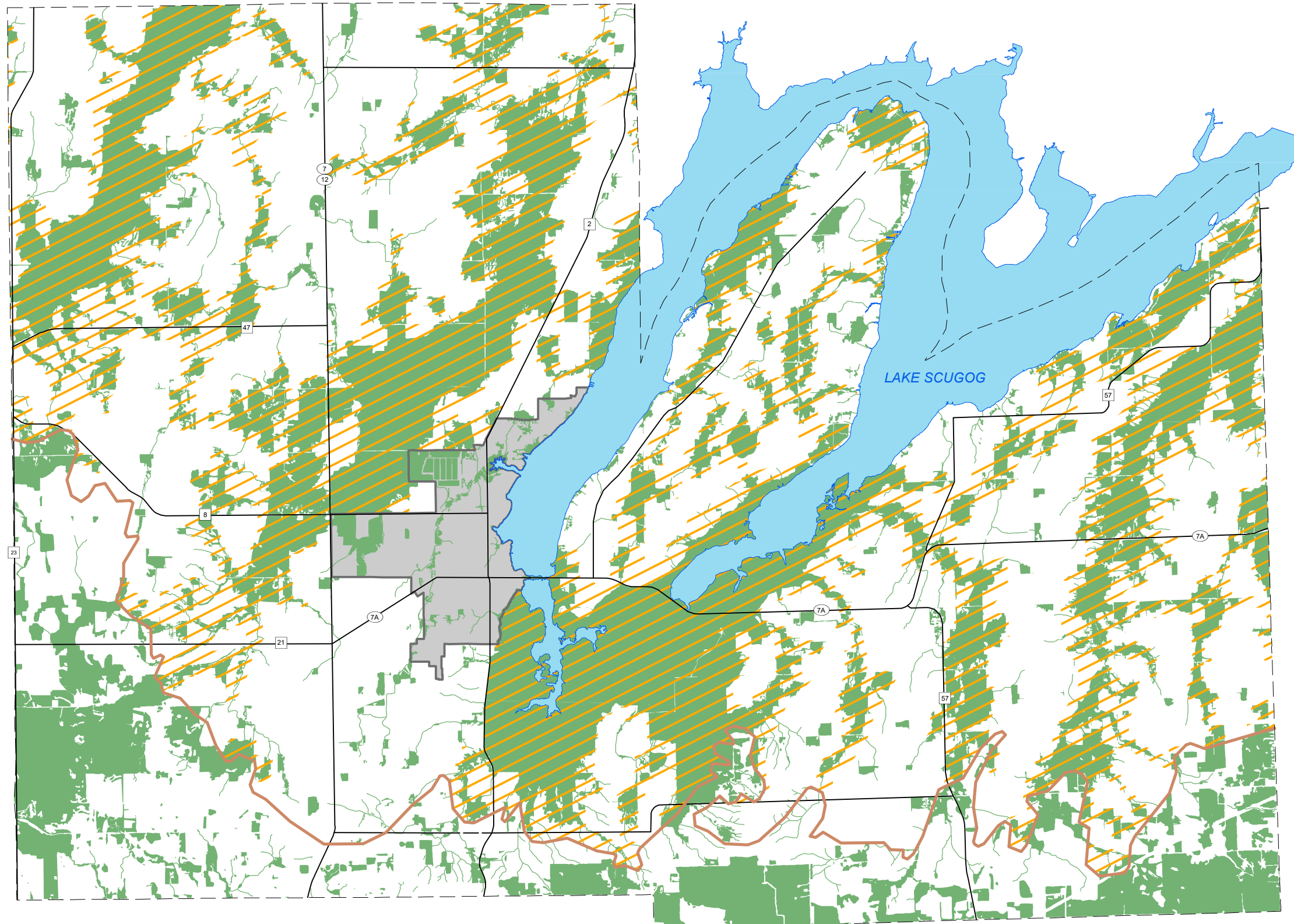
-  KEY NATURAL HERITAGE AND HYDROLOGIC FEATURES
-  GREENBELT NATURAL HERITAGE SYSTEM
-  OAK RIDGES MORaine CONSERVATION PLAN AREA BOUNDARY
-  URBAN AREA
-  LANDS APPEALED TO OMB, REFER TO POLICY 14.13.7.
-  SPECIFIC POLICY AREA









NOTES:
1) THIS MAP FORMS PART OF THE OFFICIAL PLAN OF THE REGIONAL MUNICIPALITY OF DURHAM AND MUST BE READ IN CONJUNCTION WITH THE TEXT.
2) ROADS ARE FOR REFERENCE PURPOSES ONLY.
3) OFFICE CONSOLIDATION - MAY 26, 2020.
SOURCES:
1) OAK RIDGES MORaine: BOUNDARY, MINISTRY OF MUNICIPAL AFFAIRS & HOUSING, 2002, 1:100,000.
2) NATURAL HERITAGE FEATURES: MINISTRY OF NATURAL RESOURCES, 1:10,000.
3) CONSERVATION AUTHORITIES.
4) GREENBELT PLAN: © QUEEN'S PRINTER FOR ONTARIO, 2005. REPRODUCED WITH PERMISSION.



**SCHEDULE 'B' - MAP 'B1c'
GREENBELT NATURAL
HERITAGE SYSTEM &
KEY NATURAL HERITAGE
AND HYDROLOGIC
FEATURES**

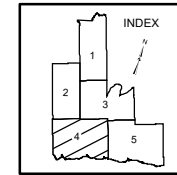


LEGEND

-  KEY NATURAL HERITAGE AND HYDROLOGIC FEATURES
-  GREENBELT NATURAL HERITAGE SYSTEM
-  OAK RIDGES MORAINÉ CONSERVATION PLAN AREA BOUNDARY
-  URBAN AREA
-  LANDS APPEALED TO OMB, REFER TO POLICY 14.13.7.
-  SPECIFIC POLICY AREA







NOTES:
 1) THIS MAP FORMS PART OF THE OFFICIAL PLAN OF THE REGIONAL MUNICIPALITY OF DURHAM AND MUST BE READ IN CONJUNCTION WITH THE TEXT.
 2) ROADS ARE FOR REFERENCE PURPOSES ONLY.
 3) OFFICE CONSOLIDATION - MAY 26, 2020.

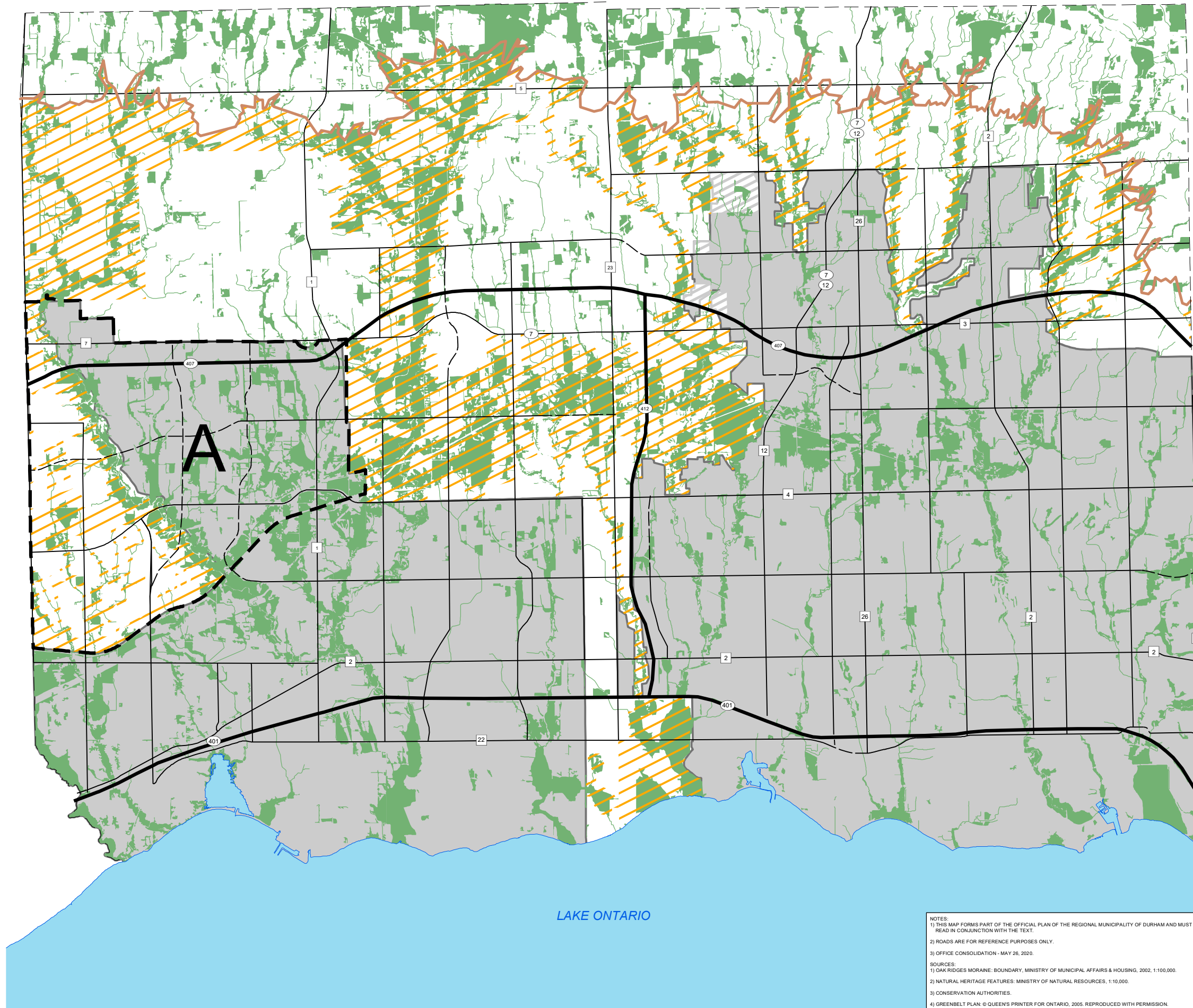
SOURCES:
 1) OAK RIDGES MORAINÉ BOUNDARY, MINISTRY OF MUNICIPAL AFFAIRS & HOUSING, 2002, 1:100,000.
 2) NATURAL HERITAGE FEATURES, MINISTRY OF NATURAL RESOURCES, 1:10,000.
 3) CONSERVATION AUTHORITIES.
 4) GREENBELT PLAN: © QUEEN'S PRINTER FOR ONTARIO, 2005. REPRODUCED WITH PERMISSION.



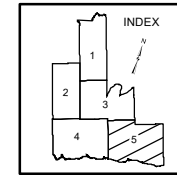
SCHEDULE 'B' - MAP 'B1d'
**GREENBELT NATURAL
HERITAGE SYSTEM &
KEY NATURAL HERITAGE
AND HYDROLOGIC
FEATURES**

LEGEND

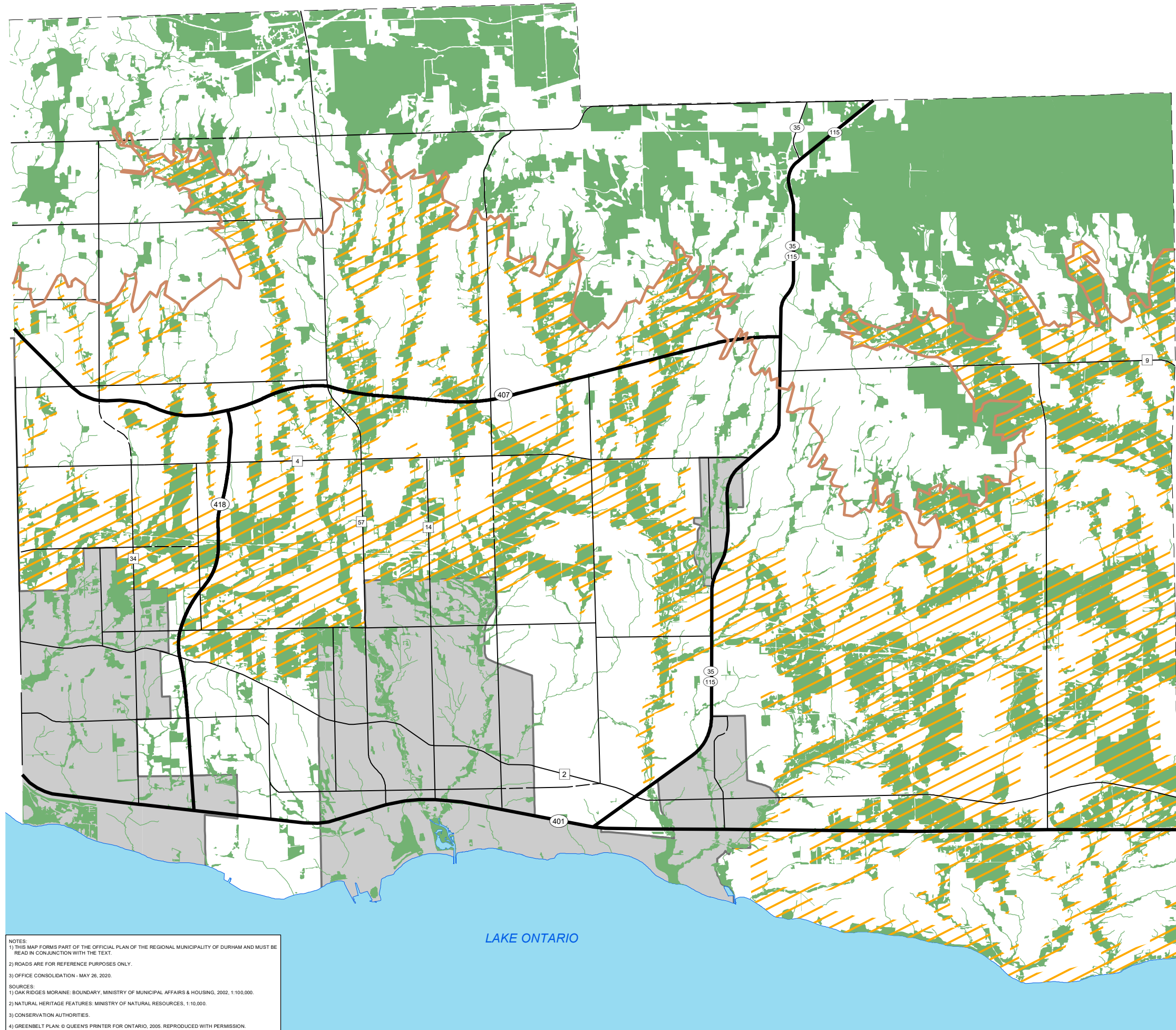
-  KEY NATURAL HERITAGE AND HYDROLOGIC FEATURES
-  GREENBELT NATURAL HERITAGE SYSTEM
-  OAK RIDGES MORAINÉ CONSERVATION PLAN AREA BOUNDARY
-  URBAN AREA
-  LANDS APPEALED TO OMB,
REFER TO POLICY 14.13.7.
-  SPECIFIC POLICY AREA









NOTES:
 1) THIS MAP FORMS PART OF THE OFFICIAL PLAN OF THE REGIONAL MUNICIPALITY OF DURHAM AND MUST BE READ IN CONJUNCTION WITH THE TEXT.
 2) ROADS ARE FOR REFERENCE PURPOSES ONLY.
 3) OFFICE CONSOLIDATION - MAY 26, 2020.
 SOURCES:
 1) OAK RIDGES MORAINÉ BOUNDARY, MINISTRY OF MUNICIPAL AFFAIRS & HOUSING, 2002, 1:100,000.
 2) NATURAL HERITAGE FEATURES: MINISTRY OF NATURAL RESOURCES, 1:10,000.
 3) CONSERVATION AUTHORITIES.
 4) GREENBELT PLAN: © QUEEN'S PRINTER FOR ONTARIO, 2005. REPRODUCED WITH PERMISSION.



SCHEDULE 'B' - MAP 'B1e'
**GREENBELT NATURAL
HERITAGE SYSTEM &
KEY NATURAL HERITAGE
AND HYDROLOGIC
FEATURES**



LEGEND

-  KEY NATURAL HERITAGE AND HYDROLOGIC FEATURES
-  GREENBELT NATURAL HERITAGE SYSTEM
-  OAK RIDGES MORAINÉ CONSERVATION PLAN AREA BOUNDARY
-  URBAN AREA
-  LANDS APPEALED TO OMB, REFER TO POLICY 14.13.7.
-  SPECIFIC POLICY AREA

NOTES:
 1) THIS MAP FORMS PART OF THE OFFICIAL PLAN OF THE REGIONAL MUNICIPALITY OF DURHAM AND MUST BE READ IN CONJUNCTION WITH THE TEXT.
 2) ROADS ARE FOR REFERENCE PURPOSES ONLY.
 3) OFFICE CONSOLIDATION - MAY 26, 2020.
 SOURCES:
 1) OAK RIDGES MORAINÉ BOUNDARY, MINISTRY OF MUNICIPAL AFFAIRS & HOUSING, 2002, 1:100,000.
 2) NATURAL HERITAGE FEATURES, MINISTRY OF NATURAL RESOURCES, 1:10,000.
 3) CONSERVATION AUTHORITIES.
 4) GREENBELT PLAN: © QUEEN'S PRINTER FOR ONTARIO, 2005, REPRODUCED WITH PERMISSION.


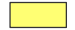



LAKE ONTARIO

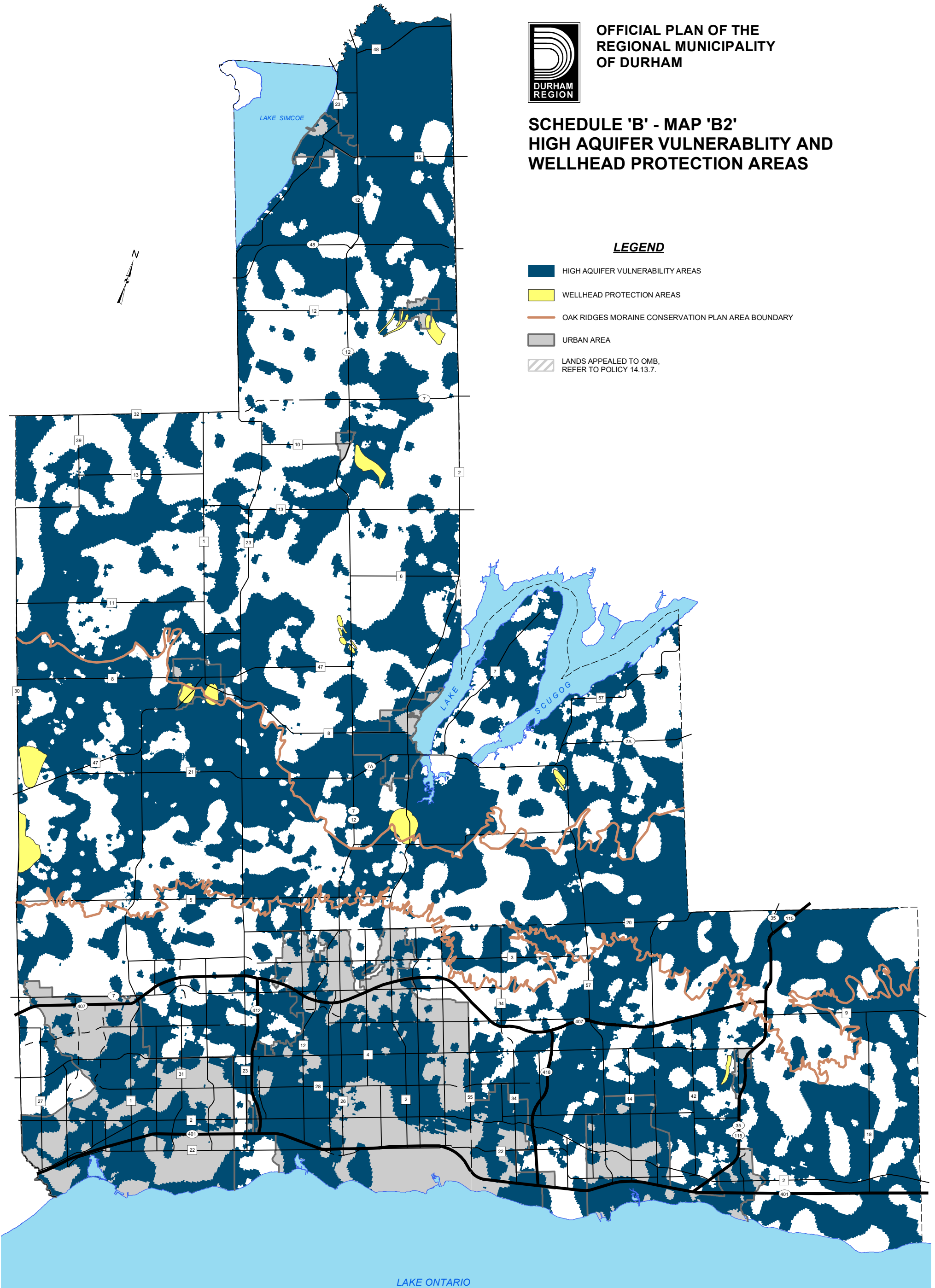


OFFICIAL PLAN OF THE
REGIONAL MUNICIPALITY
OF DURHAM

SCHEDULE 'B' - MAP 'B2'
**HIGH AQUIFER VULNERABILITY AND
WELLHEAD PROTECTION AREAS**

LEGEND

-  HIGH AQUIFER VULNERABILITY AREAS
-  WELLHEAD PROTECTION AREAS
-  OAK RIDGES MORaine CONSERVATION PLAN AREA BOUNDARY
-  URBAN AREA
-  LANDS APPEALED TO OMB,
REFER TO POLICY 14.13.7.

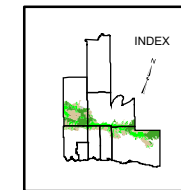


NOTES:
 1) THIS MAP FORMS PART OF THE OFFICIAL PLAN OF THE REGIONAL MUNICIPALITY OF DURHAM AND MUST BE READ IN CONJUNCTION WITH THE TEXT.
 2) THIS MAP SHALL BE UPDATED IN CONSULTATION WITH THE MINISTRY OF THE ENVIRONMENT WHENEVER NEW INFORMATION BECOMES AVAILABLE.
 3) ROADS ARE FOR REFERENCE PURPOSES ONLY.
 4) OFFICE CONSOLIDATION - MAY 26, 2020.

SOURCES:
 1) OAK RIDGES MORaine: BOUNDARY, MINISTRY OF MUNICIPAL AFFAIRS & HOUSING, 2002, 1:100,000.
 2) AQUIFER VULNERABILITY: MINISTRY OF THE ENVIRONMENT, 1:130,000.






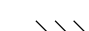
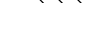




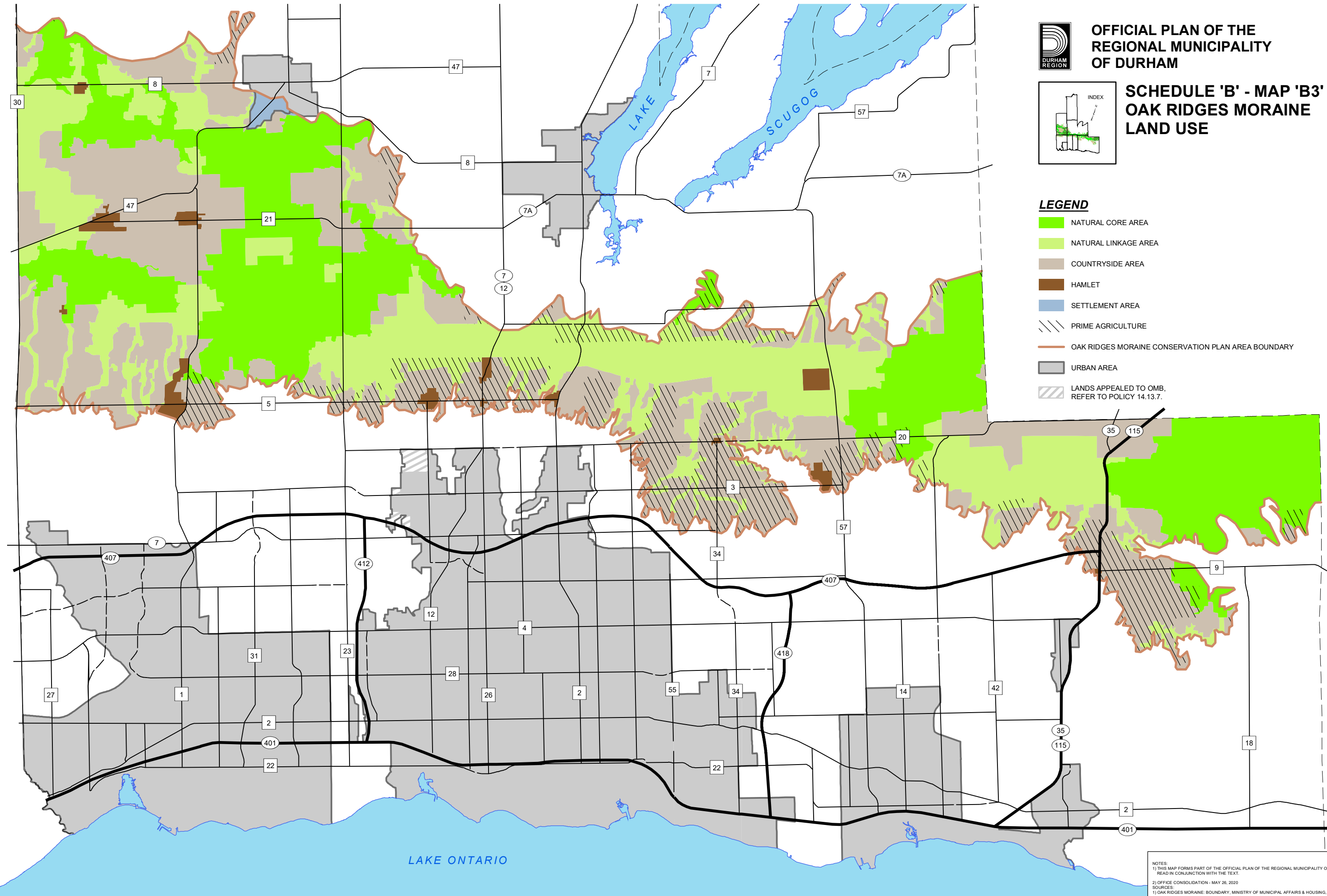
**OFFICIAL PLAN OF THE
REGIONAL MUNICIPALITY
OF DURHAM**



**SCHEDULE 'B' - MAP 'B3'
OAK RIDGES MORaine
LAND USE**

LEGEND

-  NATURAL CORE AREA
-  NATURAL LINKAGE AREA
-  COUNTRYSIDE AREA
-  HAMLET
-  SETTLEMENT AREA
-  PRIME AGRICULTURE
-  OAK RIDGES MORaine CONSERVATION PLAN AREA BOUNDARY
-  URBAN AREA
-  LANDS APPEALED TO OMB, REFER TO POLICY 14.13.7.








NOTES:
 1) THIS MAP FORMS PART OF THE OFFICIAL PLAN OF THE REGIONAL MUNICIPALITY OF DURHAM AND MUST BE READ IN CONJUNCTION WITH THE TEXT.
 2) OFFICE CONSOLIDATION - MAY 26, 2020
SOURCES:
 1) OAK RIDGES MORaine: BOUNDARY, MINISTRY OF MUNICIPAL AFFAIRS & HOUSING, 2002, 1:100,000.

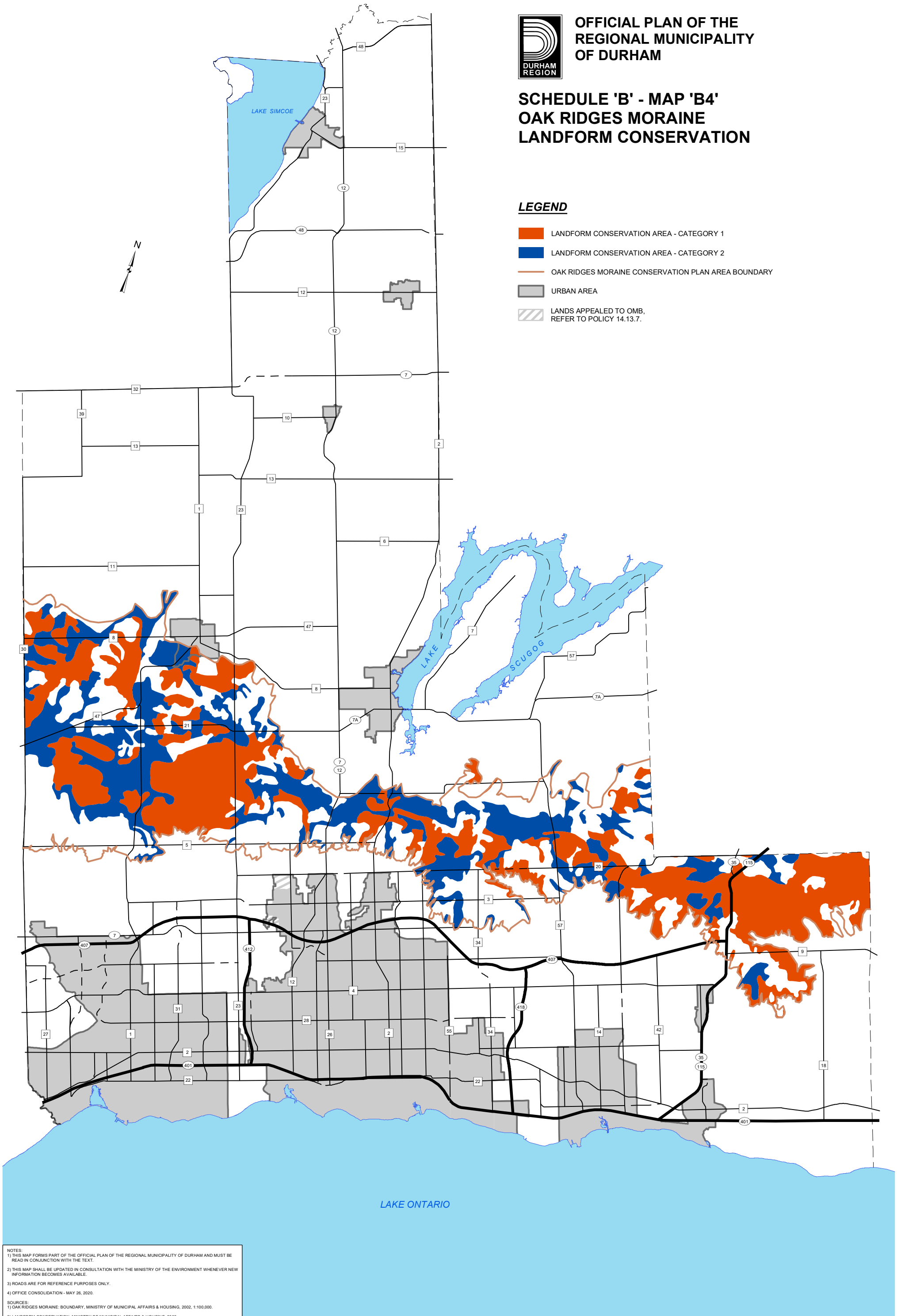


OFFICIAL PLAN OF THE
REGIONAL MUNICIPALITY
OF DURHAM

SCHEDULE 'B' - MAP 'B4'
OAK RIDGES MORaine
LANDFORM CONSERVATION

LEGEND

-  LANDFORM CONSERVATION AREA - CATEGORY 1
-  LANDFORM CONSERVATION AREA - CATEGORY 2
-  OAK RIDGES MORaine CONSERVATION PLAN AREA BOUNDARY
-  URBAN AREA
-  LANDS APPEALED TO OMB,
REFER TO POLICY 14.13.7.



NOTES:
 1) THIS MAP FORMS PART OF THE OFFICIAL PLAN OF THE REGIONAL MUNICIPALITY OF DURHAM AND MUST BE READ IN CONJUNCTION WITH THE TEXT.
 2) THIS MAP SHALL BE UPDATED IN CONSULTATION WITH THE MINISTRY OF THE ENVIRONMENT WHENEVER NEW INFORMATION BECOMES AVAILABLE.
 3) ROADS ARE FOR REFERENCE PURPOSES ONLY.
 4) OFFICE CONSOLIDATION - MAY 26, 2020.

SOURCES:
 1) OAK RIDGES MORaine: BOUNDARY, MINISTRY OF MUNICIPAL AFFAIRS & HOUSING, 2002, 1:100,000.
 2) LANDFORM CONSERVATION: MINISTRY OF MUNICIPAL AFFAIRS & HOUSING, 2002.