

# Realtors Event



Durham Economic Development Partnership  
October 28, 2021



# Whitby's Key Differentiators in Durham Region

1. Two historic downtowns
  1. Downtown Whitby
  2. Downtown Brooklin
2. Waterfront and marina
3. Active greenspaces and two conservations areas
4. Award winning restaurants and breweries



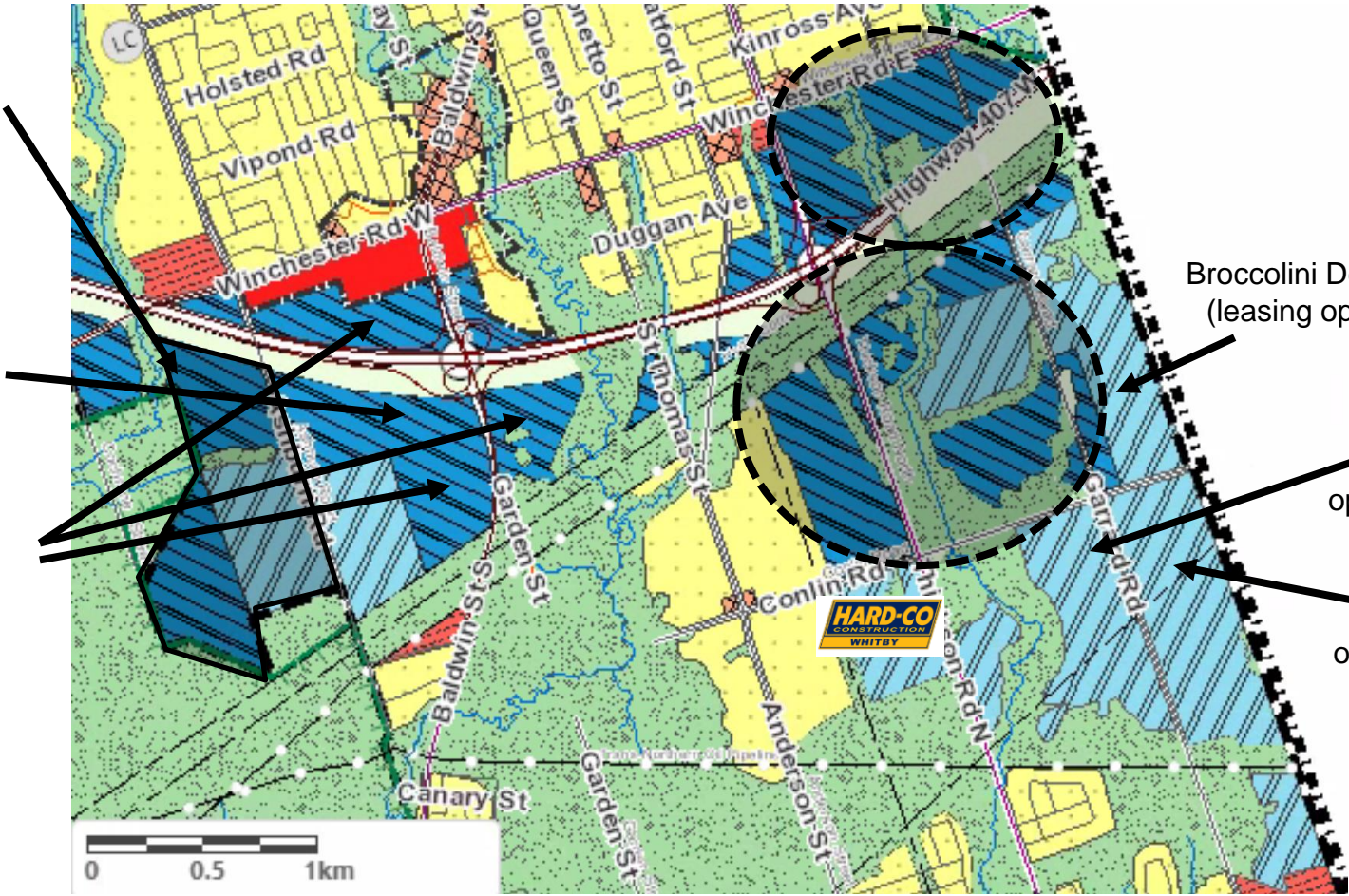
# Signature Area

Ashburn Road to Whitby-Oshawa border, south of Hwy. 407

Town's largest  
Contiguous  
Block  
(approximately  
250 acres)

Whitby's Next  
Sports Centre  
(opening 2024)

Fieldgate's  
Properties  
(leasing  
opportunities)



Broccolini Development  
(leasing opportunities)

Panattoni  
(leasing  
opportunities)

Anatolia  
(leasing  
opportunities)

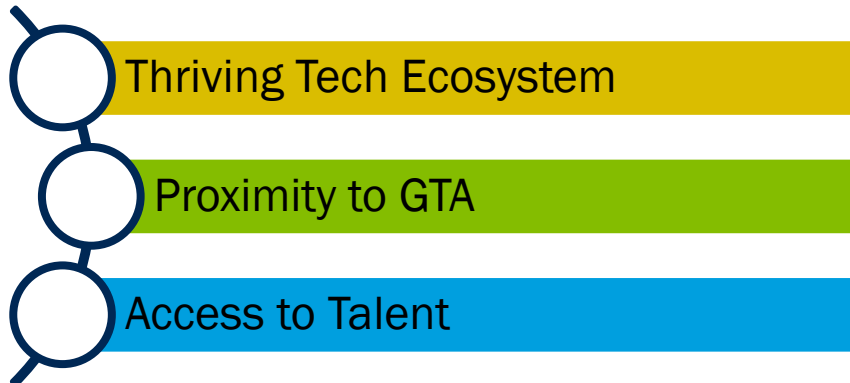
# Case 1: Technology Company

## Servify:

- India based technology company
- After a lengthy process, Servify selected Whitby as the destination for their North American expansion
- Worked with Toronto Global & Durham Region and the Town of Whitby/ 1855 Whitby for the investment attraction/site selection process



## Key Factors Driving Investment:



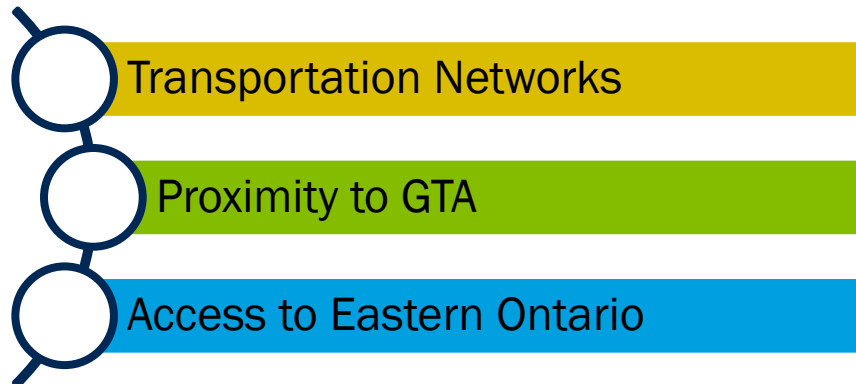


# Case 2: Logistics & Distribution Companies

## Logistics & Distribution:

- Logistics & Distribution companies have expanded into Whitby to serve Eastern Ontario customers and maintain access to eastern GTA.
- **Amazon** – One of the largest multinational technology companies
- **LKQ** – Fortune 500 company that distributes after-market auto parts and supplies
- **Flanagan Food Service** – Canada’s largest independent foodservice distributor

## Key Factors Driving Investment:

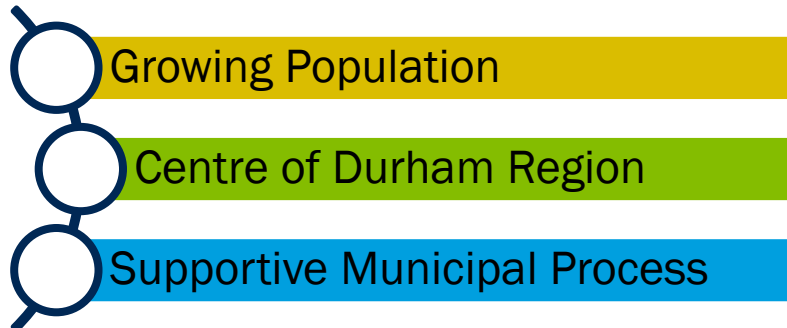


# Case 3: Entertainment Attractions

## Entertainment Attractions:

- Worked with Ontario Ministry of Tourism and Sports to identify local tourism assets and how to attract entertainment investment
- Successfully attracted several investments from SkyZone, Reptilia, IFLY, Playdium, Flying Squirrel, Aspire Rock-climbing, Thermëa Spa
- Whitby Tourism Strategy has launched, along with Whitby Economic Recovery Plan to help navigate future of this sector.

## Key Factors Driving Investment:



# 2021 Business Investment Outcome

---



---

*“We are pleased to announce the opening of the Lear Oshawa facility, which will produce seats later this year on a just-in-time basis for General Motors’ Oshawa pickup truck assembly plant,” said Frank Orsini, Lear Executive Vice President and President, Seating. “Through this investment, we will create hundreds of new jobs, strengthen our community presence and continue to focus on building world-class products for our customers. Projects like this only become a reality when you have great teamwork and true collaboration like we have with the Town of Whitby, General Motors and our union partners.”*

*September 2021*

---

# Business Investment Outcomes



*“We chose the Whitby location because of the proximity to major highways and to better serve our customers.”*

*- Amin Youseff, LKQ*



*“We export all over the globe. Our products are in 53 countries. We have a ready ability to ship our products anywhere they need to go from right here in Whitby.”*

*- Jodi Glover, Real Tech Inc.*



*“Whitby really had a nice demographic for the team that we wanted to build. We felt we were able to hold this location as a draw for people who didn’t want to commute anymore.”*

*- Adam Mitchell, Mitchell & Whale Insurance*



# Connect with us:



**Whitby.ca/business**



**@WhitbyEcDev**



**Town of Whitby, ON**



**Facebook.com/TownofWhitby**



**Town of Whitby, ON**

Daniel Van Kampen, Economic Development Officer, [vankampend@whitby.ca](mailto:vankampend@whitby.ca),  
905.444.3162