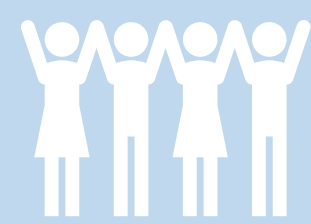




78

Students



5

EDI Developmental Domains



16

Creative products developed



The **Early Development Instrument (EDI)** is a tool used in Durham Region to stay informed about children's development and helps determine their readiness for school. It is a questionnaire completed by teachers for all senior kindergarten children.

The EDI has been completed five times in Durham Region:



How might we address the gap between data and on-the-ground interventions to improve developmental outcomes for children?

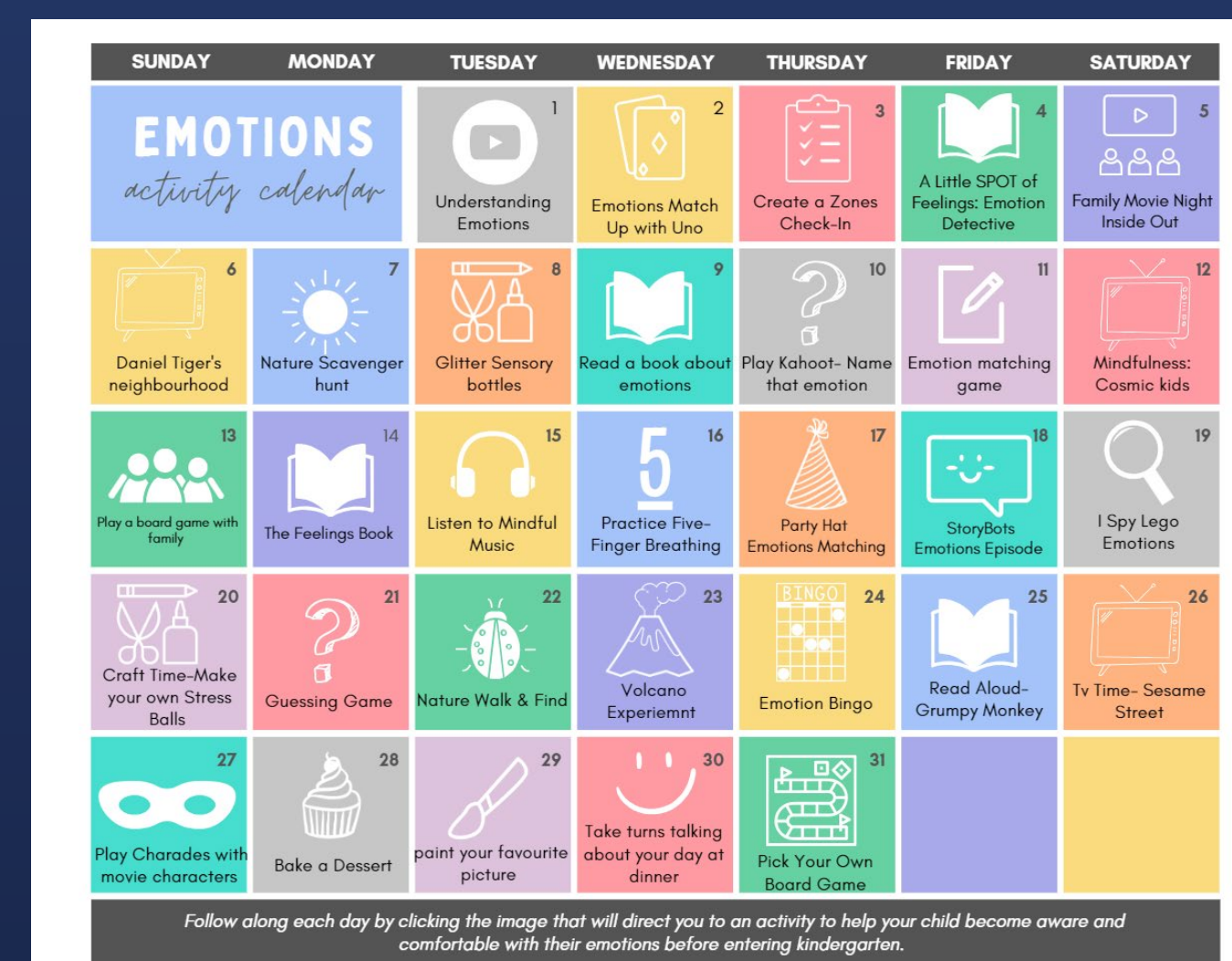


Ontario Tech University's students in the 'Holistic Learning in Early Childhood' course developed **evidence-based products** for our early learning and child care community. Some examples included:

Social Competence board game



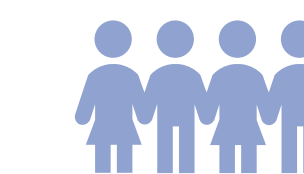
Emotional Maturity development activity calendar



The EDI measures children's ability to meet age-appropriate developmental expectations across the following five development domains:



Physical Health and Well-Being



Social Competence



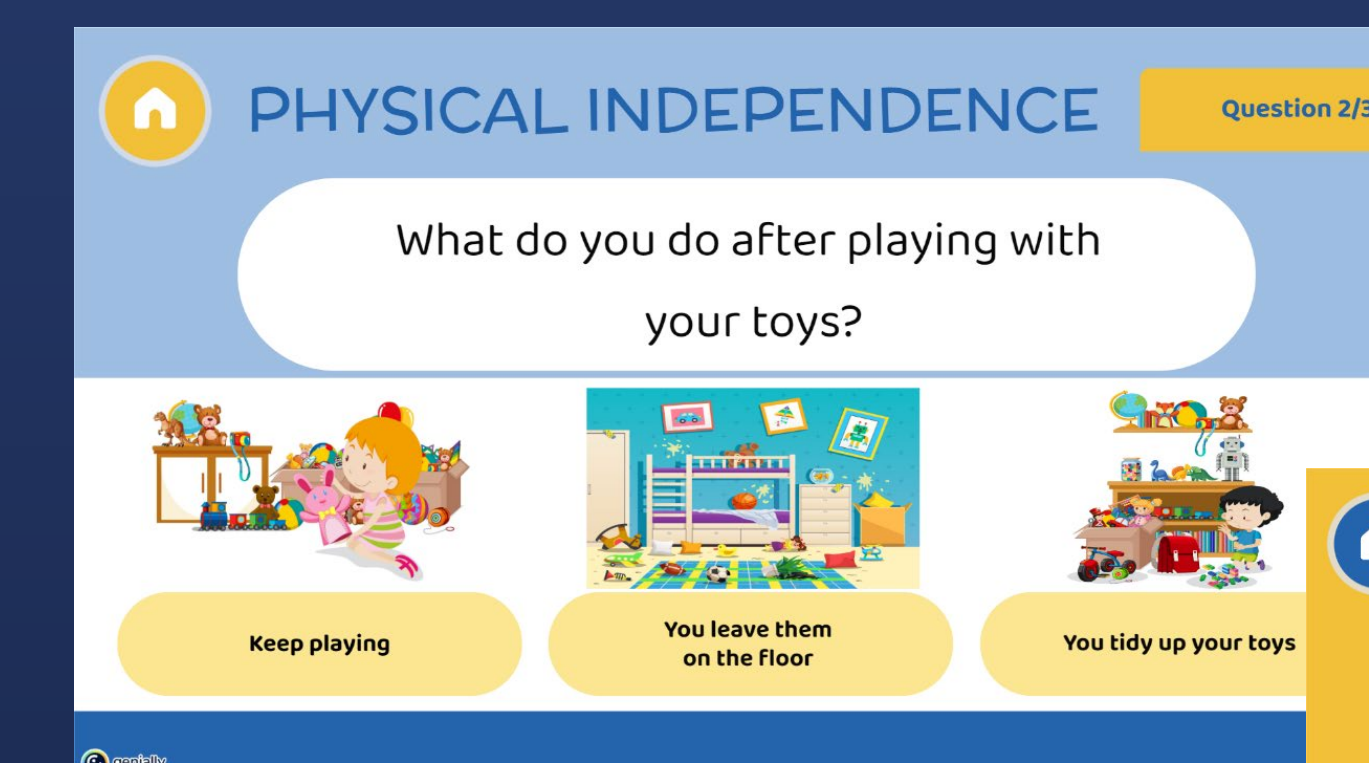
Emotional Maturity



Language and Cognitive Development



Communication Skills and General Knowledge



Physical Health and Well-Being interactive online game

