

## Carruthers (A3)

### Neighbourhood Profile - December 2017



#### Description:

Carruthers is located in the south west corner of Ajax, east of Pickering Beach Road and south of Highway 2. Most of the Carruthers Creek is located in this Neighbourhood, along with the Carruthers Marsh, and two elementary schools.

Population (2011): 12,260

Population Density: 1,100.4 persons per square kilometre

Number of Births (2014): 192

Demographics – 2011	Neighbourhood	Durham Region	Compared to Durham Region
Population growth rate (2006 to 2011)	21.9%	8.6%	<b>HIGHER</b>
Population aged 0-14 years	24.1%	18.6%	<b>HIGHER</b>
Population aged 0-4 years	8.5%	5.7%	<b>HIGHER</b>
Population aged 5-9 years	7.9%	6.1%	<b>HIGHER</b>
Population aged 10-14 years	7.7%	6.8%	similar
Population aged 15-19 years	7.7%	7.7%	similar
Population aged 20-24 years	5.8%	6.5%	similar
Population aged 25-29 years	5.8%	5.7%	similar
Population aged 30-39 years	16.9%	12.6%	<b>HIGHER</b>
Population aged 40-49 years	18.6%	16.5%	similar
Population aged 50-59 years	13.3%	14.8%	similar
Population aged 60-64 years	3.5%	5.5%	<b>LOWER</b>
Population aged 65+ years	5.4%	12.1%	<b>LOWER</b>
Female lone-parent families	13.7%	14.0%	similar
Seniors living alone	6.9%	21.4%	<b>LOWER</b>
Income - Low income rate	9.9%	9.9%	similar
Income - Children less than 6 years in low income households	16.3%	12.8%	<b>HIGHER</b>
Income - Median after-tax household income	\$82,300	\$70,100	similar
Low education (no high school completion)	5.6%	8.9%	<b>LOWER</b>
Unemployment rate	8.2%	8.6%	similar
Commuting duration (median minutes)	40.1	30.1	<b>HIGHER</b>
Aboriginal Population	0.7%	1.5%	<b>LOWER</b>
Recent immigrants (in past 10 years)	7.9%	3.6%	<b>HIGHER</b>
Visible minorities	42.6%	20.7%	<b>HIGHER</b>

## Carruthers (A3) Neighbourhood Profile - December 2017



Housing – 2011	Neighbourhood	Durham Region	Compared to Durham Region
Moved residence in the past year	9.5%	9.9%	similar
Households that rent	7.1%	17.3%	<b>LOWER</b>
Shelter costs of 30% or more of income	28.4%	25.0%	similar
Not suitable housing	6.9%	5.1%	<b>HIGHER</b>
Major dwelling repairs needed	1.3%	5.0%	<b>LOWER</b>
<b>Early Development Instrument (EDI) in senior kindergarten (SK) children – Updated to 2015</b>	--	--	--
Vulnerable in physical health and well-being	16.0%	17.9%	similar
Vulnerable in social competence	10.4%	10.8%	similar
Vulnerable in emotional maturity	10.4%	12.3%	similar
Vulnerable in language and cognitive development	5.2%	4.9%	similar
Vulnerable in communication skills and general knowledge	5.7%	9.0%	<b>LOWER</b>
Vulnerable in one or more domains	28.8%	29.7%	similar
<b>Kindergarten Parent Survey – 2012</b>	--	--	--
SK children in excellent or very good health	92%	92%	similar
Living in a child-friendly neighbourhood	78%	79%	similar
SK children walking or biking to school	15%*	41%	<b>LOWER</b>
<b>General health</b>	--	--	--
Self-rated health excellent/very good, ages 18+	68%	60%	similar
Self-rated mental health excellent/very good, ages 18+	79%	72%	similar
Life expectancy at birth - Males (years)	82.7	80.8	similar
Life expectancy at birth - Females (years)	81.8	85.2	<b>LOWER</b>
<b>Babies and toddlers</b>	--	--	--
Birth rate per 1,000	14.5	10.6	<b>HIGHER</b>
Teen pregnancy rate per 1,000	25.3	25.5	similar
Births to young mothers (ages 14-23)	4.5%	11.0%	<b>LOWER</b>
Births to older mothers (ages 35+)	29.4%	21.5%	<b>HIGHER</b>
Preterm birth rate in singletons – updated	7.8%	6.3%	similar
Small-for-Gestational Age (SGA) rate – updated	9.2%	8.6%	similar
Large-for-Gestational Age (LGA) rate – updated	11.2%	11.6%	similar
Breastfeeding at hospital discharge rate	94.9%	88.9%	<b>HIGHER</b>
Breastmilk only at hospital discharge rate	81.4%	78.3%	similar
Breastfeeding duration rate at 6 months	63%	53%	similar
18-month enhanced Well-Baby Visit – updated	51.2%	56.5%	similar

## Carruthers (A3) Neighbourhood Profile - December 2017



Injury emergency department (ED) visits (rate per 1,000)	Neighbourhood	Durham Region	Compared to Durham Region
All Injuries ED visit rate	96.7	98.3	similar
Sports injuries ED visit rate, ages 10-14	49.6	42.2	similar
Motor vehicle traffic collision ED visit rate, ages 15-24	12.5	9.6	similar
Falls ED visit rate, ages 0-4	56.1	55.5	similar
Falls ED visit rate, ages 65+	39.1	57.3	<b>LOWER</b>
<b>Police calls (rate per 10,000)</b>	--	--	--
Police-reported domestic incidents	53.5	80.4	<b>LOWER</b>
Police-reported domestic incidents with children present	4.9	4.1	similar
<b>Health behaviours</b>	--	--	--
Smoking rate, ages 18+	18%*	18%	similar
Obesity rate, ages 18+	11%*	20%	<b>LOWER</b>
Vegetables and fruit (5 or more servings per day), ages 18+	26%*	33%	similar
Alcohol use in excess of Canada's Low-Risk Alcohol Drinking Guidelines, ages 18+	22%*	23%	similar
High physical activity rate, ages 18-69	38%*	55%	<b>LOWER</b>
<b>Immunization rates</b>	--	--	--
School-required immunizations in ages 7-8	83.2%	75.4%	<b>HIGHER</b>
School-required immunizations in ages 16-17	92.0%	90.7%	similar
Hepatitis B, Grade 7 students	82.2%	74.4%	<b>HIGHER</b>
Meningococcal disease, Grade 7 students	92.4%	90.2%	similar
HPV, Grade 7 students	73.5%	66.4%	similar
Flu shots, ages 18+	26%*	37%	similar
<b>Cancer screening (rate per 100)</b>	--	--	--
Mammography rate, females ages 52-74	58.7	63.4	<b>LOWER</b>
Pap test rate, females ages 23-70	69.7	68.4	similar
Overdue for colorectal screening, ages 50-74	42.7	42.0	similar
<b>Health care (rate per 100)</b>	--	--	--
Population with primary care physician	94.5	95.1	similar
Residence ambulance call rate	2.6	3.9	<b>LOWER</b>
Residence ambulance call rate, ages 65+ years	11.3	15.5	<b>LOWER</b>

## Carruthers (A3) Neighbourhood Profile - December 2017



Health conditions	Neighbourhood	Durham Region	Compared to Durham Region
Asthma ED visit rate (per 1,000), ages 0-14	11.8	10.3	similar
Asthma prevalence rate (per 100), ages 0-14	19.0	19.2	similar
Diabetes prevalence rate (per 100), ages 20+	11.2	10.4	similar
Lung disease (COPD) prevalence rate (per 100), ages 35+	6.8	10.1	<b>LOWER</b>
Cardiovascular disease hospitalization rate (per 1,000), ages 45-64	8.0	9.8	similar
<b>Infectious diseases (rate per 100,000)</b>	--	--	--
Chlamydia incidence rate (per 1,000), females ages 15-24	24.2	17.2	<b>HIGHER</b>
Enteric diseases incidence	54.3	64.4	similar
Influenza incidence	48.9	36.0	similar
Hepatitis C incidence	11.4	27.9	<b>LOWER</b>
Latent Tuberculosis Infection (LTBI) incidence	55.4	33.3	<b>HIGHER</b>

### Profile Notes

For demographic and housing indicators, "LOWER" means at least 20% lower than Durham Region and "HIGHER" means at least 20% higher. For other indicators, "LOWER" or "HIGHER" means that the 95% confidence intervals do not overlap with Durham Region or that the critical difference is significantly different. Similar means that the Health Neighbourhood is similar to Durham Region for that indicator.

When "LOWER" or "HIGHER" is in blue, the indicator is neutral in terms of health. Green means that the Neighbourhood is doing better in terms of health than Durham Region and red indicates it is worse.

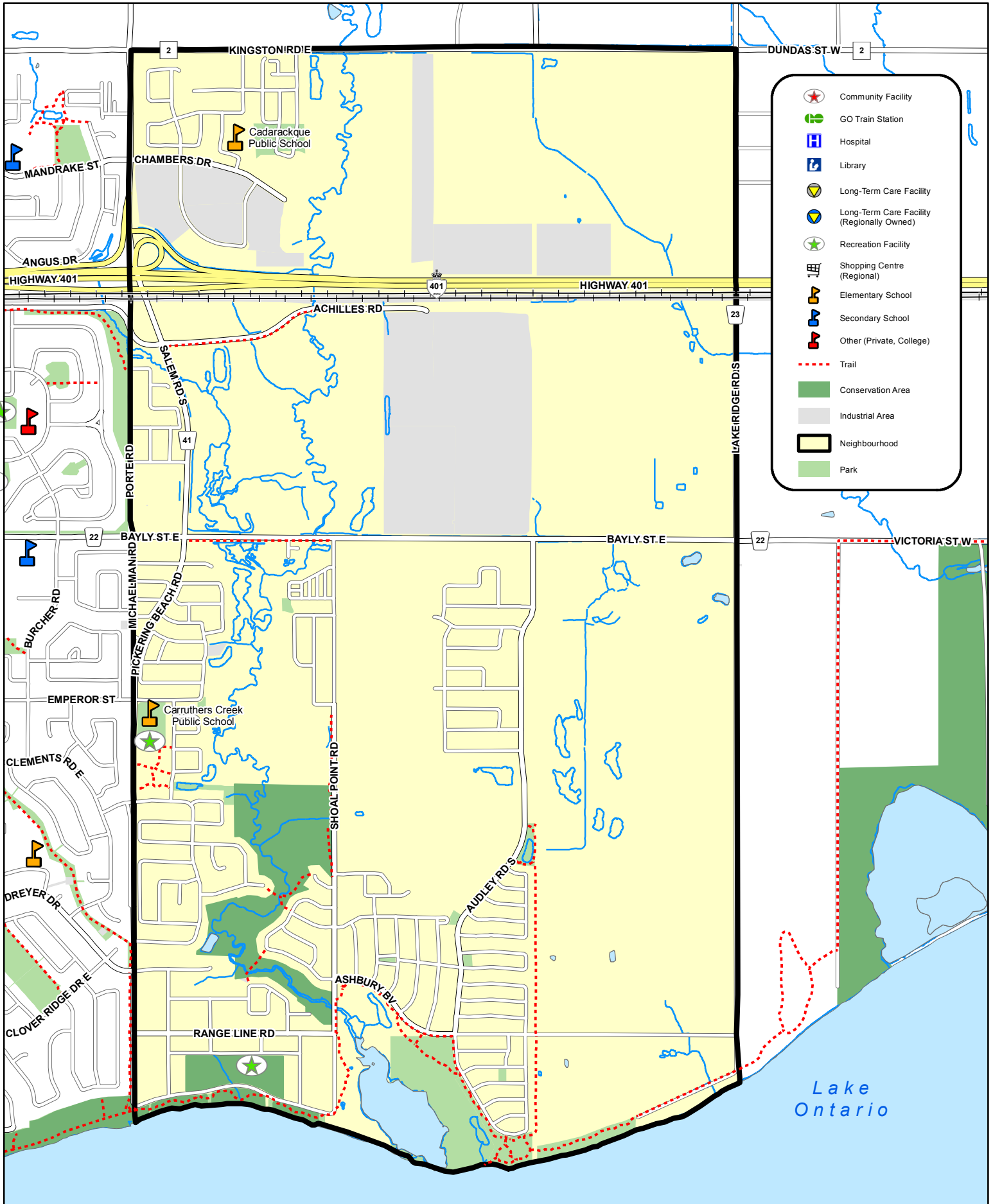
Estimates marked with an asterisk (\*) have high variability and should be used with caution. Some estimates are not releasable due to small numbers.

### Release Date: December 2017

For more information, see the Indicator Summary or The Guide to Health Neighbourhoods at [durham.ca/neighbourhoods](http://durham.ca/neighbourhoods).

If you require this information in an accessible format, contact 1-800-841-2729.

# Carruthers Health Neighbourhood - Ajax 3 (A3)



This map has been produced from a variety of sources. The Region of Durham does not make any representations concerning the accuracy, likely results, or reliability of the use of the materials. The Region hereby disclaims all representations and warranties. Produced by Durham Region under License with the Ontario Ministry of Natural Resources, copyright Queen's Printer for Ontario, 2009. Assessment Parcels (c) MPAO and its suppliers. All rights reserved. NOT A PLAN OF SURVEY. Digital cartography by Corporate GIS Services, The Regional Municipality of Durham, June 2013.

