

Ajax Northwest (A8)

Neighbourhood Profile - December 2017



Description:

Ajax Northwest is a fast-growing community north of Rossland Road and west of Salem Road in the northwest corner of Ajax. Greenwood Conservation Area is a large feature. Two high schools, J. Clarke Richardson Collegiate and Notre Dame Catholic Secondary School, along with three elementary schools and two private schools are located in this Neighbourhood.

Population (2011): 15,170

Population Density: 996.1 persons per square kilometre

Number of Births (2014): 187

Demographics – 2011	Neighbourhood	Durham Region	Compared to Durham Region
Population growth rate (2006 to 2011)	51.4%	8.6%	HIGHER
Population aged 0-14 years	25.6%	18.6%	HIGHER
Population aged 0-4 years	8.3%	5.7%	HIGHER
Population aged 5-9 years	9.0%	6.1%	HIGHER
Population aged 10-14 years	8.2%	6.8%	HIGHER
Population aged 15-19 years	8.0%	7.7%	similar
Population aged 20-24 years	6.2%	6.5%	similar
Population aged 25-29 years	5.4%	5.7%	similar
Population aged 30-39 years	16.8%	12.6%	HIGHER
Population aged 40-49 years	17.1%	16.5%	similar
Population aged 50-59 years	10.5%	14.8%	LOWER
Population aged 60-64 years	3.5%	5.5%	LOWER
Population aged 65+ years	7.0%	12.1%	LOWER
Female lone-parent families	13.5%	14.0%	similar
Seniors living alone	6.8%	21.4%	LOWER
Income - Low income rate	8.8%	9.9%	similar
Income - Children less than 6 years in low income households	10.2%	12.8%	LOWER
Income - Median after-tax household income	\$88,100	\$70,100	HIGHER
Low education (no high school completion)	6.8%	8.9%	LOWER
Unemployment rate	7.6%	8.6%	similar
Commuting duration (median minutes)	40.3	30.1	HIGHER
Aboriginal Population	0.5%	1.5%	LOWER
Recent immigrants (in past 10 years)	10.9%	3.6%	HIGHER
Visible minorities	68.8%	20.7%	HIGHER

Ajax Northwest (A8)

Neighbourhood Profile - December 2017



Housing – 2011	Neighbourhood	Durham Region	Compared to Durham Region
Moved residence in the past year	9.9%	9.9%	similar
Households that rent	7.1%	17.3%	LOWER
Shelter costs of 30% or more of income	32.0%	25.0%	HIGHER
Not suitable housing	7.4%	5.1%	HIGHER
Major dwelling repairs needed	1.6%	5.0%	LOWER
Early Development Instrument (EDI) in senior kindergarten (SK) children – Updated to 2015	--	--	--
Vulnerable in physical health and well-being	19.3%	17.9%	similar
Vulnerable in social competence	17.4%	10.8%	HIGHER
Vulnerable in emotional maturity	17.6%	12.3%	HIGHER
Vulnerable in language and cognitive development	4.8%	4.9%	similar
Vulnerable in communication skills and general knowledge	11.1%	9.0%	similar
Vulnerable in one or more domains	33.3%	29.7%	HIGHER
Kindergarten Parent Survey – 2012	--	--	--
SK children in excellent or very good health	92%	92%	similar
Living in a child-friendly neighbourhood	81%	79%	similar
SK children walking or biking to school	28%*	41%	similar
General health	--	--	--
Self-rated health excellent/very good, ages 18+	57%	60%	similar
Self-rated mental health excellent/very good, ages 18+	74%	72%	similar
Life expectancy at birth - Males (years)	80.9	80.8	similar
Life expectancy at birth - Females (years)	86.1	85.2	similar
Babies and toddlers	--	--	--
Birth rate per 1,000	15.5	10.6	HIGHER
Teen pregnancy rate per 1,000	23.9	25.5	similar
Births to young mothers (ages 14-23)	7.2%	11.0%	LOWER
Births to older mothers (ages 35+)	27.0%	21.5%	HIGHER
Preterm birth rate in singletons – updated	5.2%	6.3%	similar
Small-for-Gestational Age (SGA) rate – updated	12.9%	8.6%	HIGHER
Large-for-Gestational Age (LGA) rate – updated	6.4%	11.6%	LOWER
Breastfeeding at hospital discharge rate	93.8%	88.9%	HIGHER
Breastmilk only at hospital discharge rate	75.8%	78.3%	similar
Breastfeeding duration rate at 6 months	54%	53%	similar
18-month enhanced Well-Baby Visit – updated	45.9%	56.5%	LOWER

Ajax Northwest (A8)

Neighbourhood Profile - December 2017



Injury emergency department (ED) visits (rate per 1,000)	Neighbourhood	Durham Region	Compared to Durham Region
All Injuries ED visit rate	75.3	98.3	LOWER
Sports injuries ED visit rate, ages 10-14	23.5	42.2	LOWER
Motor vehicle traffic collision ED visit rate, ages 15-24	9.6	9.6	similar
Falls ED visit rate, ages 0-4	51.1	55.5	similar
Falls ED visit rate, ages 65+	57.9	57.3	similar
Police calls (rate per 10,000)	--	--	--
Police-reported domestic incidents	56.1	80.4	LOWER
Police-reported domestic incidents with children present	3.8	4.1	similar
Health behaviours	--	--	--
Smoking rate, ages 18+	13%*	18%	similar
Obesity rate, ages 18+	20%*	20%	similar
Vegetables and fruit (5 or more servings per day), ages 18+	32%*	33%	similar
Alcohol use in excess of Canada's Low-Risk Alcohol Drinking Guidelines, ages 18+	NR	23%	--
High physical activity rate, ages 18-69	57%	55%	similar
Immunization rates	--	--	--
School-required immunizations in ages 7-8	79.9%	75.4%	similar
School-required immunizations in ages 16-17	91.9%	90.7%	similar
Hepatitis B, Grade 7 students	78.9%	74.4%	similar
Meningococcal disease, Grade 7 students	95.6%	90.2%	HIGHER
HPV, Grade 7 students	74.5%	66.4%	HIGHER
Flu shots, ages 18+	NR	37%	--
Cancer screening (rate per 100)	--	--	--
Mammography rate, females ages 52-74	58.6	63.4	LOWER
Pap test rate, females ages 23-70	66.0	68.4	LOWER
Overdue for colorectal screening, ages 50-74	48.5	42.0	HIGHER
Health care (rate per 100)	--	--	--
Population with primary care physician	95.4	95.1	similar
Residence ambulance call rate	3.2	3.9	LOWER
Residence ambulance call rate, ages 65+ years	13.1	15.5	LOWER

Ajax Northwest (A8) Neighbourhood Profile - December 2017



Health conditions	Neighbourhood	Durham Region	Compared to Durham Region
Asthma ED visit rate (per 1,000), ages 0-14	13.4	10.3	HIGHER
Asthma prevalence rate (per 100), ages 0-14	20.5	19.2	similar
Diabetes prevalence rate (per 100), ages 20+	14.9	10.4	HIGHER
Lung disease (COPD) prevalence rate (per 100), ages 35+	6.3	10.1	LOWER
Cardiovascular disease hospitalization rate (per 1,000), ages 45-64	6.9	9.8	LOWER
Infectious diseases (rate per 100,000)	--	--	--
Chlamydia incidence rate (per 1,000), females ages 15-24	22.3	17.2	similar
Enteric diseases incidence	44.0	64.4	similar
Influenza incidence	35.7	36.0	similar
Hepatitis C incidence	13.2	27.9	LOWER
Latent Tuberculosis Infection (LTBI) incidence	64.7	33.3	HIGHER

Profile Notes

For demographic and housing indicators, "LOWER" means at least 20% lower than Durham Region and "HIGHER" means at least 20% higher. For other indicators, "LOWER" or "HIGHER" means that the 95% confidence intervals do not overlap with Durham Region or that the critical difference is significantly different. Similar means that the Health Neighbourhood is similar to Durham Region for that indicator.

When "LOWER" or "HIGHER" is in blue, the indicator is neutral in terms of health. Green means that the Neighbourhood is doing better in terms of health than Durham Region and red indicates it is worse.

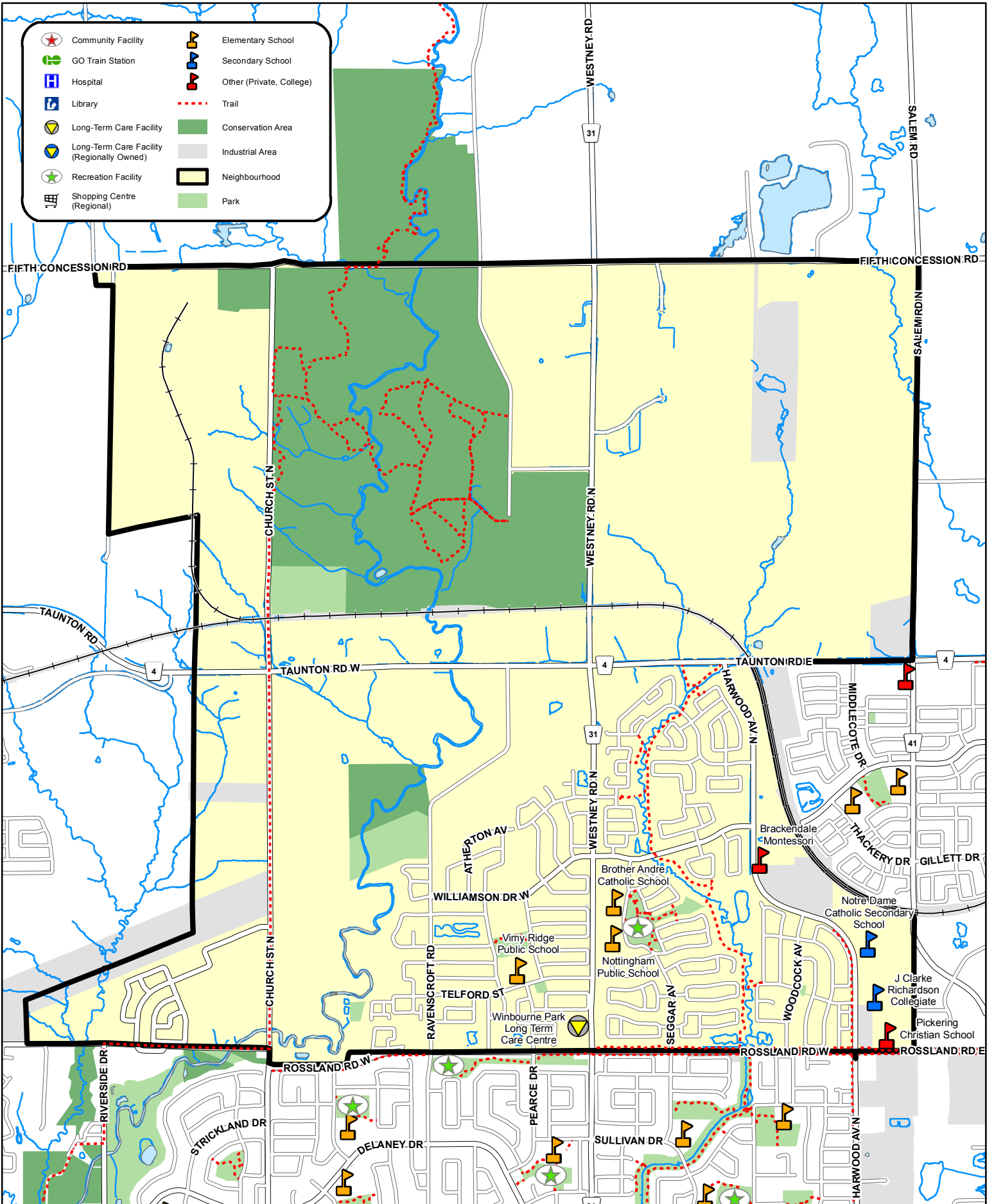
Estimates marked with an asterisk (*) have high variability and should be used with caution. Some estimates are not releasable due to small numbers.

Release Date: December 2017

For more information, see the Indicator Summary or The Guide to Health Neighbourhoods at durham.ca/neighbourhoods.

If you require this information in an accessible format, contact 1-800-841-2729.

Ajax Northwest Health Neighbourhood - Ajax 8 (A8)



	Community Facility		Elementary School
	GO Train Station		Secondary School
	Hospital		Other (Private, College)
	Library		Trail
	Long-Term Care Facility		Conservation Area
	Long-Term Care Facility (Regionally Owned)		Industrial Area
	Recreation Facility		Neighbourhood
	Shopping Centre (Regional)		Park

This map has been produced from a variety of sources. The Region of Durham does not make any representations concerning the accuracy, likely results, or reliability of the use of the materials. The Region hereby disclaims all representations and warranties. Produced by Durham Region under License with the Ontario Ministry of Natural Resources, copyright Queen's Printer for Ontario, 2009. Assessment Parcels (c) MPAO and its suppliers. All rights reserved. NOT A PLAN OF SURVEY. Digital cartography by Corporate GIS Services, The Regional Municipality of Durham, June 2013.

