

Courtice North (C2) Neighbourhood Profile - December 2017



Description:

Courtice North in Clarington extends from the Oshawa border to Solina Road, encompassing the area between Highway 2 to Taunton Road. The Neighbourhood contains Courtice Secondary School, four elementary/intermediate schools, and the Courtice Community Complex.

Population (2011): 10,270

Population Density: 492.3 persons per square kilometre

Number of Births (2014): 86

Demographics – 2011	Neighbourhood	Durham Region	Compared to Durham Region
Population growth rate (2006 to 2011)	3.2%	8.6%	LOWER
Population aged 0-14 years	16.5%	18.6%	similar
Population aged 0-4 years	4.7%	5.7%	similar
Population aged 5-9 years	5.2%	6.1%	similar
Population aged 10-14 years	6.6%	6.8%	similar
Population aged 15-19 years	8.8%	7.7%	similar
Population aged 20-24 years	6.9%	6.5%	similar
Population aged 25-29 years	5.2%	5.7%	similar
Population aged 30-39 years	11.2%	12.6%	similar
Population aged 40-49 years	17.2%	16.5%	similar
Population aged 50-59 years	16.0%	14.8%	similar
Population aged 60-64 years	5.6%	5.5%	similar
Population aged 65+ years	12.5%	12.1%	similar
Female lone-parent families	11.2%	14.0%	similar
Seniors living alone	17.5%	21.4%	similar
Income - Low income rate	7.8%	9.9%	LOWER
Income - Children less than 6 years in low income households	7.8%	12.8%	LOWER
Income - Median after-tax household income	\$75,200	\$70,100	similar
Low education (no high school completion)	6.9%	8.9%	LOWER
Unemployment rate	7.0%	8.6%	similar
Commuting duration (median minutes)	20.5	30.1	LOWER
Aboriginal Population	1.4%	1.5%	similar
Recent immigrants (in past 10 years)	0.9%	3.6%	LOWER
Visible minorities	5.9%	20.7%	LOWER

Courtice North (C2)

Neighbourhood Profile - December 2017



Housing – 2011	Neighbourhood	Durham Region	Compared to Durham Region
Moved residence in the past year	10.2%	9.9%	similar
Households that rent	9.0%	17.3%	LOWER
Shelter costs of 30% or more of income	19.1%	25.0%	LOWER
Not suitable housing	3.6%	5.1%	LOWER
Major dwelling repairs needed	2.2%	5.0%	LOWER
Early Development Instrument (EDI) in senior kindergarten (SK) children – Updated to 2015	--	--	--
Vulnerable in physical health and well-being	18.2%	17.9%	similar
Vulnerable in social competence	11.1%	10.8%	similar
Vulnerable in emotional maturity	14.1%	12.3%	similar
Vulnerable in language and cognitive development	9.1%	4.9%	HIGHER
Vulnerable in communication skills and general knowledge	9.1%	9.0%	similar
Vulnerable in one or more domains	29.3%	29.7%	similar
Kindergarten Parent Survey – 2012	--	--	--
SK children in excellent or very good health	94%	92%	similar
Living in a child-friendly neighbourhood	90%	79%	similar
SK children walking or biking to school	25%*	41%	similar
General health	--	--	--
Self-rated health excellent/very good, ages 18+	45%	60%	LOWER
Self-rated mental health excellent/very good, ages 18+	69%	72%	similar
Life expectancy at birth - Males (years)	82.2	80.8	similar
Life expectancy at birth - Females (years)	89.8	85.2	HIGHER
Babies and toddlers	--	--	--
Birth rate per 1,000	8.9	10.6	similar
Teen pregnancy rate per 1,000	13.6	25.5	LOWER
Births to young mothers (ages 14-23)	10.3%	11.0%	similar
Births to older mothers (ages 35+)	15.7%	21.5%	LOWER
Preterm birth rate in singletons – updated	8.3%	6.3%	similar
Small-for-Gestational Age (SGA) rate – updated	6.7%	8.6%	similar
Large-for-Gestational Age (LGA) rate – updated	14.3%	11.6%	similar
Breastfeeding at hospital discharge rate	86.9%	88.9%	similar
Breastmilk only at hospital discharge rate	79.1%	78.3%	similar
Breastfeeding duration rate at 6 months	50%	53%	similar
18-month enhanced Well-Baby Visit – updated	65.6%	56.5%	HIGHER

Courtice North (C2) Neighbourhood Profile - December 2017



Injury emergency department (ED) visits (rate per 1,000)	Neighbourhood	Durham Region	Compared to Durham Region
All Injuries ED visit rate	79.8	98.3	LOWER
Sports injuries ED visit rate, ages 10-14	28.9	42.2	LOWER
Motor vehicle traffic collision ED visit rate, ages 15-24	8.3	9.6	similar
Falls ED visit rate, ages 0-4	47.9	55.5	similar
Falls ED visit rate, ages 65+	53.2	57.3	similar
Police calls (rate per 10,000)	--	--	--
Police-reported domestic incidents	53.2	80.4	LOWER
Police-reported domestic incidents with children present	1.4	4.1	LOWER
Health behaviours	--	--	--
Smoking rate, ages 18+	19%*	18%	similar
Obesity rate, ages 18+	21%*	20%	similar
Vegetables and fruit (5 or more servings per day), ages 18+	26%*	33%	similar
Alcohol use in excess of Canada's Low-Risk Alcohol Drinking Guidelines, ages 18+	35%*	23%	similar
High physical activity rate, ages 18-69	46%	55%	similar
Immunization rates	--	--	--
School-required immunizations in ages 7-8	75.7%	75.4%	similar
School-required immunizations in ages 16-17	83.7%	90.7%	LOWER
Hepatitis B, Grade 7 students	69.8%	74.4%	similar
Meningococcal disease, Grade 7 students	84.0%	90.2%	similar
HPV, Grade 7 students	65.1%	66.4%	similar
Flu shots, ages 18+	41%*	37%	similar
Cancer screening (rate per 100)	--	--	--
Mammography rate, females ages 52-74	67.0	63.4	similar
Pap test rate, females ages 23-70	69.9	68.4	similar
Overdue for colorectal screening, ages 50-74	42.0	42.0	similar
Health care (rate per 100)	--	--	--
Population with primary care physician	96.3	95.1	similar
Residence ambulance call rate	3.2	3.9	LOWER
Residence ambulance call rate, ages 65+ years	13.1	15.5	LOWER

Courtice North (C2) Neighbourhood Profile - December 2017



Health conditions	Neighbourhood	Durham Region	Compared to Durham Region
Asthma ED visit rate (per 1,000), ages 0-14	4.9	10.3	LOWER
Asthma prevalence rate (per 100), ages 0-14	22.9	19.2	HIGHER
Diabetes prevalence rate (per 100), ages 20+	8.6	10.4	LOWER
Lung disease (COPD) prevalence rate (per 100), ages 35+	10.2	10.1	similar
Cardiovascular disease hospitalization rate (per 1,000), ages 45-64	7.4	9.8	LOWER
Infectious diseases (rate per 100,000)	--	--	--
Chlamydia incidence rate (per 1,000), females ages 15-24	10.7	17.2	LOWER
Enteric diseases incidence	58.3	64.4	similar
Influenza incidence	19.4	36.0	similar
Hepatitis C incidence	17.5	27.9	similar
Latent Tuberculosis Infection (LTBI) incidence	17.5	33.3	similar

Profile Notes

For demographic and housing indicators, "LOWER" means at least 20% lower than Durham Region and "HIGHER" means at least 20% higher. For other indicators, "LOWER" or "HIGHER" means that the 95% confidence intervals do not overlap with Durham Region or that the critical difference is significantly different. Similar means that the Health Neighbourhood is similar to Durham Region for that indicator.

When "LOWER" or "HIGHER" is in blue, the indicator is neutral in terms of health. Green means that the Neighbourhood is doing better in terms of health than Durham Region and red indicates it is worse.

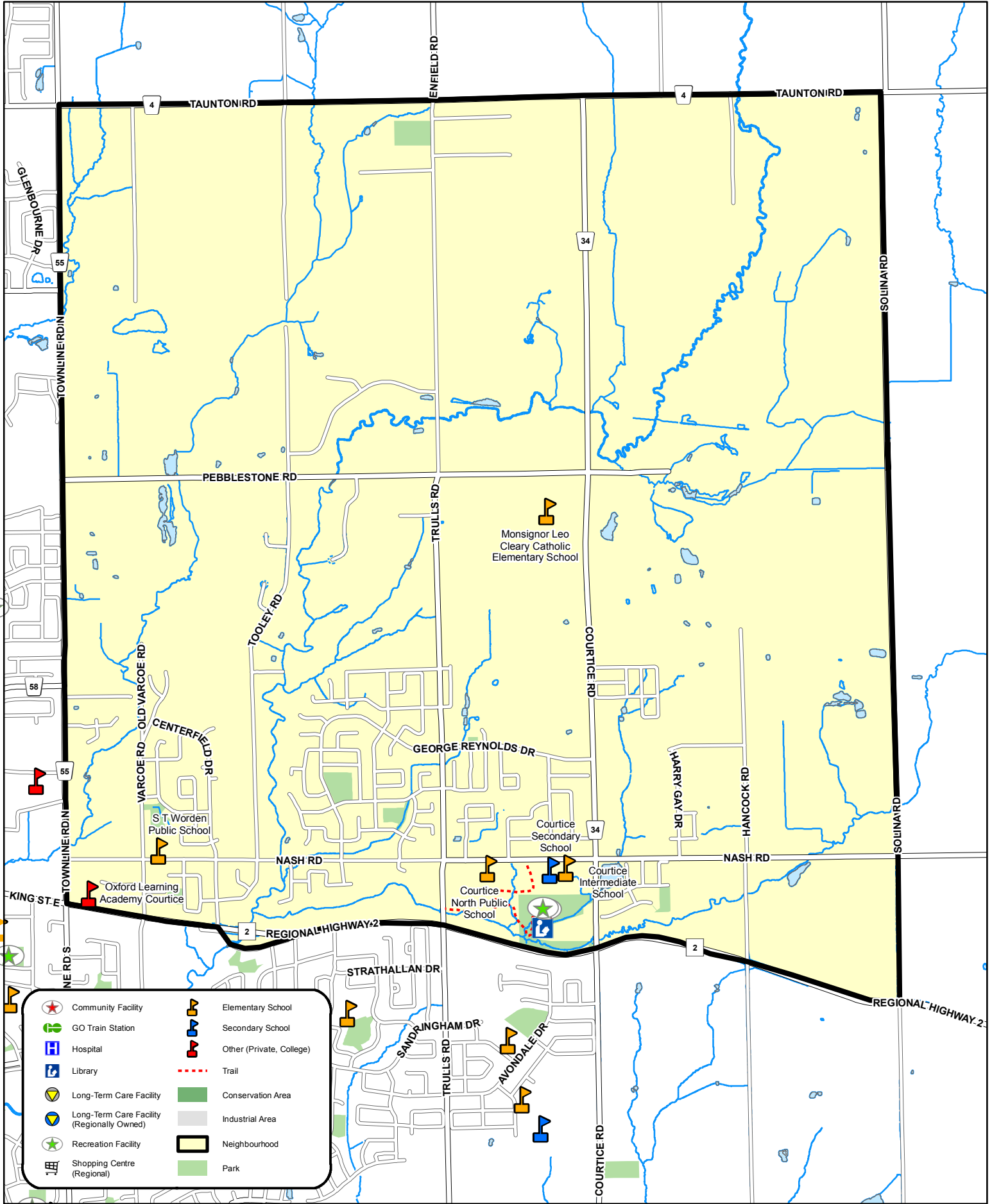
Estimates marked with an asterisk (*) have high variability and should be used with caution. Some estimates are not releasable due to small numbers.

Release Date: December 2017

For more information, see the Indicator Summary or The Guide to Health Neighbourhoods at durham.ca/neighbourhoods.

If you require this information in an accessible format, contact 1-800-841-2729.

Courtice North Health Neighbourhood - Clarington 2 (C2)



	Community Facility		Elementary School
	GO Train Station		Secondary School
	Hospital		Other (Private, College)
	Library		Trail
	Long-Term Care Facility		Conservation Area
	Long-Term Care Facility (Regionally Owned)		Industrial Area
	Recreation Facility		Neighbourhood
	Shopping Centre (Regional)		Park

This map has been produced from a variety of sources. The Region of Durham does not make any representations concerning the accuracy, likely results, or reliability of the use of the materials. The Region of Durham disclaims all representations and warranties. Produced by Durham Region under License with the Ontario Ministry of Natural Resources, copyright Queen's Printer for Ontario, 2009. Assessment Periods (c) MPAAC and its suppliers. All rights reserved. NOT A PLAN OF SURVEY. Digital cartography by Corporate GIS Services, The Regional Municipality of Durham, October 2017.

