

Bowmanville North (C5) Neighbourhood Profile - December 2017



Description:

Bowmanville North in Clarington is bounded by Concession 3 to the north, Lambs Road to the east, the railroad line to the south and Regional Road 57 (Martin Road) to the west. The Bowmanville Valley Conservation area fills the west side. St Stephen's Secondary School, three elementary schools and various private school are located in this Neighbourhood.

Population (2011): 11,230

Population Density: 2,105.6 persons per square kilometre

Number of Births (2014): 227

Demographics – 2011	Neighbourhood	Durham Region	Compared to Durham Region
Population growth rate (2006 to 2011)	41.7%	8.6%	HIGHER
Population aged 0-14 years	24.6%	18.6%	HIGHER
Population aged 0-4 years	9.8%	5.7%	HIGHER
Population aged 5-9 years	7.6%	6.1%	HIGHER
Population aged 10-14 years	7.3%	6.8%	similar
Population aged 15-19 years	7.5%	7.7%	similar
Population aged 20-24 years	5.1%	6.5%	LOWER
Population aged 25-29 years	8.0%	5.7%	HIGHER
Population aged 30-39 years	19.3%	12.6%	HIGHER
Population aged 40-49 years	15.6%	16.5%	similar
Population aged 50-59 years	9.9%	14.8%	LOWER
Population aged 60-64 years	3.7%	5.5%	LOWER
Population aged 65+ years	7.2%	12.1%	LOWER
Female lone-parent families	12.7%	14.0%	similar
Seniors living alone	17.7%	21.4%	similar
Income - Low income rate	11.7%	9.9%	similar
Income - Children less than 6 years in low income households	21.6%	12.8%	HIGHER
Income - Median after-tax household income	\$73,600	\$70,100	similar
Low education (no high school completion)	8.0%	8.9%	similar
Unemployment rate	7.0%	8.6%	similar
Commuting duration (median minutes)	25.9	30.1	similar
Aboriginal Population	2.2%	1.5%	HIGHER
Recent immigrants (in past 10 years)	1.4%	3.6%	LOWER
Visible minorities	7.1%	20.7%	LOWER

Bowmanville North (C5) Neighbourhood Profile - December 2017



Housing – 2011	Neighbourhood	Durham Region	Compared to Durham Region
Moved residence in the past year	11.5%	9.9%	similar
Households that rent	7.0%	17.3%	LOWER
Shelter costs of 30% or more of income	25.9%	25.0%	similar
Not suitable housing	3.7%	5.1%	LOWER
Major dwelling repairs needed	1.8%	5.0%	LOWER
Early Development Instrument (EDI) in senior kindergarten (SK) children – Updated to 2015	--	--	--
Vulnerable in physical health and well-being	16.7%	17.9%	similar
Vulnerable in social competence	6.3%	10.8%	LOWER
Vulnerable in emotional maturity	8.6%	12.3%	LOWER
Vulnerable in language and cognitive development	3.2%	4.9%	similar
Vulnerable in communication skills and general knowledge	5.9%	9.0%	LOWER
Vulnerable in one or more domains	24.4%	29.7%	LOWER
Kindergarten Parent Survey – 2012	--	--	--
SK children in excellent or very good health	95%	92%	similar
Living in a child-friendly neighbourhood	77%	79%	similar
SK children walking or biking to school	44%	41%	similar
General health	--	--	--
Self-rated health excellent/very good, ages 18+	60%	60%	similar
Self-rated mental health excellent/very good, ages 18+	74%	72%	similar
Life expectancy at birth - Males (years)	82.5	80.8	similar
Life expectancy at birth - Females (years)	87.8	85.2	similar
Babies and toddlers	--	--	--
Birth rate per 1,000	19.3	10.6	HIGHER
Teen pregnancy rate per 1,000	19.9	25.5	similar
Births to young mothers (ages 14-23)	6.4%	11.0%	LOWER
Births to older mothers (ages 35+)	14.0%	21.5%	LOWER
Preterm birth rate in singletons – updated	6.4%	6.3%	similar
Small-for-Gestational Age (SGA) rate – updated	6.7%	8.6%	similar
Large-for-Gestational Age (LGA) rate – updated	15.5%	11.6%	HIGHER
Breastfeeding at hospital discharge rate	85.9%	88.9%	similar
Breastmilk only at hospital discharge rate	79.0%	78.3%	similar
Breastfeeding duration rate at 6 months	47%	53%	similar
18-month enhanced Well-Baby Visit – updated	69.2%	56.5%	HIGHER

Bowmanville North (C5) Neighbourhood Profile - December 2017



Injury emergency department (ED) visits (rate per 1,000)	Neighbourhood	Durham Region	Compared to Durham Region
All Injuries ED visit rate	128.0	98.3	HIGHER
Sports injuries ED visit rate, ages 10-14	56.0	42.2	HIGHER
Motor vehicle traffic collision ED visit rate, ages 15-24	13.2	9.6	HIGHER
Falls ED visit rate, ages 0-4	66.1	55.5	HIGHER
Falls ED visit rate, ages 65+	45.7	57.3	LOWER
Police calls (rate per 10,000)	--	--	--
Police-reported domestic incidents	67.0	80.4	LOWER
Police-reported domestic incidents with children present	3.0	4.1	similar
Health behaviours	--	--	--
Smoking rate, ages 18+	21%	18%	similar
Obesity rate, ages 18+	19%	20%	similar
Vegetables and fruit (5 or more servings per day), ages 18+	33%*	33%	similar
Alcohol use in excess of Canada's Low-Risk Alcohol Drinking Guidelines, ages 18+	24%*	23%	similar
High physical activity rate, ages 18-69	53%	55%	similar
Immunization rates	--	--	--
School-required immunizations in ages 7-8	78.3%	75.4%	similar
School-required immunizations in ages 16-17	92.1%	90.7%	similar
Hepatitis B, Grade 7 students	72.0%	74.4%	similar
Meningococcal disease, Grade 7 students	89.9%	90.2%	similar
HPV, Grade 7 students	64.0%	66.4%	similar
Flu shots, ages 18+	28%*	37%	similar
Cancer screening (rate per 100)	--	--	--
Mammography rate, females ages 52-74	69.7	63.4	HIGHER
Pap test rate, females ages 23-70	71.3	68.4	HIGHER
Overdue for colorectal screening, ages 50-74	43.1	42.0	similar
Health care (rate per 100)	--	--	--
Population with primary care physician	97.1	95.1	HIGHER
Residence ambulance call rate	3.0	3.9	LOWER
Residence ambulance call rate, ages 65+ years	12.3	15.5	LOWER

Bowmanville North (C5) Neighbourhood Profile - December 2017



Health conditions	Neighbourhood	Durham Region	Compared to Durham Region
Asthma ED visit rate (per 1,000), ages 0-14	11.1	10.3	similar
Asthma prevalence rate (per 100), ages 0-14	20.9	19.2	similar
Diabetes prevalence rate (per 100), ages 20+	10.5	10.4	similar
Lung disease (COPD) prevalence rate (per 100), ages 35+	12.2	10.1	HIGHER
Cardiovascular disease hospitalization rate (per 1,000), ages 45-64	10.3	9.8	similar
Infectious diseases (rate per 100,000)	--	--	--
Chlamydia incidence rate (per 1,000), females ages 15-24	14.4	17.2	similar
Enteric diseases incidence	65.3	64.4	similar
Influenza incidence	64.1	36.0	HIGHER
Hepatitis C incidence	21.4	27.9	similar
Latent Tuberculosis Infection (LTBI) incidence	12.5	33.3	LOWER

Profile Notes

For demographic and housing indicators, "LOWER" means at least 20% lower than Durham Region and "HIGHER" means at least 20% higher. For other indicators, "LOWER" or "HIGHER" means that the 95% confidence intervals do not overlap with Durham Region or that the critical difference is significantly different. Similar means that the Health Neighbourhood is similar to Durham Region for that indicator.

When "LOWER" or "HIGHER" is in blue, the indicator is neutral in terms of health. Green means that the Neighbourhood is doing better in terms of health than Durham Region and red indicates it is worse.

Estimates marked with an asterisk (*) have high variability and should be used with caution. Some estimates are not releasable due to small numbers.

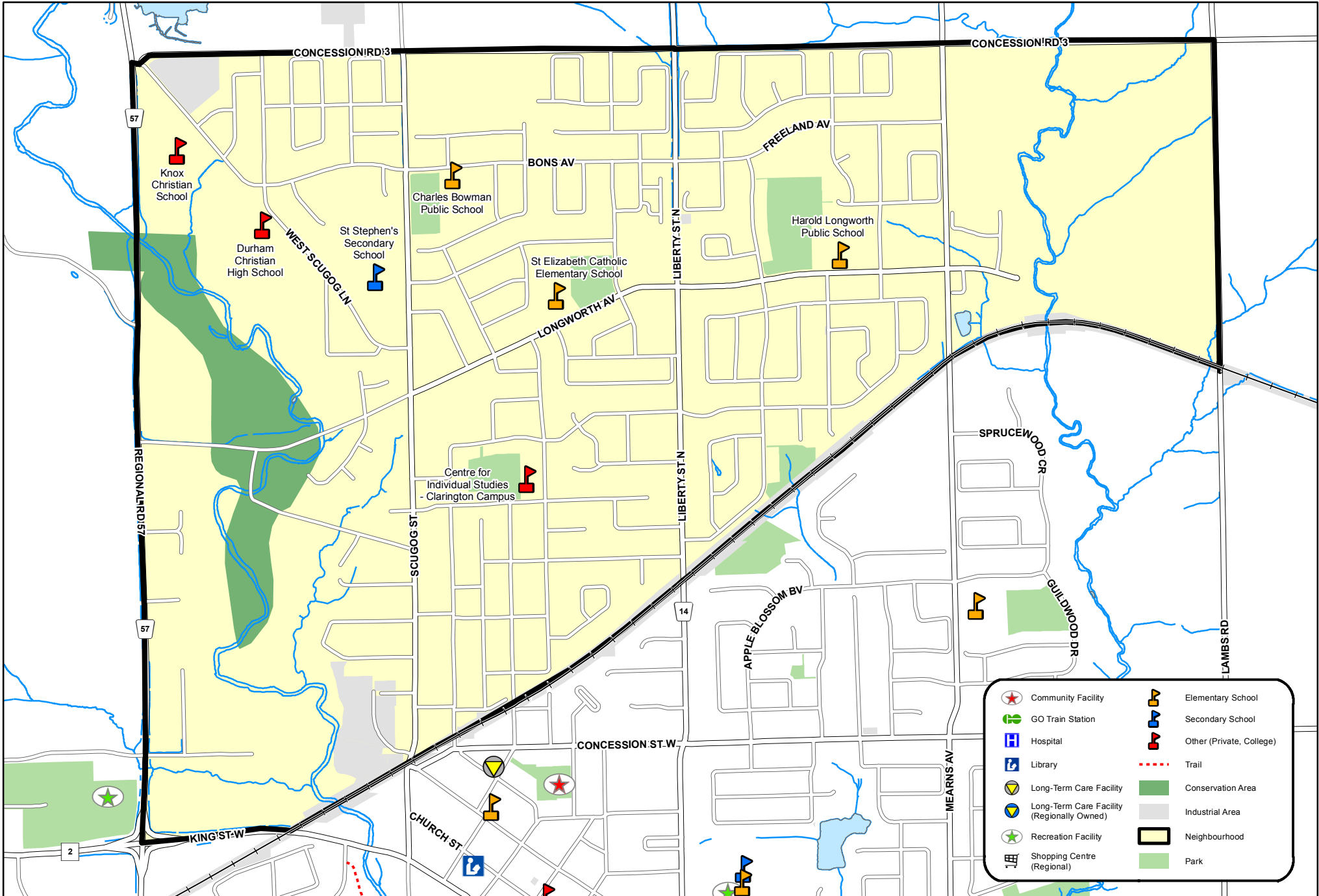
Release Date: December 2017

For more information, see the Indicator Summary or The Guide to Health Neighbourhoods at durham.ca/neighbourhoods.

If you require this information in an accessible format, contact 1-800-841-2729.



Bowmanville North Health Neighbourhood - Clarington 5 (C5)



This map has been produced from a variety of sources. The Region of Durham does not make any representations concerning the accuracy, likely results, or reliability of the use of the materials. The Region hereby disclaims all representations and warranties. Produced by Durham Region under License with the Ontario Ministry of Natural Resources, copyright Queen's Printer for Ontario, 2009. Assessment Parcels (c) MPAC and its suppliers. All rights reserved. NOT A PLAN OF SURVEY. Digital cartography by Corporate GIS Services, The Regional Municipality of Durham, July 2013.

