

Brock Ridge Pickering (P6) Neighbourhood Profile - December 2017



Description:

Brock Road runs through the Neighbourhood of Brock Ridge Pickering, which extends from Highway 2 to Taunton Road in the north. Pine Ridge Secondary School, four elementary schools as well as portions of the Seaton hiking trail are located in this Neighbourhood.

Population (2011): 9,435

Population Density: 940.1 persons per square kilometre

Number of Births (2014): 154

Demographics – 2011	Neighbourhood	Durham Region	Compared to Durham Region
Population growth rate (2006 to 2011)	4.0%	8.6%	LOWER
Population aged 0-14 years	18.8%	18.6%	similar
Population aged 0-4 years	5.2%	5.7%	similar
Population aged 5-9 years	6.0%	6.1%	similar
Population aged 10-14 years	7.5%	6.8%	similar
Population aged 15-19 years	9.4%	7.7%	HIGHER
Population aged 20-24 years	8.4%	6.5%	HIGHER
Population aged 25-29 years	6.8%	5.7%	HIGHER
Population aged 30-39 years	11.7%	12.6%	similar
Population aged 40-49 years	16.5%	16.5%	similar
Population aged 50-59 years	15.5%	14.8%	similar
Population aged 60-64 years	5.5%	5.5%	similar
Population aged 65+ years	8.2%	12.1%	LOWER
Female lone-parent families	14.2%	14.0%	similar
Seniors living alone	8.1%	21.4%	LOWER
Income - Low income rate	11.2%	9.9%	similar
Income - Children less than 6 years in low income households	13.3%	12.8%	similar
Income - Median after-tax household income	\$82,400	\$70,100	similar
Low education (no high school completion)	6.6%	8.9%	LOWER
Unemployment rate	8.5%	8.6%	similar
Commuting duration (median minutes)	35.9	30.1	similar
Aboriginal Population	0.6%	1.5%	LOWER
Recent immigrants (in past 10 years)	7.9%	3.6%	HIGHER
Visible minorities	58.9%	20.7%	HIGHER

Brock Ridge Pickering (P6) Neighbourhood Profile - December 2017



Housing – 2011	Neighbourhood	Durham Region	Compared to Durham Region
Moved residence in the past year	4.8%	9.9%	LOWER
Households that rent	5.9%	17.3%	LOWER
Shelter costs of 30% or more of income	26.2%	25.0%	similar
Not suitable housing	7.9%	5.1%	HIGHER
Major dwelling repairs needed	4.9%	5.0%	similar
Early Development Instrument (EDI) in senior kindergarten (SK) children – Updated to 2015	--	--	--
Vulnerable in physical health and well-being	16.1%	17.9%	similar
Vulnerable in social competence	12.1%	10.8%	similar
Vulnerable in emotional maturity	6.0%	12.3%	LOWER
Vulnerable in language and cognitive development	7.4%	4.9%	HIGHER
Vulnerable in communication skills and general knowledge	8.1%	9.0%	similar
Vulnerable in one or more domains	24.8%	29.7%	LOWER
Kindergarten Parent Survey – 2012	--	--	--
SK children in excellent or very good health	97%	92%	similar
Living in a child-friendly neighbourhood	71%*	79%	similar
SK children walking or biking to school	39%*	41%	similar
General health	--	--	--
Self-rated health excellent/very good, ages 18+	61%	60%	similar
Self-rated mental health excellent/very good, ages 18+	83%	72%	similar
Life expectancy at birth - Males (years)	84.9	80.8	HIGHER
Life expectancy at birth - Females (years)	85.1	85.2	similar
Babies and toddlers	--	--	--
Birth rate per 1,000	8.9	10.6	similar
Teen pregnancy rate per 1,000	21.4	25.5	similar
Births to young mothers (ages 14-23)	9.4%	11.0%	similar
Births to older mothers (ages 35+)	23.9%	21.5%	similar
Preterm birth rate in singletons – updated	8.2%	6.3%	similar
Small-for-Gestational Age (SGA) rate – updated	11.3%	8.6%	similar
Large-for-Gestational Age (LGA) rate – updated	6.0%	11.6%	LOWER
Breastfeeding at hospital discharge rate	91.5%	88.9%	similar
Breastmilk only at hospital discharge rate	75.6%	78.3%	similar
Breastfeeding duration rate at 6 months	62%	53%	similar
18-month enhanced Well-Baby Visit – updated	53.8%	56.5%	similar

Brock Ridge Pickering (P6) Neighbourhood Profile - December 2017



Injury emergency department (ED) visits (rate per 1,000)	Neighbourhood	Durham Region	Compared to Durham Region
All Injuries ED visit rate	78.9	98.3	LOWER
Sports injuries ED visit rate, ages 10-14	27.2	42.2	LOWER
Motor vehicle traffic collision ED visit rate, ages 15-24	11.3	9.6	similar
Falls ED visit rate, ages 0-4	53.1	55.5	similar
Falls ED visit rate, ages 65+	35.5	57.3	LOWER
Police calls (rate per 10,000)	--	--	--
Police-reported domestic incidents	106.9	80.4	HIGHER
Police-reported domestic incidents with children present	5.5	4.1	similar
Health behaviours	--	--	--
Smoking rate, ages 18+	17%*	18%	similar
Obesity rate, ages 18+	23%*	20%	similar
Vegetables and fruit (5 or more servings per day), ages 18+	43%*	33%	similar
Alcohol use in excess of Canada's Low-Risk Alcohol Drinking Guidelines, ages 18+	NR	23%	--
High physical activity rate, ages 18-69	42%*	55%	similar
Immunization rates	--	--	--
School-required immunizations in ages 7-8	75.7%	75.4%	similar
School-required immunizations in ages 16-17	95.4%	90.7%	similar
Hepatitis B, Grade 7 students	79.4%	74.4%	similar
Meningococcal disease, Grade 7 students	95.5%	90.2%	similar
HPV, Grade 7 students	78.7%	66.4%	HIGHER
Flu shots, ages 18+	30%*	37%	similar
Cancer screening (rate per 100)	--	--	--
Mammography rate, females ages 52-74	60.7	63.4	similar
Pap test rate, females ages 23-70	65.9	68.4	LOWER
Overdue for colorectal screening, ages 50-74	45.2	42.0	HIGHER
Health care (rate per 100)	--	--	--
Population with primary care physician	94.3	95.1	similar
Residence ambulance call rate	3.3	3.9	LOWER
Residence ambulance call rate, ages 65+ years	12.0	15.5	LOWER

Brock Ridge Pickering (P6) Neighbourhood Profile - December 2017



Health conditions	Neighbourhood	Durham Region	Compared to Durham Region
Asthma ED visit rate (per 1,000), ages 0-14	13.0	10.3	similar
Asthma prevalence rate (per 100), ages 0-14	19.3	19.2	similar
Diabetes prevalence rate (per 100), ages 20+	13.0	10.4	HIGHER
Lung disease (COPD) prevalence rate (per 100), ages 35+	7.1	10.1	LOWER
Cardiovascular disease hospitalization rate (per 1,000), ages 45-64	11.3	9.8	similar
Infectious diseases (rate per 100,000)	--	--	--
Chlamydia incidence rate (per 1,000), females ages 15-24	24.3	17.2	HIGHER
Enteric diseases incidence	102.5	64.4	HIGHER
Influenza incidence	46.7	36.0	similar
Hepatitis C incidence	19.1	27.9	similar
Latent Tuberculosis Infection (LTBI) incidence	74.2	33.3	HIGHER

Profile Notes

For demographic and housing indicators, "LOWER" means at least 20% lower than Durham Region and "HIGHER" means at least 20% higher. For other indicators, "LOWER" or "HIGHER" means that the 95% confidence intervals do not overlap with Durham Region or that the critical difference is significantly different. Similar means that the Health Neighbourhood is similar to Durham Region for that indicator.

When "LOWER" or "HIGHER" is in blue, the indicator is neutral in terms of health. Green means that the Neighbourhood is doing better in terms of health than Durham Region and red indicates it is worse.

Estimates marked with an asterisk (*) have high variability and should be used with caution. Some estimates are not releasable due to small numbers.

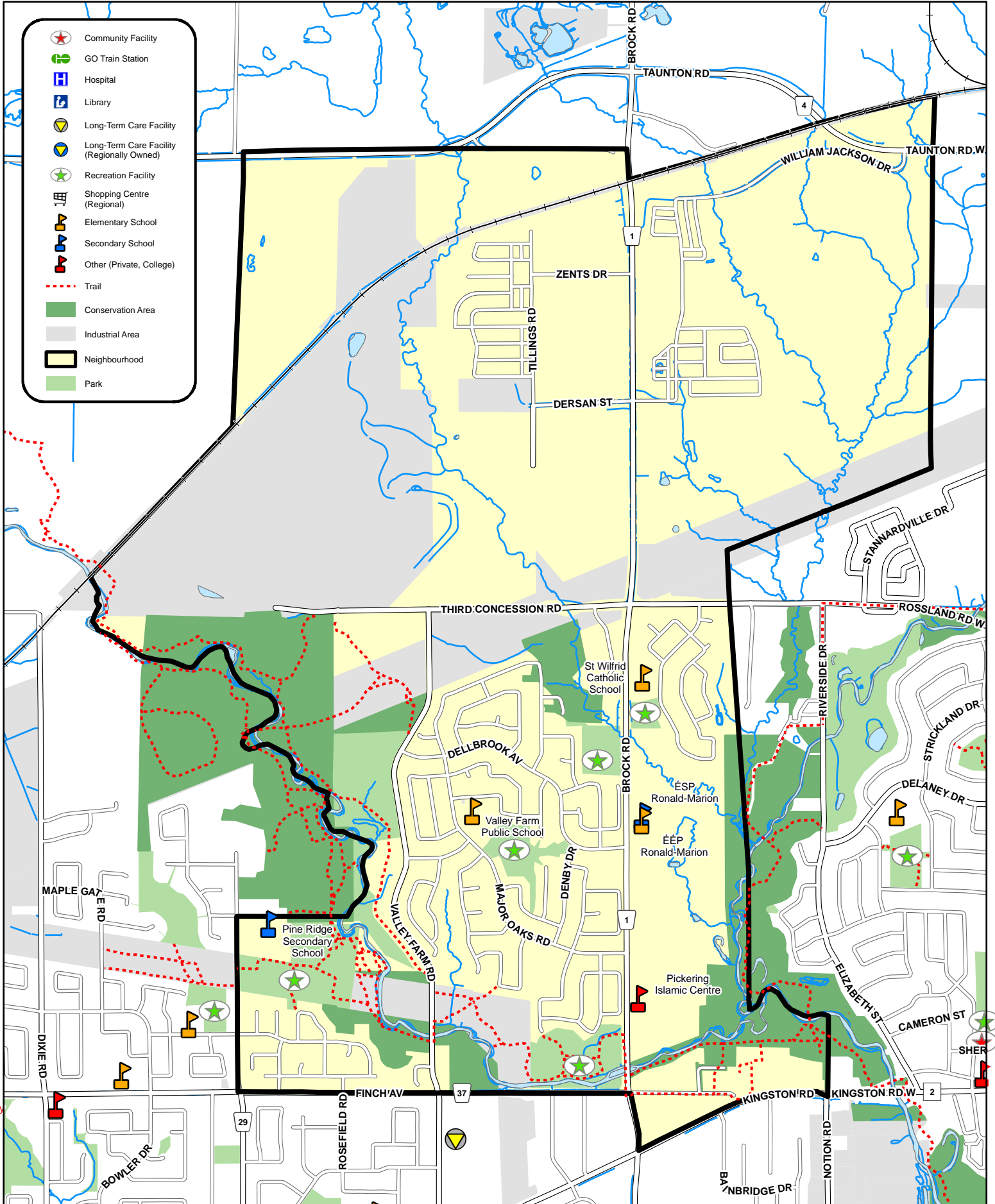
Release Date: December 2017

For more information, see the Indicator Summary or The Guide to Health Neighbourhoods at durham.ca/neighbourhoods.

If you require this information in an accessible format, contact 1-800-841-2729.



Brock Ridge Pickering Health Neighbourhood - Pickering 6 (P6)



This map has been produced from a variety of sources. The Region of Durham does not make any representations concerning the accuracy, likely results, or reliability of the use of the materials. The Region hereby disclaims all representations and warranties. Produced by Durham Region under License with the Ontario Ministry of Natural Resources, copyright Queen's Printer for Ontario, 2009. Assessment Parcels (c) MPAC and its suppliers. All rights reserved. NOT A PLAN OF SURVEY. Digital cartography by Corporate GIS Services, The Regional Municipality of Durham, January 2016.

