

Reproductive Health At A Glance – Births and Pregnancies, Durham Region

Last Updated: August 2016

Highlights

- Durham Region is similar to Ontario for many birth indicators; however, municipalities within Durham Region are often quite different from each other.
- In 2015, 6,575 babies were born to Durham Region mothers. The crude birth rate continued to decrease in Durham Region and Ontario, and is currently at its lowest level. The highest number of births occurred in Oshawa (1,726), followed by Ajax (1,390), and Whitby (1,256). The municipality with the highest crude birth rate in 2015 was Ajax at 11.8 births per 1,000 population and the lowest was Scugog at 6.3 births per 1,000 population.
- Women aged 30-34 in Durham Region had the highest birth rates, followed by women aged 25-29. Given that birth rates in women less than age 30 are decreasing and birth rates in those aged 30 and older are increasing, the age-specific fertility rate of women aged 35-39 may soon surpass those of women aged 25-29.
- The average age of childbirth for Durham Region women in 2015 was 30.8 years and has increased every year since 2007. This is an indication that women are delaying childbirth and having their children at older ages. In 2015, women having their first child were on average 29.2 years old. Average age of mother was highest in Whitby and Pickering, and lowest in Brock and Oshawa.
- The teenage pregnancy rate continued to decline in 2014 for both Durham Region and Ontario, and is currently at the lowest level for which data are available. The greatest decline in teenage pregnancy occurred between 2009 and 2014. There were 15.8 pregnancies for every 1,000 females aged 15-19 in Durham Region in 2014. This rate varied greatly by municipality, with the lowest rate in Whitby at 8.3 and the highest in Oshawa at 28.9. In general, teenage pregnancy is decreasing in all of the municipalities; however, the numbers vary greatly from year to year, particularly in municipalities with small populations.
- In 2015, about two-thirds (63%) of births to Durham Region mothers occurred in Durham Region hospitals, primarily Lakeridge Health Oshawa (38%) and Rouge Valley Ajax (22%). Large numbers of Durham Region women also delivered in Markham Stouffville Hospital (12%), Rouge Valley Centenary (6%), Mount Sinai Hospital (3%), and North York General Hospital (3%).
- Only a small number of women gave birth at home with a midwife – approximately 2% of Durham Region women (less than 150 annually).

Introduction

The Reproductive Health At A Glance – Births and Pregnancies report provides selected reproductive health indicators for Durham Region and its eight municipalities with comparisons to Ontario. This report includes reproductive health indicators relevant to public health programming, as outlined in the Ontario Public Health Standards (OPHS). The Ministry of Health and Long-Term Care published the OPHS in 2008, pursuant to Section 7 of the Health Protection and Promotion Act.

The primary data source for births and pregnancies is hospitalization data, either the newborn record (live births) or the maternal record (deliveries). A table showing home births uses data from BORN Ontario. Data were analyzed by residence, not where the event occurred. Rates and counts were suppressed when counts were less than 5. All births, including those with birth weights less than 500g, were included in this report.

This report contains the following charts and tables:

- Figure 1: Crude Birth Rate, Durham Region and Ontario, 2006-2015
- Figure 2: Age-Specific Birth Rates, Durham Region, 2011-2015
- Figure 3: Number of (Hospital) Births by Maternal Age, Durham Region, 2006-2015
- Figure 4: Average Age of Mother for All Births and First Births, Durham Region and Ontario, 2006-2015
- Figure 5: Teenage Pregnancy Rate, Durham Region and Ontario, 2006-2014
- Figure 6: Percentage of Births by Hospital Where Birth Occurred, Durham Region, 2015
- Table 1: Number of Live Births, Ontario, Durham Region and Municipalities, 2006-2015
- Table 2: Crude Birth Rate, Ontario, Durham Region and Municipalities, 2006-2015
- Table 3: Total Fertility Rate, Ontario, Durham Region and Municipalities, 2006-2015
- Table 4: Average Age of Mother for All Births, Ontario, Durham Region and Municipalities, 2006-2015
- Table 5: Average Age of Mother for First Births, Ontario, Durham Region and Municipalities, 2006-2015
- Table 6: Teen Pregnancy Rate, Ontario, Durham Region and Municipalities, 2006-2014
- Table 7: Number of Teen Pregnancies, Ontario, Durham Region and Municipalities, 2006-2014
- Table 8: Number of Births by Location of Birth, 2013-2015
- Table 9: Percentage of Births by Location of Birth, 2013-2015

Breakdowns of births and pregnancies data (Figures 1 to 6) are available for all eight municipalities in a corresponding report.

For more reports on reproductive health in Durham Region, please go to the [Health Statistics in Durham Region webpage](http://durham.ca/healthstats) found at durham.ca/healthstats.

Data Sources

Hospitalization Data

Hospitalization data collected by the Canadian Institute for Health Information (CIHI) were accessed August 2016 using IntelliHEALTH ONTARIO from the Ministry of Health and Long-Term Care. The newborn counts excluded home births, approximately 2% of live births for Durham Region. Births based on the newborn record were reported by calendar year of admission (i.e. birth year). Indicators based on age of mother used information from the mother's record of hospitalization (deliveries) and were based on calendar year of discharge. Deliveries include both live births and stillbirths and count multiple births as one delivery.

Teenage Pregnancy Data

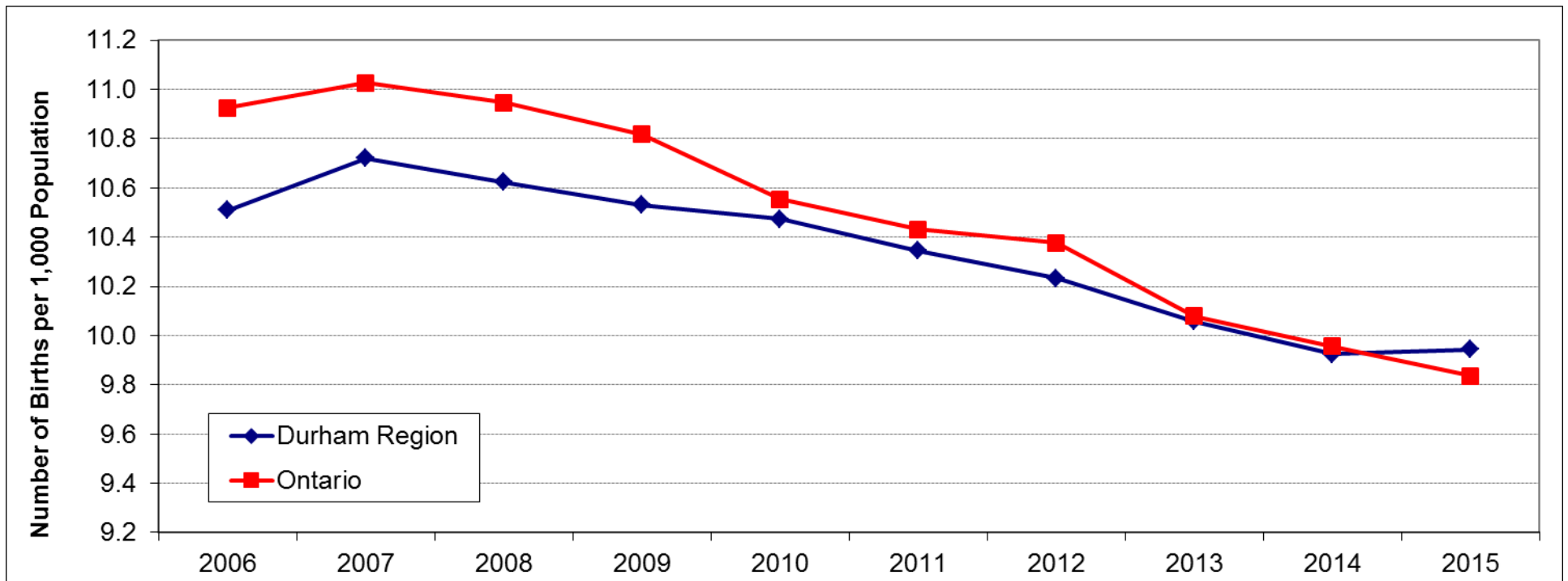
All teenage pregnancy data were accessed May 2016 through IntelliHEALTH ONTARIO from the Ministry of Health and Long-Term Care. Teenage pregnancies included the number of deliveries occurring in hospital among females aged 15-19 years (live births and stillbirths), along with the number of therapeutic abortions (TAs). TA data included TAs occurring in hospital, clinics and private physician offices by combining hospital and medical services (OHIP) data. Age of mother was recorded at the time of event: birth, stillbirth or therapeutic abortion. A female who became pregnant when 19 but who delivered at age 20 was not counted as a teenage pregnancy. Residence of mother was recorded at time of event. Certain areas may experience inflated teenage pregnancy rates due to pregnant teens moving to areas that offer good support services and affordable housing. Medically/pharmacologically-induced abortions, those induced by emergency contraceptive pills such as RU 486 or methotrexate (usually reserved for ectopic pregnancies), were not captured in the TA data.

BORN Ontario Data

Home birth data were accessed August 2016 through the Better Outcome Registry and Network (BORN) Information System, a birth registry that covers all births in Ontario including those occurring at home and in hospital. Complete Ontario data is available only as of 2013.

For more information or if you require this information in an accessible format, please contact Durham Health Connection Line at 905-666-6241 or 1-800-841-2729.

Figure 1: Crude Birth Rates, Durham Region and Ontario, 2006-2015



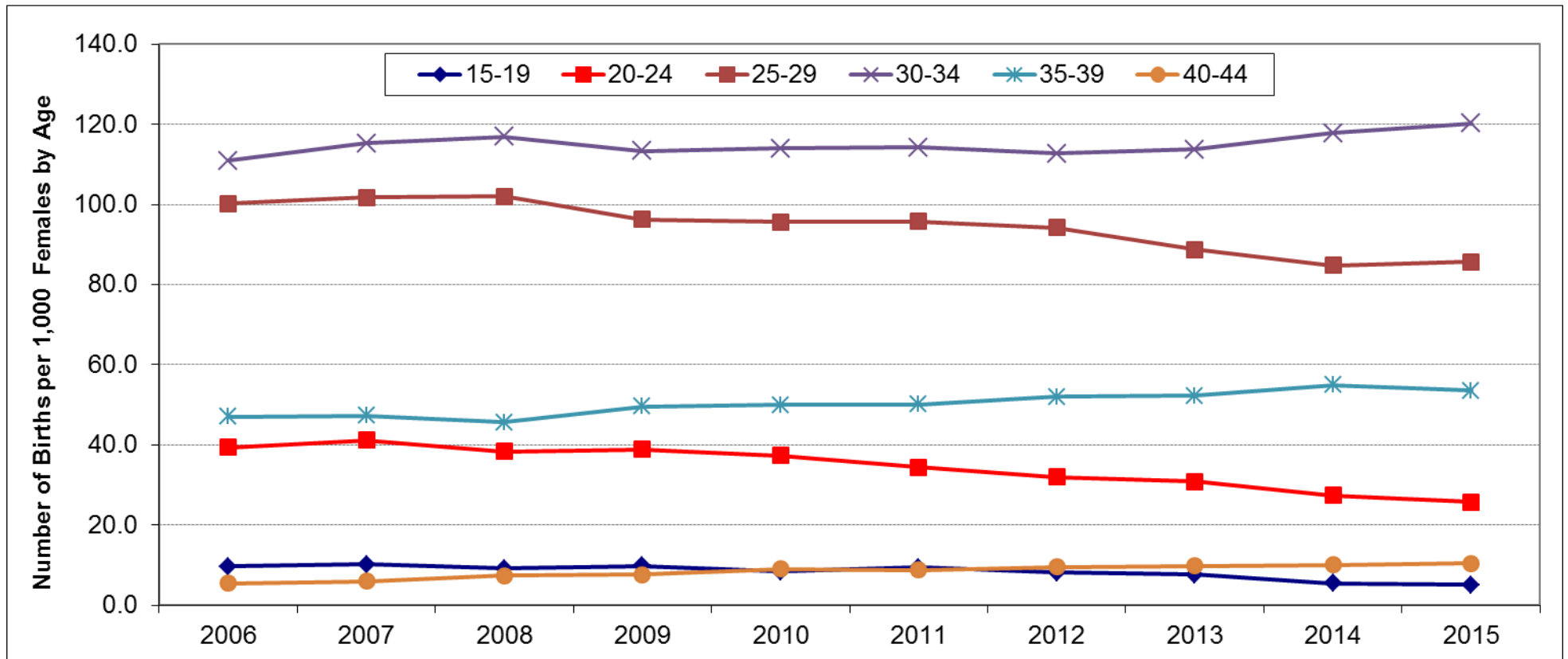
Geographical Area	2006	2007	2008	2009	2010	2011	2012	2013	2014	2015
Durham Region	10.9	11.0	10.9	10.8	10.6	10.4	10.4	10.1	10.0	9.8
Ontario	10.9	11.0	10.9	10.8	10.6	10.4	10.4	9.9	9.8	9.7

Data Source: Hospital In-patient Discharges and Ontario Population Estimates, 2006-2015, Ontario Ministry of Health and Long-Term Care, IntelliHEALTH ONTARIO.

Definition: The crude birth rate is the number of live births (newborns born in hospital) per 1,000 total population.

Comments: The crude birth rate is an overall indicator of fertility in a population. It is influenced by the age structure of the population and is generally higher where there are more women of childbearing age, particularly ages 25-35. Note that the graph axis does not start at zero. The crude birth rate has decreased steadily in both Durham Region and Ontario, and is currently at its lowest level.

Figure 2: Age-Specific Birth Rates (Hospital Deliveries), Durham Region, 2006-2015



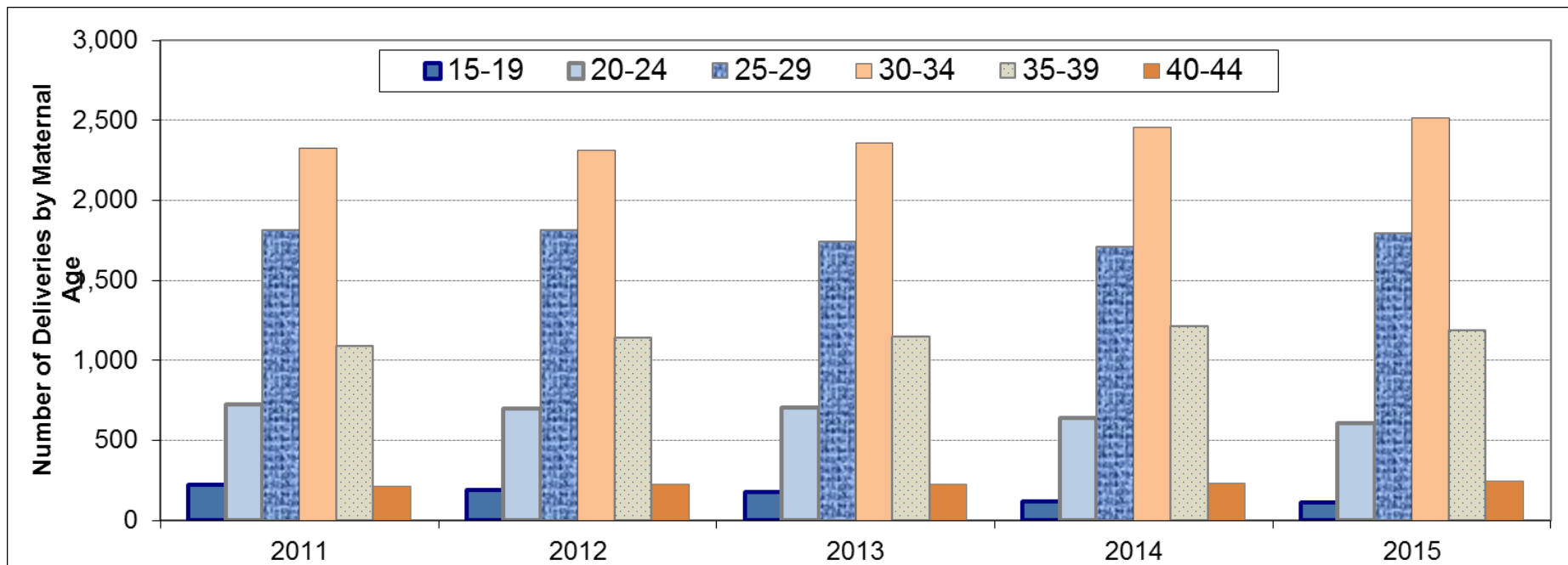
Maternal Age	2006	2007	2008	2009	2010	2011	2012	2013	2014	2015
15-19	9.7	10.1	9.2	9.8	8.4	9.4	8.2	7.7	5.4	5.1
20-24	39.5	41.2	38.4	38.9	37.3	34.5	32.0	30.8	27.4	25.7
25-29	100.2	101.8	102.0	96.2	95.6	95.8	94.2	88.7	84.8	85.7
30-34	110.9	115.3	117.0	113.3	114.0	114.3	112.7	113.7	117.8	120.2
35-39	47.1	47.3	45.7	49.6	50.0	50.1	52.0	52.3	55.0	53.6
40-44	5.4	6.0	7.4	7.7	9.1	8.8	9.6	9.8	10.0	10.5

Data Source: Hospital In-patient Discharges and Ontario Population Estimates, 2006-2015, Ontario Ministry of Health and Long-Term Care, IntelliHEALTH ONTARIO.

Definition: The Age-Specific Birth Rate as measured through hospital deliveries is the number of in-hospital deliveries of live births and stillbirths among women in a given age group per 1,000 population of women in that age group.

Comments: Birth rates have increased in women aged 30 years and older and decreased in younger women. Birth rates were highest in women aged 30-34.

Figure 3: Number of Hospital Deliveries by Maternal Age, Durham Region, 2011-2015

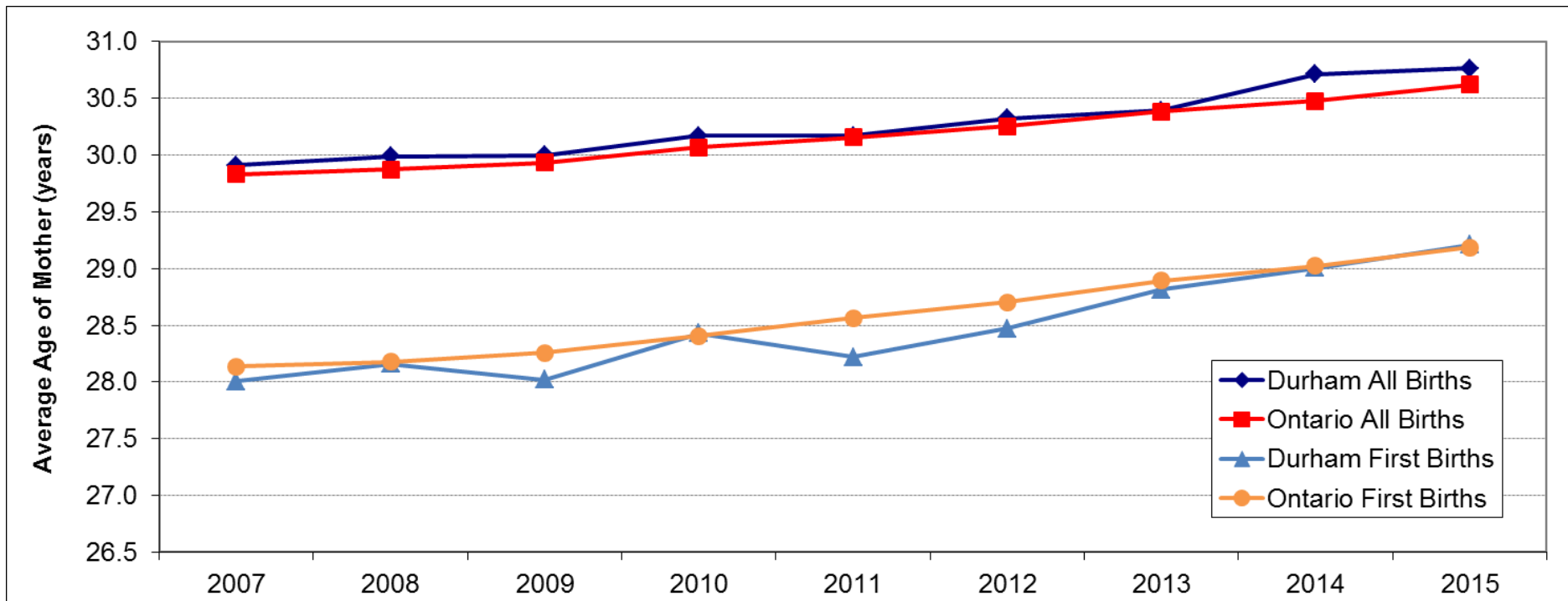


Number of Deliveries by Maternal Age	2011	2012	2013	2014	2015
15-19	223	192	176	122	111
20-24	727	703	706	643	607
25-29	1,813	1,813	1,738	1,708	1,795
30-34	2,328	2,316	2,360	2,459	2,516
35-39	1,091	1,141	1,149	1,213	1,189
40-44	211	225	229	233	244
Total Deliveries All Ages (Ages 10-59)	6,409	6,405	6,365	6,396	6,480

Total Number of Females by Age	2011	2012	2013	2014	2015
15-19	23,816	23,430	22,918	22,426	21,961
20-24	21,098	21,958	22,887	23,481	23,552
25-29	18,930	19,246	19,590	20,200	20,601
30-34	20,370	20,551	20,756	20,897	21,022
40-44	21,793	21,958	21,956	22,079	22,192

Data Source: Hospital In-patient Discharges and Ontario Population Estimates, 2011-2015, Ontario Ministry of Health and Long-Term Care, IntelliHEALTH ONTARIO.

Figure 4: Average Age of Mother for All Births and First Births, Durham Region and Ontario, 2007-2015



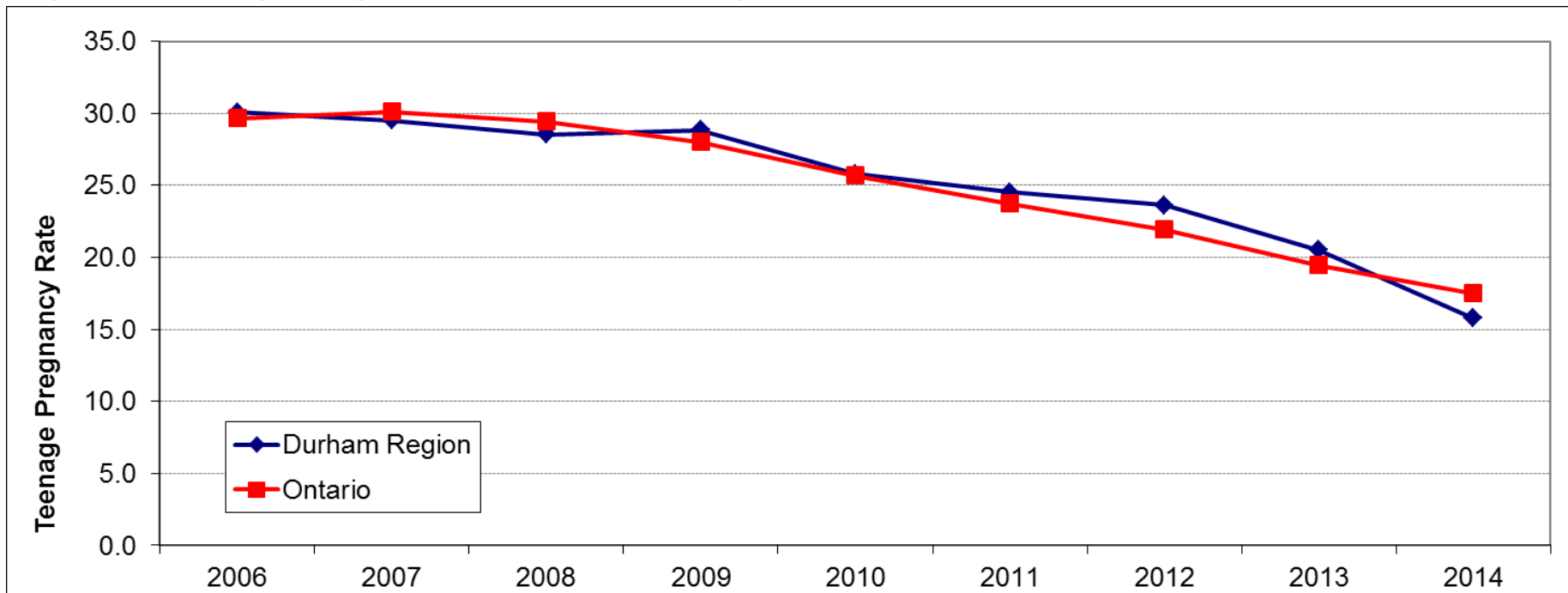
Average Age for All Births	2007	2008	2009	2010	2011	2012	2013	2014	2015
Durham Region	29.9	30.0	30.0	30.2	30.2	30.3	30.4	30.7	30.8
Ontario	29.8	29.9	29.9	30.1	30.2	30.3	30.4	30.5	30.6
Average Age for First Births	2007	2008	2009	2010	2011	2012	2013	2014	2015
Durham Region	28.0	28.2	28.0	28.4	28.2	28.5	28.8	29.0	29.2
Ontario	28.1	28.2	28.3	28.4	28.6	28.7	28.9	29.0	29.2

Data Source: Hospital In-patient Discharges 2007-2015, Ontario Ministry of Health and Long-Term Care, intelliHEALTH ONTARIO.

Definitions: The average age of mother is the mean age of mothers who are delivering in hospital in the corresponding year. The average age for first birth is the mean age of mothers who are delivering their first child.

Comments: Women are delaying childbirth and having their babies at older ages. The average age at which women are giving birth has steadily increased in both Durham Region and Ontario. Note that the graph axis does not start at zero. Average age of mother is similar in Durham Region and Ontario.

Figure 5: Teenage Pregnancy Rate, Durham Region and Ontario, 2006-2014



Teenage Pregnancy Rate	2006	2007	2008	2009	2010	2011	2012	2013	2014
Durham Region	30.1	29.5	28.5	28.8	25.8	24.5	23.6	20.5	15.8
Ontario	29.6	30.1	29.4	28.0	25.7	23.7	21.9	19.5	17.5

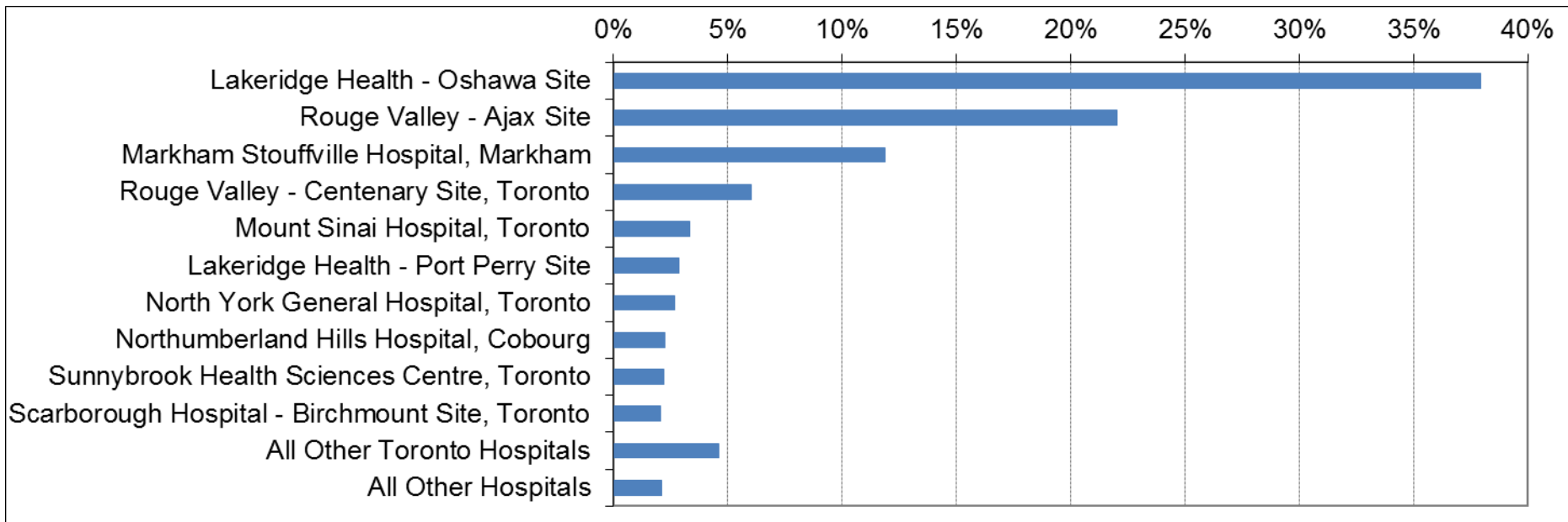
Number of Teen Pregnancies	2006	2007	2008	2009	2010	2011	2012	2013	2014
Durham Region	671	675	671	687	615	584	553	470	354
Ontario	12,613	12,951	12,815	12,252	11,248	10,392	9,495	8,294	7,329

Data Source: Hospital Data & Medical Services Data & Population Estimates 2006-2014, Ministry of Health and Long-Term Care, IntelliHEALTH ONTARIO.

Definition: The Teenage Pregnancy Rate is the number of in-hospital deliveries of live births and stillbirths plus the number of therapeutic abortions among females aged 15-19 years per 1,000 females aged 15-19.

Comments: Teenage pregnancy rates have decreased in Durham Region and Ontario, as in Canada and most developed countries.

Figure 6: Percentage of Births by Hospital Where Birth Occurred, Durham Region, 2015



Top 10 birth hospitals for Durham Region mothers	Number	Percentage
1. Lakeridge Health – Oshawa Site	2,495	38%
2. Rouge Valley – Ajax Site	1,449	22%
3. Markham Stouffville Hospital, Markham	781	12%
4. Rouge Valley – Centenary Site, Toronto	397	6%
5. Mount Sinai Hospital, Toronto	220	3%
6. Lakeridge Health – Port Perry Site	189	3%
7. North York General Hospital, Toronto	176	3%
8. Northumberland Hills Hospital, Cobourg	147	2%
9. Sunnybrook Health Sciences Centre, Toronto	145	2%
10. Scarborough Hospital – Birchmount Site, Toronto	136	2%
All Other Toronto Hospitals	302	5%
All Other Hospitals	138	2%
Total Births	6,575	100%

Data Source: Hospital In-patient Discharges 2015, Ontario Ministry of Health and Long-Term Care, IntelliHEALTH ONTARIO.

Table 1: Number of Live Births, Ontario, Durham Region and Municipalities, 2006-2015

Geographical Area	2006	2007	2008	2009	2010	2011	2012	2013	2014	2015
Ontario	138,317	140,744	141,008	140,609	138,616	138,344	139,138	136,589	136,173	135,665
Durham Region	6,140	6,367	6,402	6,424	6,484	6,484	6,509	6,488	6,483	6,551
Pickering	800	802	805	781	762	775	742	820	825	843
Ajax	1,200	1,288	1,367	1,308	1,358	1,348	1,403	1,322	1,303	1,388
Whitby	1,422	1,418	1,402	1,416	1,376	1,304	1,320	1,308	1,238	1,252
Oshawa	1,452	1,604	1,552	1,597	1,656	1,761	1,707	1,645	1,727	1,718
Clarington	844	818	849	900	862	901	925	986	969	955
Scugog	151	183	172	180	175	151	136	148	157	149
Uxbridge	159	146	158	142	168	138	161	153	146	153
Brock	112	108	97	100	127	106	115	106	118	93

Data Source: Hospital In-patient Discharges, 2006-2015, Ontario Ministry of Health and Long-Term Care, IntelliHEALTH ONTARIO.

Table 2: Crude Birth Rate, Ontario, Durham Region and Municipalities, 2006-2015

Geographical Area	2006	2007	2008	2009	2010	2011	2012	2013	2014	2015
Ontario	10.9	11.0	10.9	10.8	10.6	10.4	10.4	10.1	10.0	9.8
Durham Region	10.5	10.7	10.6	10.5	10.5	10.3	10.2	10.1	9.9	9.9
Pickering	8.8	8.8	8.8	8.5	8.3	8.5	8.0	8.7	8.6	8.7
Ajax	12.7	13.1	13.4	12.4	12.4	11.9	12.2	11.4	11.1	11.7
Whitby	12.3	12.0	11.7	11.6	11.1	10.4	10.4	10.1	9.5	9.5
Oshawa	9.9	10.8	10.3	10.6	10.8	11.4	10.9	10.3	10.7	10.5
Clarington	10.4	9.9	10.1	10.6	10.0	10.3	10.5	11.0	10.7	10.4
Scugog	6.8	8.2	7.7	8.1	7.9	6.8	6.0	6.4	6.7	6.2
Uxbridge	8.0	7.2	7.7	6.9	8.0	6.5	7.5	7.0	6.6	6.8
Brock	9.1	8.8	8.0	8.4	10.8	9.1	9.7	8.8	9.6	7.4

Data Source: Hospital In-patient Discharges and Ontario Population Estimates, 2006-2015, Ontario Ministry of Health and Long-Term Care, IntelliHEALTH ONTARIO.

Definition: The Crude Birth Rate is the number of live births (newborns born in hospital) per 1,000 total population.

Table 3: Total Fertility Rate, Ontario, Durham Region and Municipalities, 2006-2015

Geographical Area	2006	2007	2008	2009	2010	2011	2012	2013	2014	2015
Ontario	1.6	1.6	1.6	1.6	1.5	1.5	1.5	1.5	1.4	1.4
Durham Region	1.6	1.6	1.6	1.6	1.6	1.6	1.5	1.5	1.5	1.5
Pickering	1.4	1.4	1.5	1.4	1.4	1.4	1.3	1.5	1.4	1.6
Ajax	1.7	1.8	1.8	1.6	1.6	1.6	1.6	1.5	1.5	1.5
Whitby	1.7	1.7	1.6	1.6	1.6	1.5	1.5	1.5	1.4	1.6
Oshawa	1.4	1.6	1.5	1.5	1.6	1.7	1.6	1.5	1.6	1.6
Clarington	1.6	1.5	1.6	1.6	1.5	1.5	1.6	1.7	1.6	1.5
Scugog	1.4	1.6	1.6	1.8	1.7	1.5	1.3	1.4	1.4	1.3
Uxbridge	1.5	1.5	1.6	1.5	1.8	1.4	1.6	1.6	1.5	1.5
Brock	1.8	1.7	1.6	1.6	2.1	1.8	1.9	1.7	1.9	1.4

Data Source: Hospital In-patient Discharges and Ontario Population Estimates, 2006-2015, Ontario Ministry of Health and Long-Term Care, IntelliHEALTH ONTARIO.

Definition: The Total Fertility Rate (TFR) is the average number of children that would be born per woman if all women lived to the end of their childbearing years and bore children according to the age-specific fertility rates of this area and time period.

Comments: The TFR tends to be lower in more developed countries and decreases with higher levels of education in females, higher participation rates for females in the labour force, and greater access to birth control. A TFR of 2.1 is generally the replacement level for a population to maintain its numbers without immigration. Fertility levels in Durham Region and Ontario are below replacement level which means that the populations would be decreasing if not for immigration.

Table 4: Average Age of Mother for All Births, Ontario, Durham Region and Municipalities, 2007-2015

Geographical Area	2007	2008	2009	2010	2011	2012	2013	2014	2015
Ontario	29.8	29.9	29.9	30.1	30.2	30.3	30.4	30.5	30.6
Durham Region	29.9	30.0	30.0	30.2	30.2	30.3	30.4	30.7	30.8
Pickering	30.8	30.6	30.8	31.0	31.0	31.2	31.4	31.3	31.7
Ajax	30.6	30.7	30.9	30.8	30.9	31.1	31.1	31.6	31.5
Whitby	31.0	31.0	31.2	31.3	31.3	31.5	31.4	31.7	31.7
Oshawa	28.2	28.3	28.3	28.5	28.6	28.7	28.9	29.4	29.4
Clarington	29.5	29.8	29.3	29.9	29.8	29.9	30.1	30.2	30.4
Scugog	29.8	29.2	29.8	29.9	29.5	30.2	30.6	31.0	30.5
Uxbridge	30.7	31.4	31.0	31.2	30.7	30.7	30.5	30.6	30.7
Brock	29.1	29.1	28.1	28.5	28.5	28.0	28.0	29.9	28.6

Data Source: Hospital In-patient Discharges, 2007-2015, Ontario Ministry of Health and Long-Term Care, IntelliHEALTH ONTARIO.

Table 5: Average Age of Mother for First Births, Ontario, Durham Region and Municipalities, 2007-2015

Geographical Area	2007	2008	2009	2010	2011	2012	2013	2014	2015
Ontario	28.1	28.2	28.3	28.4	28.6	28.7	28.9	29.0	29.2
Durham Region	28.0	28.2	28.0	28.4	28.2	28.5	28.8	29.0	29.2
Pickering	28.5	28.5	28.7	29.3	29.1	29.4	29.8	29.9	30.1
Ajax	28.7	29.0	29.3	29.3	28.9	29.3	29.6	29.8	29.7
Whitby	29.4	29.4	29.2	29.4	29.6	29.9	29.7	30.3	30.4
Oshawa	26.3	26.6	26.2	26.6	26.7	26.6	27.2	27.4	27.8
Clarington	27.4	27.9	27.6	28.6	28.0	28.1	28.6	28.6	28.9
Scugog	28.3	26.7	27.6	28.6	27.9	28.9	29.3	29.1	28.9
Uxbridge	28.8	29.0	29.4	29.6	27.7	28.9	28.9	28.8	29.5
Brock	25.5	27.0	26.1	26.3	26.9	26.6	26.3	28.1	27.5

Data Source: Hospital In-patient Discharges, 2007-2015, Ontario Ministry of Health and Long-Term Care, IntelliHEALTH ONTARIO.

Table 6: Teenage Pregnancy Rate, Ontario, Durham Region and Municipalities, 2006-2014

Geographical Area	2006	2007	2008	2009	2010	2011	2012	2013	2014
Ontario	29.6	30.1	29.4	28.0	25.7	23.7	21.9	19.5	17.5
Durham Region	30.1	29.5	28.5	28.8	25.8	24.5	23.6	20.5	15.8
Pickering	28.1	30.4	26.3	24.1	21.5	16.5	16.5	15.2	9.4
Ajax	24.9	27.1	30.7	23.6	25.1	24.4	20.6	17.9	13.4
Whitby	25.1	19.3	21.1	21.6	16.6	18.7	16.5	14.1	8.3
Oshawa	48.3	45.7	45.4	50.6	47.3	45.1	40.5	35.2	28.9
Clarington	23.1	23.2	16.7	20.2	17.2	18.1	21.9	20.0	17.7
Scugog	15.0	18.5	25.6	20.4	16.8	13.0	17.2	12.1	11.0
Uxbridge	20.4	15.0	21.0	14.5	12.0	7.0	16.6	8.5	12.4
Brock	25.3	48.5	10.8	44.8	19.9	18.3	31.8	32.5	22.1

Data Source: Hospital Data & Medical Services Data & Population Estimates 2006-2014, Ministry of Health and Long-Term Care, IntelliHEALTH ONTARIO.

Definition: The Teenage Pregnancy Rate is the number of in-hospital deliveries of live births and stillbirths plus the number of therapeutic abortions among females aged 15-19 years per 1,000 females aged 15-19.

Table 7: Number of Teenage Pregnancies, Ontario, Durham Region and Municipalities, 2006-2014

Geographical Area	2006	2007	2008	2009	2010	2011	2012	2013	2014
Ontario	12,613	12,951	12,815	12,252	11,248	10,392	9,495	8,294	7,329
Durham Region	671	675	671	687	615	584	553	470	354
Pickering	107	116	101	91	80	60	59	53	32
Ajax	97	111	132	105	113	112	93	79	58
Whitby	110	87	99	104	80	91	79	66	38
Oshawa	247	238	241	270	251	235	208	177	142
Clarington	69	72	54	68	60	63	75	67	58
Scugog	13	16	22	17	13	10	13	9	8
Uxbridge	16	12	17	12	10	6	14	7	10
Brock	12	23	5	20	8	7	12	12	8

Data Source: Hospital Data & Medical Services Data & Population Estimates 2006-2014, Ministry of Health and Long-Term Care, IntelliHEALTH ONTARIO.

Table 8: Number of Births by Location of Birth, 2013-2015

Location of Birth	Durham Region 2013	Durham Region 2014	Durham Region 2015	Ontario 2013	Ontario 2014	Ontario 2015
Home	120	141	123	3,611	3,763	3,717
Hospital	6,312	6,304	6,333	133,256	132,334	131,557
Other	11	25	26	473	873	1,187
Total number of women who gave birth	6,443	6,470	6,482	137,340	136,970	136,461

Data Source: BORN Ontario Information System, 2015, tabulated August 3, 2016.

Comments: A small number of women choose to give birth at home under the care of a registered midwife. Registered midwives also deliver babies in hospitals. The “other” category includes birth centre, nursing station, location such as vehicle, and missing data. There may be discrepancies in the number of births between BORN Ontario and hospitalization data as some hospitals do not have their complete data acknowledged in the BORN Ontario Information System.

Table 9: Percentage of Births by Location of Birth, 2013-2015

Location of Birth	Durham Region 2013	Durham Region 2014	Durham Region 2015	Ontario 2013	Ontario 2014	Ontario 2015
Home	1.9%	2.2%	1.9%	2.6%	2.7%	2.7%
Hospital	98.0%	97.4%	97.7%	97.0%	96.6%	96.4%
Other	0.2%	0.4%	0.4%	0.3%	0.6%	0.9%
Total Percentage	100.0%	100.0%	100.0%	100.0%	100.0%	100.0%

Data Source: BORN Ontario Information System, 2015, tabulated August 3, 2016.

Comments: The majority of births in Ontario occur in hospital. The percentage of home births has been steady at just under 3% in Ontario and approximately 2% in Durham Region. There may be discrepancies in the number of births between BORN Ontario and hospitalization data as some hospitals do not have their complete data acknowledged in the BORN Ontario Information System.