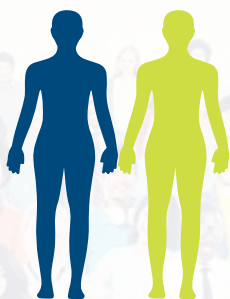
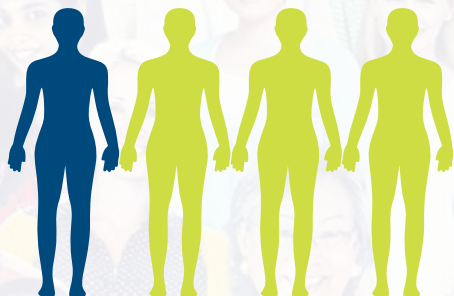


Cancer *at a glance*

June 2017



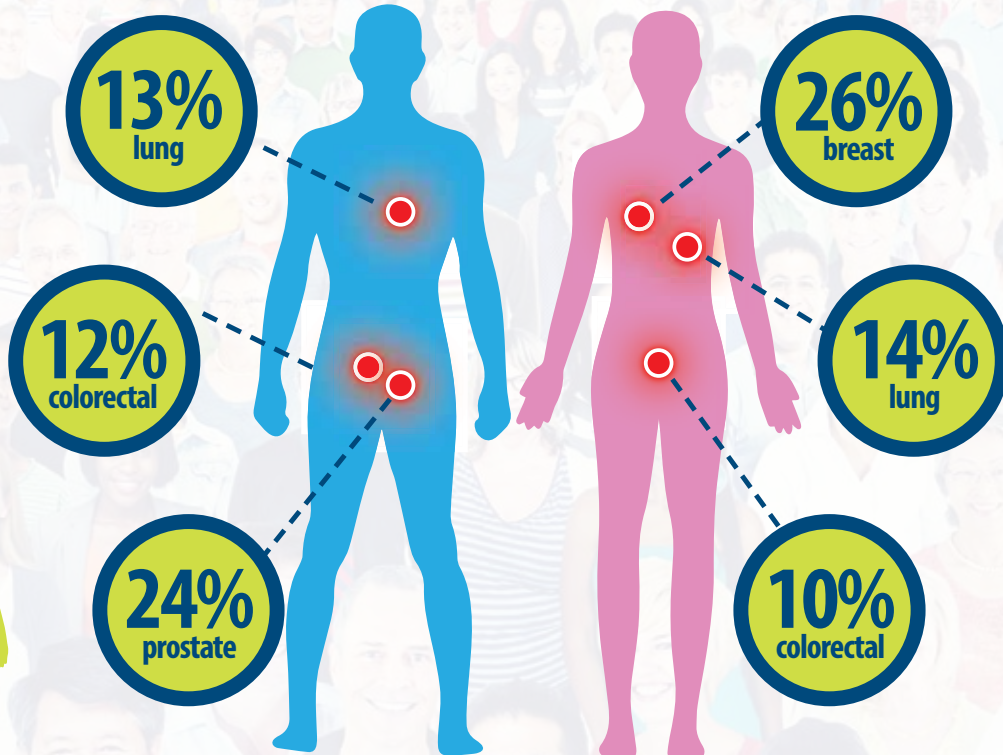
1 in 2
Ontarians will develop
cancer in their lifetime



1 in 4
Ontarians will die from cancer

Most common
cancers in
Durham Region
males
(2010-2012)

Most common
cancers in
Durham Region
females
(2010-2012)



Top 3 made up
half of cancers
diagnosed in
Durham Region
males

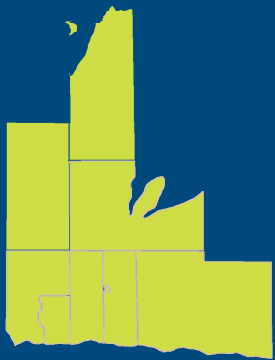
Top 3 made up
half of cancers
diagnosed in
Durham Region
females

3,500

cancer cases were diagnosed in
Durham Region residents in 2012

Durham Region compared with Ontario

Overall cancer incidence significantly higher in Durham Region than Ontario for males, females and both sexes combined in 2010-2012



Durham Region incidence higher than Ontario

Males - Overall cancer, Cancer in ages 50+ years

Females - Overall cancer, Cancer in ages 15-29, 30-49 & 50+, Lung cancer, Bladder cancer, Thyroid cancer

Both Sexes Combined - Overall cancer, Cancer in ages 15-29, 30-49 & 50+, Lung cancer, Thyroid cancer, Melanoma

We can prevent some types of cancer by:



Eating a diet rich in vegetables and fruits



Being physically active



Not smoking



Reducing alcohol consumption



Maintaining a healthy weight



Vaccinating against infections such as human papillomavirus (HPV) and hepatitis B



Reducing exposure to carcinogens in the workplace



Screening for breast, cervical and colorectal cancers

Trends in Durham Region (from 1998 to 2012)

Males



Increased:

- Thyroid cancer
- Non-Hodgkin lymphoma
- Melanoma

Decreased:

- Cancer in ages 50+
- Prostate cancer

Females



Increased:

- Overall cancer
- Cancer in ages 15-29 & 30-49
- Lung cancer
- Thyroid cancer

Both Sexes Combined



Increased:

- Cancer in ages 15-29 & 30-49
- Thyroid cancer
- Non-Hodgkin lymphoma
- Melanoma

Source: Durham Region Health Department, Cancer At A Glance, June 2017. See: durham.ca/healthstats



HEALTH DEPARTMENT

Durham Health Connection Line
1-800-841-2729 or 905-668-2020

durham.ca

If you require this information in an accessible format, contact 1-800-841-2729

