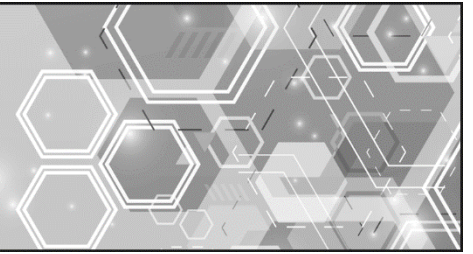




Durham Region Health Department **Facts about...**



COVID-19 Outbreak in Schools

What is a COVID-19 Outbreak in a school?

An outbreak in a school is defined as **two** or more lab-confirmed COVID-19 cases in students and/or staff (or other visitors) in a school where at least one case could have reasonably acquired their infection* in the school (including transportation and before/after school care).

*Examples of reasonably having acquired infection in school include:

- No obvious source of infection outside of the school setting; **OR**
- Known exposure in the school setting.

How is a COVID-19 outbreak managed in a school?

Your school is working closely with Durham Region Health Department (DRHD) to ensure all necessary health and safety measures are in place to protect the entire school community. Depending on the assessment conducted by DRHD, there may be school closures ranging from a single classroom up to a full school closure. School will remain open if there is **NO** evidence of potential widespread transmission within the school.

Additional measures during an outbreak may include:

- Outbreak signage at entrances and affected area.
- Informing outside agencies that use the school/daycare of the outbreak.
- Only allowing essential visitors into the school.
- Further minimizing the movement of staff between cohorts.
- Limiting student activities to their required cohorts and discontinuing extra-curricular activities, as much as possible.
- Restricting all staff from working in other schools.
- Reinforce with staff, students and their family's adherence to the social bubble (size based on current provincial recommendations).

How will I know if my child can attend school during a COVID-19 Outbreak?

Your school will notify you if your child's classroom or school will be closed. Anyone identified as a close contact of the positive case of COVID-19 will be advised to leave school and to self-isolate at home. DRHD will follow-up with all identified contacts for further assessment and provide recommendations for testing.

905-668-2020 or 1-800-841-2729 | durham.ca/health

If you require this information in an accessible format, contact 1-800-841-2729.



How do I know when the COVID-19 Outbreak is over?

DRHD and your school public health nurse will work closely with your school to manage the outbreak. The school will be resolved from the outbreak when:

- It has been at least 14 days from the last outbreak associated positive case; **and**
- No further symptomatic individuals have pending COVID-19 test results.

How can I prevent COVID-19

- Physically distance from others by keeping 2 metres away as much as possible.
- Stay home when you are sick.
- Students wear non-medical masks or face coverings as appropriate.
- Clean your hands often with soap and water or use hand sanitizer.
- After handling nose and throat secretions, (e.g. throwing out used facial tissues) wash your hands.
- Cough and sneeze into a tissue or your sleeve.
- Avoid touching your face.
- Do not share water bottles, eating utensils, toothbrushes, toys or anything else that has been in contact with saliva, nose or throat secretions.
- Keep common surfaces clean and disinfect surfaces that are high-touch areas.
- Avoid close contact with anyone showing symptoms of respiratory illness such as coughing and sneezing.
- Self screen children daily before school entry.

As a reminder, please monitor your child/children for symptoms of illness and do not send your child/children to school if they are ill.

Common COVID-19 symptoms include fever (temperature of 37.8 degrees Celsius or greater), new or worsening cough and shortness of breath. Other symptoms of COVID-19 can include sore throat, difficulty swallowing, changes to sense of taste and/or smell, nausea/vomiting, diarrhea, abdominal pain and runny nose, or nasal congestion (not caused by seasonal allergies).

Atypical symptoms of COVID-19 should be considered, particularly in children, older persons, and people living with a developmental disability. Atypical symptoms can include unexplained fatigue, body aches, delirium, unexplained or increased number of falls, acute functional decline, exacerbation of chronic conditions, chills, headaches, croup, conjunctivitis, and multisystem inflammatory vasculitis in children.

Symptoms of multisystem inflammatory vasculitis in children may include persistent fever, abdominal pain, conjunctivitis, nausea, vomiting, diarrhea and rash.

If you have questions or you suspect your child/children have COVID-19 please call Durham Health Connection Line at 905-668-2020 or 1-800-841-2729.

- For more information about COVID-19 please visit www.durham.ca/novelcoronavirus
- For more information about school-reopening information please visit: www.durham.ca/schoolsreopening

September 29, 2020

