



Durham Region Influenza Bulletin: 2019/20 Influenza Season

Surveillance Week 36 (September 1, 2019 to September 7, 2019)

Table 1: Assessment of influenza activity in Durham Region

Measure	Assessment of measure compared to previous week (Lower, Similar, Higher)	Reasoning behind assessment
Laboratory confirmed cases	Similar	0 new influenza cases reported (1) with onset date in or before week 36 compared to 0 cases in week 35.
Respiratory outbreaks in institutions (2)	Lower	0 new respiratory outbreaks in institutions reported with onset in or before week 36 compared to 1 respiratory outbreak reported in week 35 (isolate pending).
Child absenteeism due to illness reported by sentinel child care centres	Similar	Rate of 1.4% (based on 11 centres) compared to rate of 1.0% (based on 4 centres) for previous week. Similar to the average rate for the previous 3 years (0.9%). 1 new respiratory outbreak declared in child care centres with onset in or before week 36 compared to 0 outbreaks reported in previous week.
Elementary school absenteeism due to illness reported by selected Durham Region school boards (3)	N/A ⁶	Rate of 0.6% (based on 1 of 3 school boards). Schools were closed during week 35. Similar to the rate for the previous 5 school years (0.7%). 0 sentinel schools reported >10% absenteeism.
Emergency department visits for fever/influenza-like illness (ILI) (4)	Similar	1.5% of emergency department visits in week 36 were for fever/ILI compared to 1.8% in week 35. Similar to the average rate for week 36 for the last 5 seasons of 1.9%.
Overall assessment (5)	Influenza activity in Durham Region is similar to the previous week and is low.	--

1. Cases appear in the table on the next page based on episode week, which is an estimate of the onset week of disease and may differ from reported week.
2. Institutions include Long-Term Care Homes, Hospitals and Retirement Homes. Public Health Ontario made changes to laboratory testing of respiratory specimens this season and as a result, testing will no longer detect coronavirus, parainfluenza virus 4 or entero/rhinoviruses.
3. Includes all elementary schools located in Durham Region from Durham District School Board, Kawartha Pine Ridge District School Board, and Peterborough Victoria Northumberland and Clarington Catholic District School Board.
4. Fever/ILI category includes visits for undifferentiated fever, chills, myalgias, joint pain, and flu like illness.
5. Overall assessment based on: 5 or fewer laboratory confirmed cases and no influenza outbreaks = low; 6-12 laboratory confirmed cases or 1 influenza outbreak = moderate; >12 laboratory confirmed cases or 2 or more influenza outbreaks = high. Influenza activity is considered lower or higher when the difference between the number of laboratory confirmed cases from one week to the next is 3 or more or when the difference between influenza outbreaks is 1 or more.
6. N/A indicates that comparison was not possible.

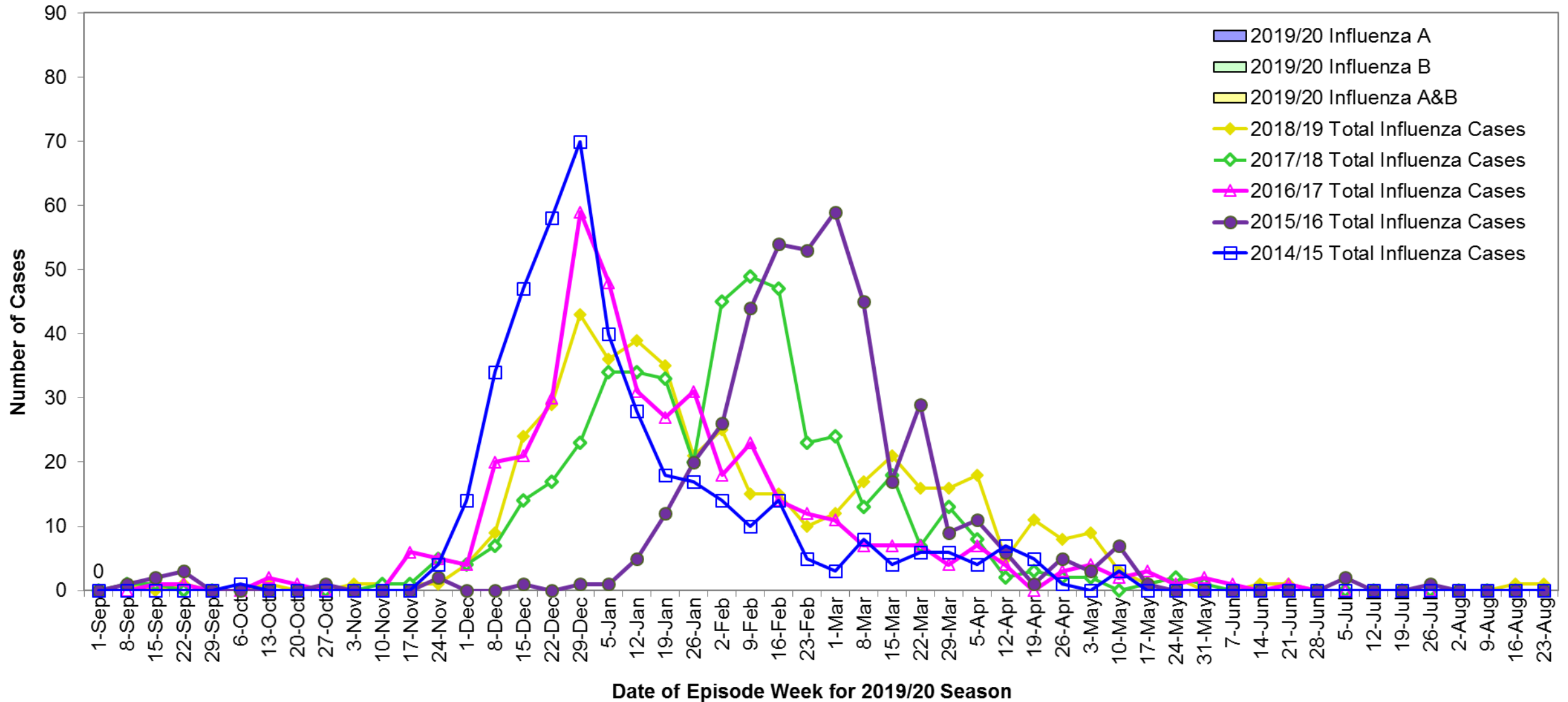
For more information or if you require this information in an accessible format, please contact Durham Health Connection Line at 905-666-6241 or 1-800-841-2729.

Table 2: Confirmed influenza cases in Durham Region by type and episode week for 2019/20 influenza season compared to previous seasons as of Sep 7, 2019

Week Beginning Date	Week Number	Influenza A	Influenza B	Influenza A & B	2019/2020 Total Cases	2018/2019 Total Cases	2017/2018 Total Cases	2016/2017 Total Cases	2015/2016 Total Cases
1-Sep	36	0	0	0	0	1	0	0	0
8-Sep	37	--	--	--	--	0	0	0	0
15-Sep	38	--	--	--	--	1	1	0	1
22-Sep	39	--	--	--	--	0	1	1	2
29-Sep	40	--	--	--	--	1	0	1	3
6-Oct	41	--	--	--	--	0	0	0	0
13-Oct	42	--	--	--	--	0	0	0	0
20-Oct	43	--	--	--	--	1	0	2	0
27-Oct	44	--	--	--	--	0	0	1	0
3-Nov	45	--	--	--	--	0	0	0	1
10-Nov	46	--	--	--	--	1	0	0	0
17-Nov	47	--	--	--	--	1	1	0	0
24-Nov	48	--	--	--	--	1	1	6	0
1-Dec	49	--	--	--	--	1	5	5	2
8-Dec	50	--	--	--	--	4	4	4	0
15-Dec	51	--	--	--	--	9	7	20	0
22-Dec	52	--	--	--	--	24	14	21	1
29-Dec	1	--	--	--	--	29	17	30	0
5-Jan	2	--	--	--	--	43	23	59	1
12-Jan	3	--	--	--	--	36	34	48	1
19-Jan	4	--	--	--	--	39	34	31	5
26-Jan	5	--	--	--	--	35	33	27	12
2-Feb	6	--	--	--	--	21	20	31	20
9-Feb	7	--	--	--	--	25	45	18	26
16-Feb	8	--	--	--	--	15	49	23	44
23-Feb	9	--	--	--	--	15	47	14	54
1-Mar	10	--	--	--	--	10	23	12	53
8-Mar	11	--	--	--	--	12	24	11	59
15-Mar	12	--	--	--	--	17	13	7	45
22-Mar	13	--	--	--	--	21	18	7	17
29-Mar	14	--	--	--	--	16	7	7	29
5-Apr	15	--	--	--	--	16	13	4	9
12-Apr	16	--	--	--	--	19	8	7	11
19-Apr	17	--	--	--	--	5	2	4	6
26-Apr	18	--	--	--	--	11	3	0	1
3-May	19	--	--	--	--	8	2	3	5
10-May	20	--	--	--	--	9	2	4	3
17-May	21	--	--	--	--	3	0	2	7
24-May	22	--	--	--	--	1	1	3	1
31-May	23	--	--	--	--	2	2	1	0
7-Jun	24	--	--	--	--	0	1	2	0
14-Jun	25	--	--	--	--	0	0	1	0
21-Jun	26	--	--	--	--	1	0	0	0
28-Jun	27	--	--	--	--	1	0	1	0
5-Jul	28	--	--	--	--	0	0	0	0
12-Jul	29	--	--	--	--	0	0	0	2
19-Jul	30	--	--	--	--	0	0	0	0
26-Jul	31	--	--	--	--	0	0	0	0
2-Aug	32	--	--	--	--	0	0	0	1
9-Aug	33	--	--	--	--	0	0	0	0
16-Aug	34	--	--	--	--	0	0	0	0
23-Aug	35	--	--	--	--	1	0	0	0
Total	--	0	0	0	0	455	455	418	422

Source: Ontario Ministry of Health and Long-Term Care, integrated Public Health Information System (iPHIS) Database, Extracted by Durham Region Health Department [2019-09-11].

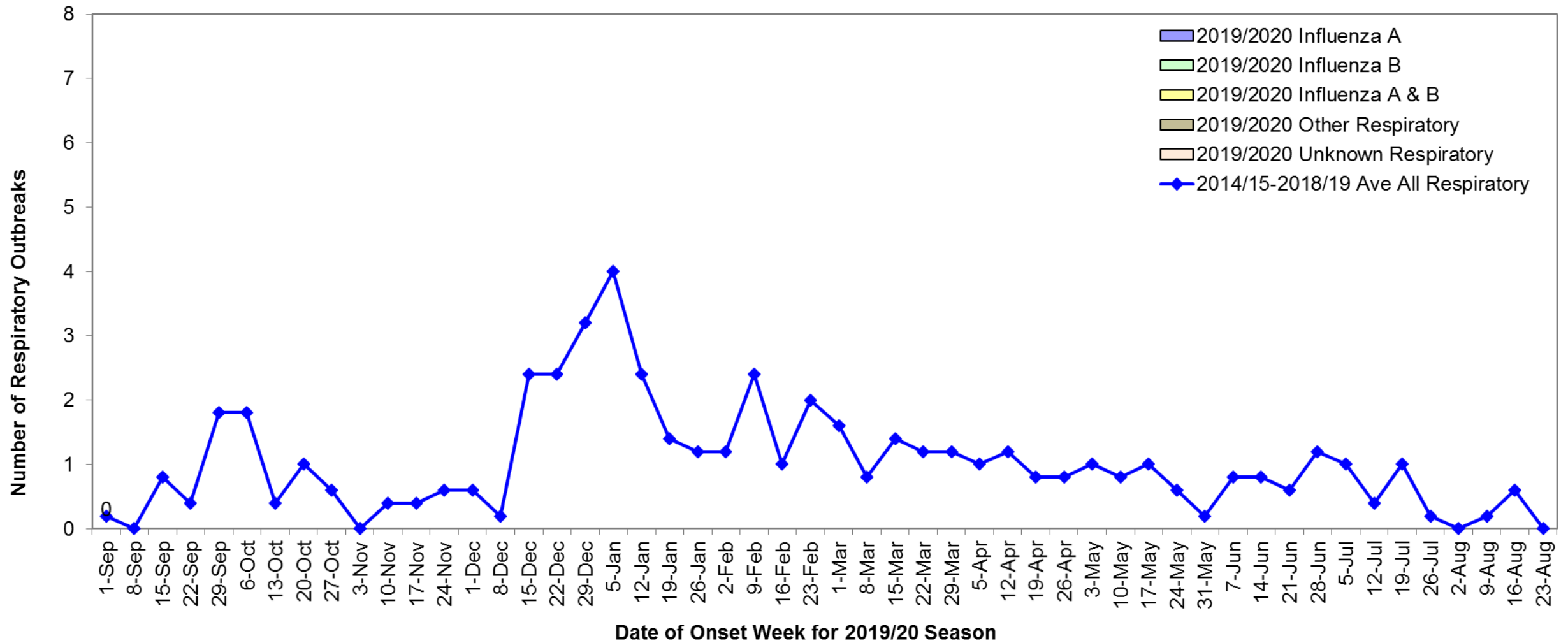
Figure 1: Confirmed Influenza Cases in Durham Region by Type as of September 7, 2019; 2019/20 Influenza Season by Week Compared to Previous Season



Episode week may differ from reported week.

Data Source: Ontario Ministry of Health and Long-Term Care, integrated Public Health Information System (iPHIS) Database, Extracted by Durham Region Health Department [2019-09-11].

Figure 2: Number of Respiratory Outbreaks in Institutions as of September 7, 2019; 2019/20 Influenza Season by Week Compared to Previous Seasons



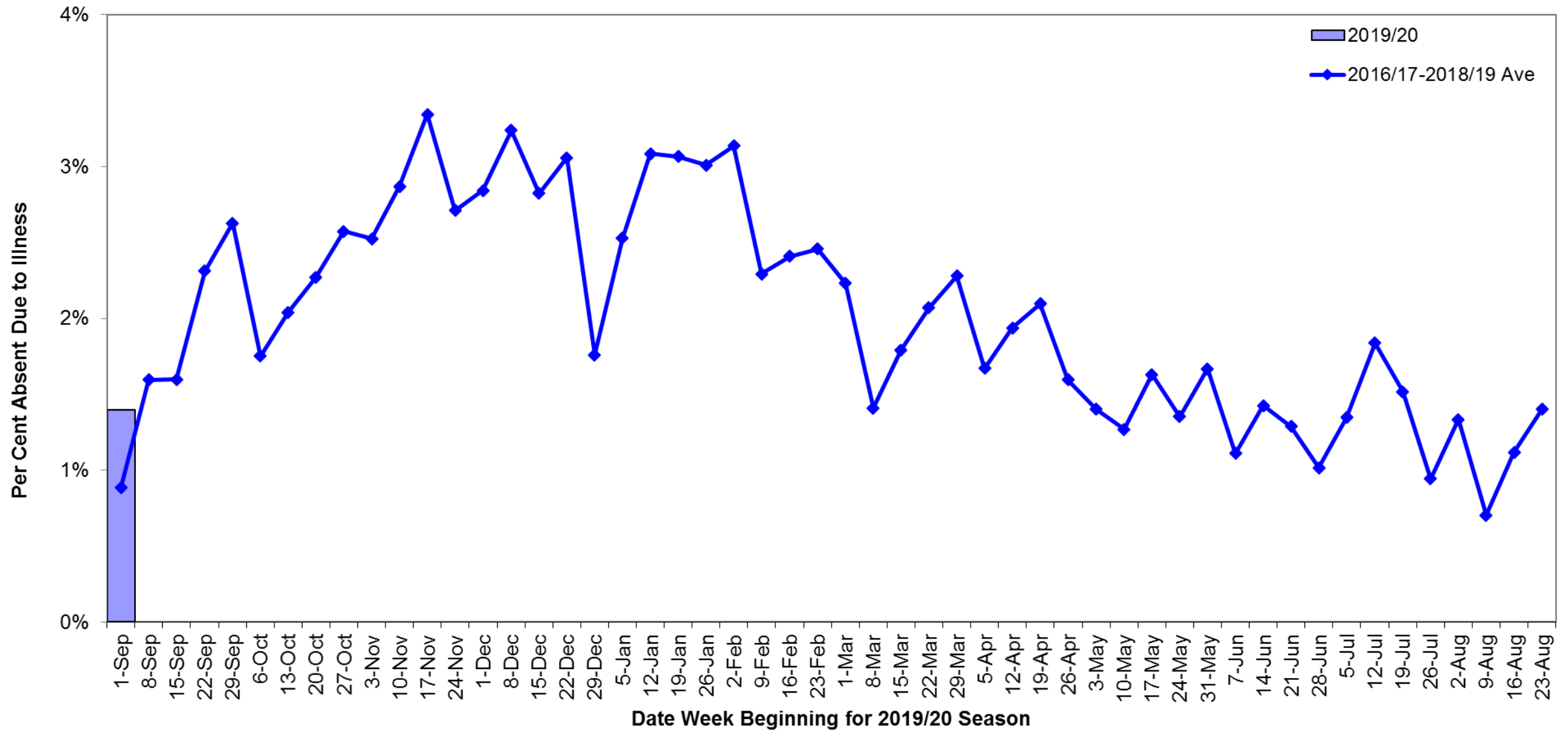
1. Institutions include Long-Term Care Homes, Hospitals and Retirement Homes.

2. Onset week may differ from reported week.

3. Increases in the unknown respiratory category may be the result of changes to Public Health Ontario laboratory testing during the 2017/18 season as testing will no longer detect coronavirus, parainfluenza virus 4 or entero/rhinoviruses.

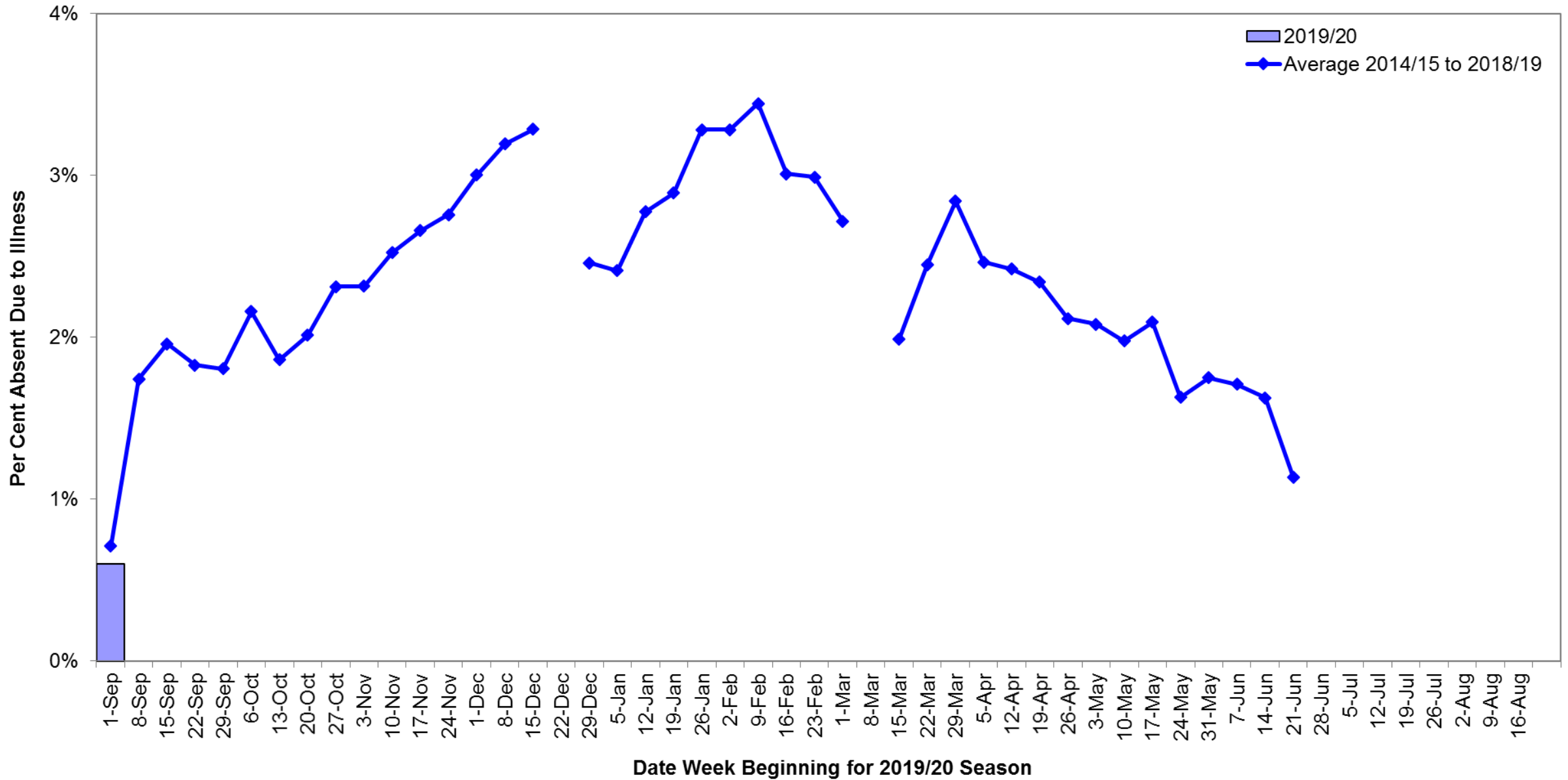
Data Source: Durham Region Health Department, Acute Respiratory Disease Surveillance System (ARDSS)

Figure 3: Child Absenteeism in Durham Region Sentinel Child Care Centres as of September 7, 2019; 2019/20 Influenza Season by Week



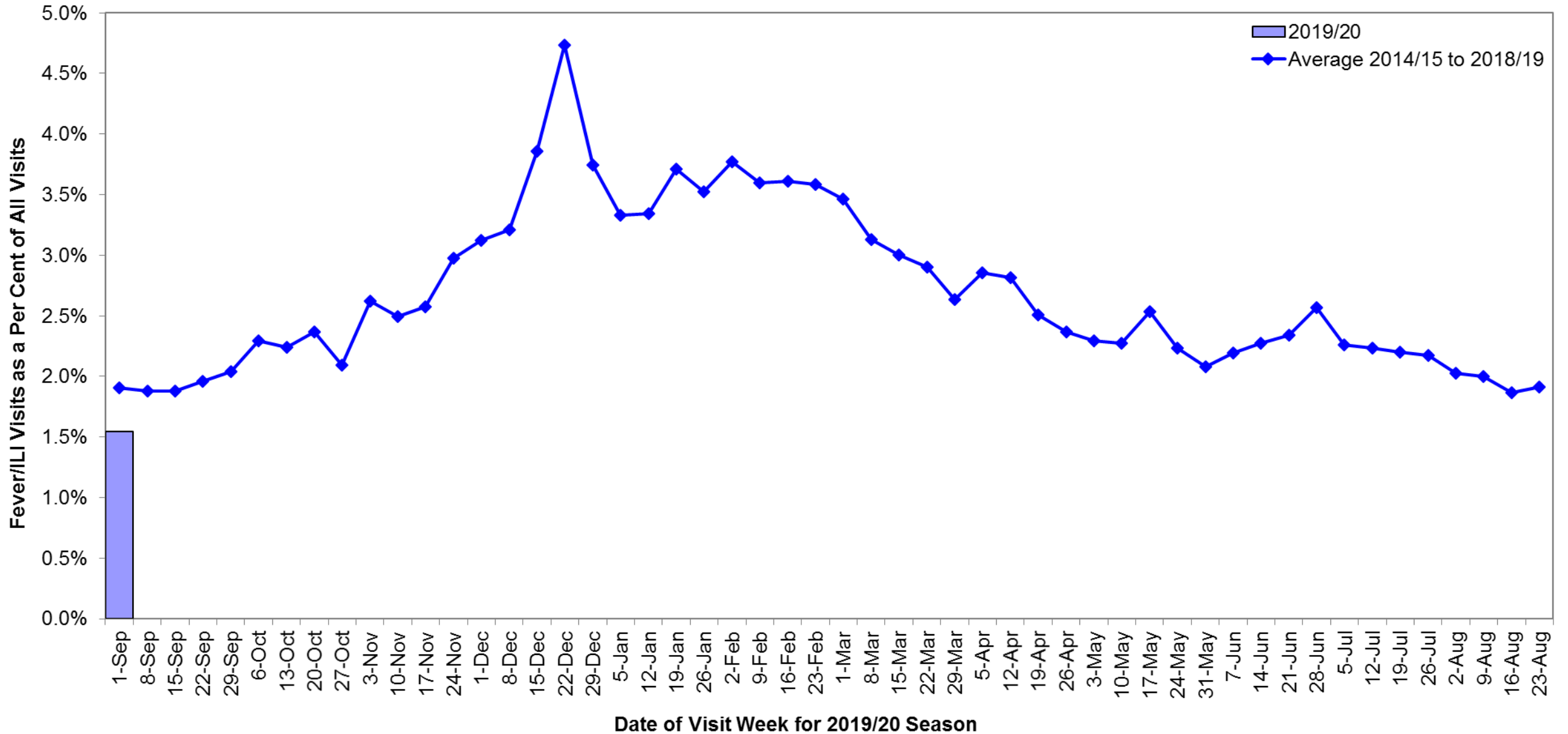
Data Source: Durham Region Sentinel Child Care Centres

Figure 4: Absenteeism Due to Illness in Durham Region Elementary Schools as of September 7, 2019; 2019/20 Influenza Season by Week Compared to Previous Seasons



Data Source: Durham District School Board, Kawartha Pine Ridge District School Board, and Peterborough Victoria Northumberland and Clarington Catholic District School Board

Figure 5: Visits by Durham Region Residents to Emergency Departments for Fever/ILI as of September 7, 2019; 2019/20 Influenza Season by Week Compared to Previous Seasons



Fever/ILI category includes visits for undifferentiated fever, chills, myalgias, joint pain, and flu like illness.

Data Source: Acute Care Enhanced Surveillance, Extracted by Durham Region Health Department [2019-09-11].