



The Regional Municipality of Durham Information Report

From: Commissioner of Planning and Economic Development
Report: #2017-INFO-71
Date: June 9, 2017

Subject:

2016 Census of Agriculture, File: D01-03

Recommendation:

Receive for information

Report:

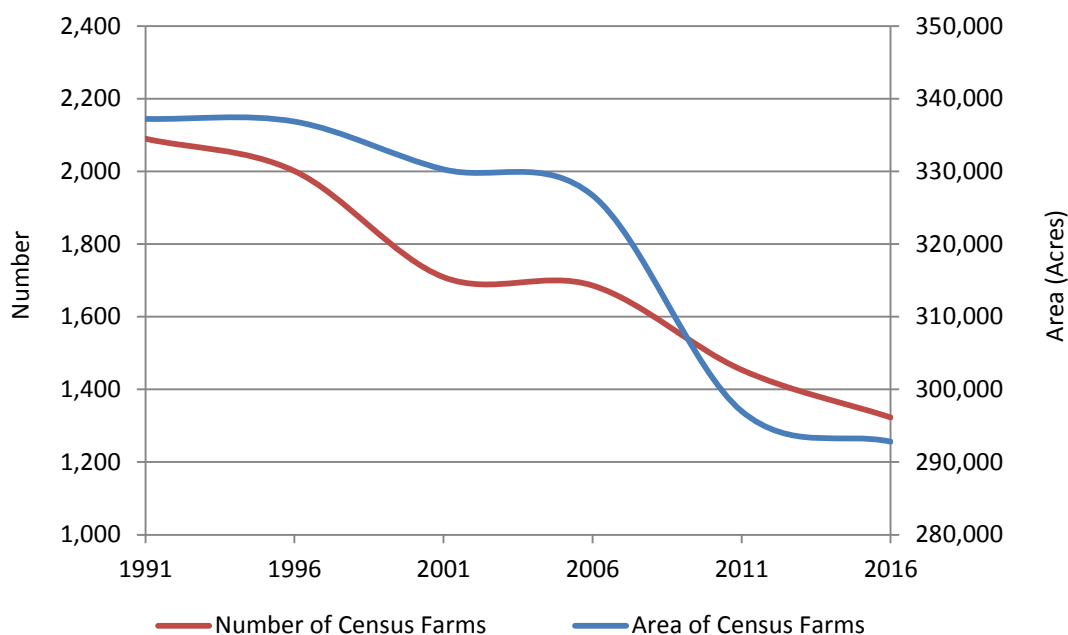
1. Purpose

- 1.1 On May 10, 2017, Statistics Canada released the 2016 Census of Agriculture for municipalities across Canada.
- 1.2 This report presents an overview of Census of Agriculture data for Canada, Ontario, the Greater Golden Horseshoe (GGH) and Durham Region. This report highlights changes in the characteristics of farm industries, size, capital and operators.

2. Key Indicators

- 2.1 The number of farms in Durham decreased from 1,454 to 1,323 between 2011 and 2016 (-9%). The land area of farms in Durham also decreased from 297,012 acres in 2011 to 292,815 acres in 2016 (-1.4%). Both of these indicators follow historical trends of declining number of farms and land (refer to Figure 1). Over the same period, the area of land in crops increased from 209,570 acres in 2011 to 215,608 acres in 2016 (+2.9%) as farmers increased the productive land base.

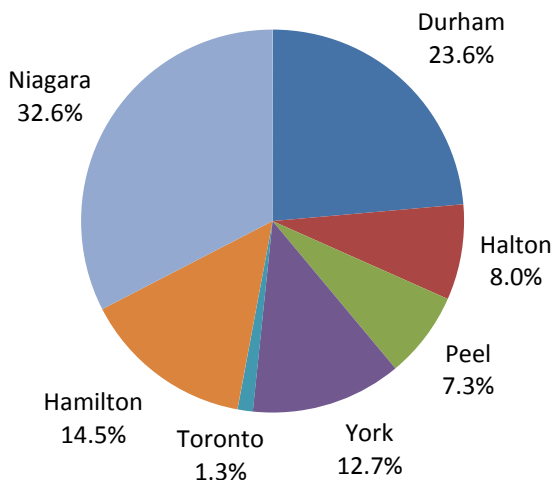
Figure 1
Number of Farms and Land Area in Durham



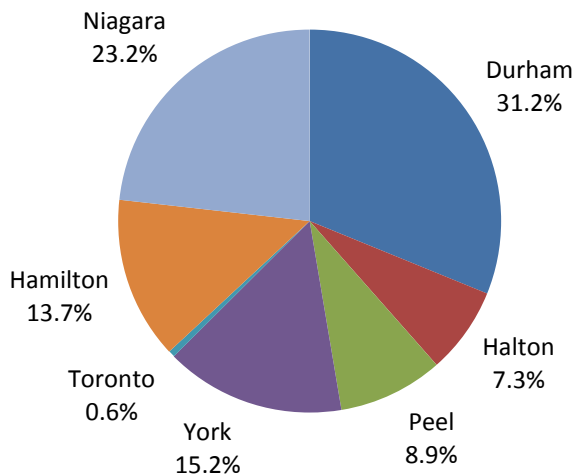
- 2.2 Agricultural trends in Durham were generally consistent with those at the regional, provincial and national level. The number of farms and land area decreased from 2011 to 2016 for the GGH (-8% and -3.9% respectively), Ontario (-4.5% and -2.5% respectively) and Canada (-5.9% and -0.9% respectively). The amount of land in crops increased at both the provincial (+1%) and national level (+6.9%); although it decreased in the GGH (-2.2%).
- 2.3 There were 5,604 farms within the GGH in the 2016 Agricultural Census. The majority of agricultural activity in the GGH occurs in Durham and Niagara Region. Niagara Region had the greatest proportion of farms (32.6%), followed by Durham (23.6%). Durham Region had the greatest proportion of land area (29.4%) and area of land in crops (31.2%), followed by Niagara (24.8% and 23.2% respectively) (refer to Figure 2).
- 2.4 Approximately \$2 billion in gross farm receipts were reported in the GGH, representing 13% of the provincial total. Niagara Region reported \$838 million (42.6%) in gross farm receipts, followed by Durham (\$322 million or 16.4%) and Hamilton (\$260 million or 13.2%). Total market capitalization of all farms in the GGH was \$16.5 billion (refer to Figure 2).

Figure 2
Farms in the Greater Golden Horseshoe (GGH)

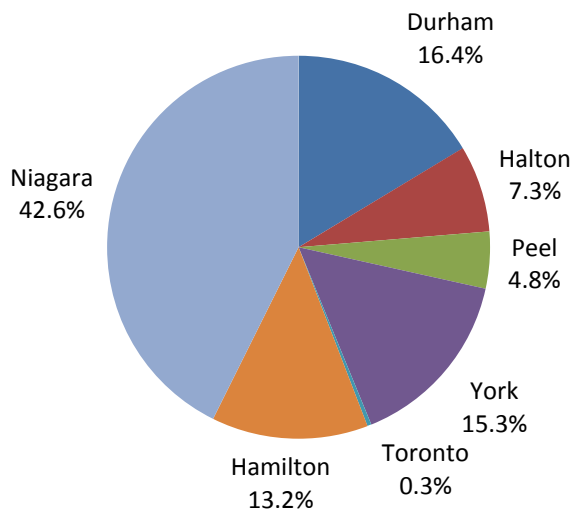
Total Number of Farms



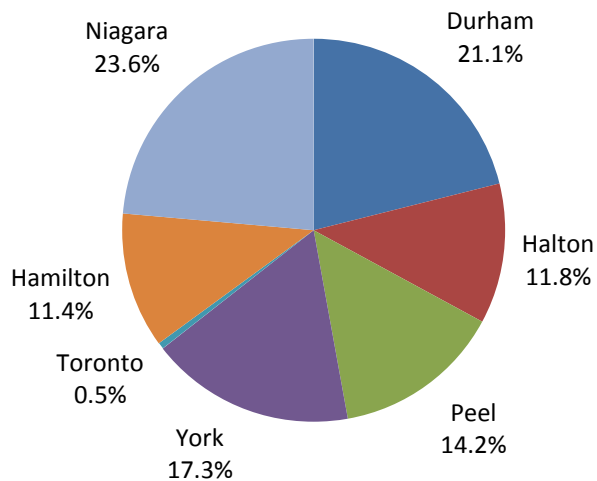
Total Land Area of Farms



Gross Farm Receipts



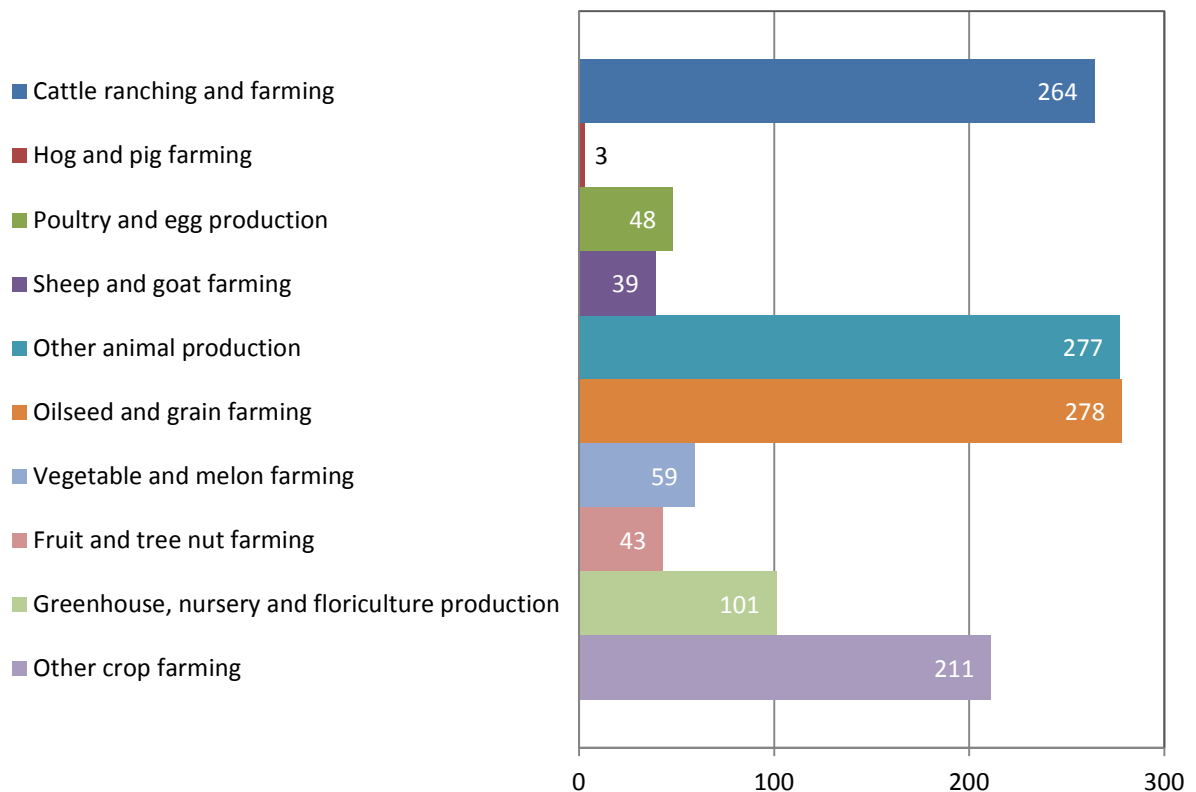
Market Capitalization



3. Farm Industries

3.1 Within Durham Region's agricultural sector, oilseed and grain farming (21%) and cattle ranching and farming (20%) are the predominant industry groups (refer to Figure 3). The cattle industry makes up nearly half of all animal producing farms (41.8%), while oilseed and grain farming represents over a third of all crop farms (40.2%) in Durham Region.

Figure 3
Farm Industries in Durham



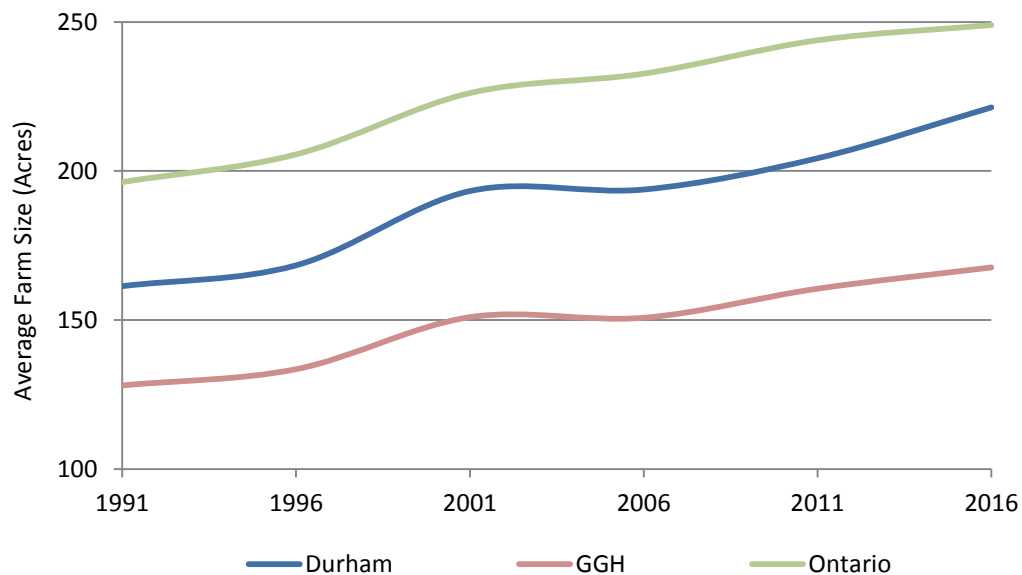
3.2 In Ontario, oilseed and grain farming represents a larger share (34%) of farms, and cattle ranching is slightly less (20.6%). Hog and pig farming is more prevalent throughout the province where it represents 2.5% of all farms, compared to only 0.2% in Durham Region. Conversely, the greenhouse, nursery and floriculture production industry represents a much larger share of farms in Durham (7.6%), compared to Ontario (4.1%).

3.3 In Durham Region, beef cattle represent over two thirds of all cattle farms (69.3%). Dairy cattle and milk production is also important, as 81 farms are dedicated to this industry. Horse and equestrian production is also a significant industry representing 28.2% of all animal farms. Within the oilseed and grain farming industry group, corn (34.2%) and soybeans (24.5%) are the dominant crops in the Region. Among other crops, hay farming also represents a significant proportion of all farms in Durham (19.8%).

4. Farm Size

4.1 The average size of farms in Durham Region has increased over time. Economies of scale and better farming practices have led to a consolidation of smaller farms within the Region. Figure 4 illustrates that this has been a common trend in Ontario and across the GGH.

Figure 4
Average Farm Size



- 4.2 Over a third of farms in Durham Region are 130 acres and larger (35.4%), with over 13.2% of all farms being at least 400 acres. The majority of farms are between 10 to 129 acres (58.3%). Similar patterns for farm size can be seen at the provincial and regional level.

5. Farm Operators

- 5.1 In 2016, the average age for farm operators in Durham was 57.6 years, slightly higher than 56.5 years in 2011. This trend is consistent with the provincial average which increased from 54 years in 2011 to 55 years in 2016. In Durham Region the majority of farm operators are 55 years and over (61.7%). Conversely, only 5.9% of operators in Durham Region are under 35 years old.
- 5.2 The majority of farm operators in Durham Region are men (68.4%). However, there was an increase in the proportion of female operators, from 30.3% in 2011 to 31.4% in 2016. By comparison, Durham Region had a slightly higher proportion of female farm operators than Ontario (29.7%) and Canada (28.7%).

6. Farm ownership

- 6.1 In Durham, the proportion of agricultural land that is owned by farm operators (68%) is much higher than throughout the GGH (51%). Durham has similar rates of ownership as the provincial (67.8%) and national (72%) averages.
- 6.2 The remaining farm lands are crop shared, used for non-agricultural purposes, or leased to farmers by government and other residents and businesses that do not actively farm.
- 6.3 The share of land in Durham that is leased (26.9%) is comparable to the provincial (21.2%) and national (26.2%) averages. Within the GGH, the percentage of land that is leased was significantly higher (41.8%).

7. Conclusion

- 7.1 A copy of this report will be forwarded to the area municipalities and be made available on the Region's website.

8. Attachments

Attachment #1: Statistics Canada 2016 Census of Agriculture

Respectfully submitted,

Original signed by

B.E. Bridgeman, MCIP, RPP
Commissioner of Planning and
Economic Development

Statistics Canada 2016 Census of Agriculture

Table 1
Farm Size and Productive Land in Durham

Indicators	Brock	Clarington	Oshawa	Pickering	Scugog	Uxbridge	Whitby
Number of Farms	239	357	43	49	303	271	61
Area of Farms (Acres)	68,957	74,749	8,004	10,125	62,873	53,055	15,052
Land in Crops (Acres)	46,923	56,041	6,051	7,221	45,570	41,830	11,972

Note: The Town of Ajax is included within the Whitby Consolidated Subdivision

Table 2
Farm Size and Productive Land

Indicators	Durham	GGH	Ontario	Canada
Number of Farms	1,323	5,604	49,600	193,492
Area of Farms (Acres)	292,815	939,438	12,348,463	158,723,092
Land in Crops (Acres)	215,608	732,269	9,021,298	93,382,638

Table 3
Farm Industries in Durham

Farm industry group	Brock	Clarington	Oshawa	Pickering	Scugog	Uxbridge	Whitby
Cattle ranching	73	70	7	3	64	44	3
Hog and pig farming	0	0	0	0	2	1	0
Poultry and egg	8	7	3	2	21	6	1
Sheep and goat	10	6	1	2	11	9	0
Other animal production	45	79	11	16	57	56	13
Oilseed and grain	43	83	8	11	59	60	14
Vegetable and melon	10	18	2	2	10	14	3
Fruit and tree nut	1	18	0	2	8	8	6
Greenhouse, nursery and floriculture	10	34	4	6	20	15	12
Other crop farming	39	42	7	5	51	58	9

Note: The Town of Ajax is included within the Whitby Consolidated Subdivision

Table 4
Farm Industries

Farm industry group	Durham	GGH	Ontario	Canada
Cattle ranching	264	601	10,225	46,538
Hog and pig farming	3	28	1,229	3,305
Poultry and egg	48	308	1,816	4,903
Sheep and goat	39	107	1,097	3,056
Other animal production	277	1,009	5,902	19,792
Oilseed and grain	278	1,135	16,876	63,628
Vegetable and melon	59	356	1,856	5,514
Fruit and tree nut	43	713	1,362	7,845
Greenhouse, nursery and floriculture	101	688	2,050	6,449
Other crop farming	211	659	7,187	32,462