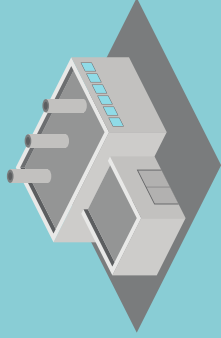




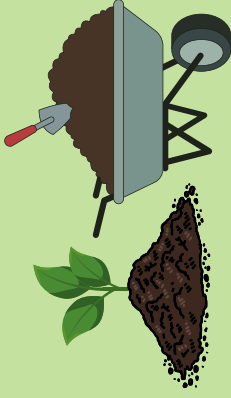
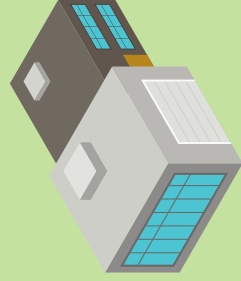
How does Durham Region currently manage waste?

Blue Box



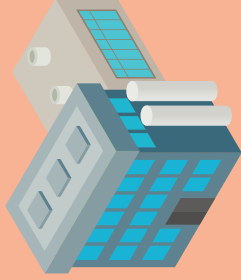
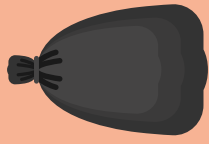
Recyclables are sent to our Material Recovery Facility (MRF) in Whitby for sorting and marketing. Where there is market demand, recyclable material are then turned into new items.

Green Bin



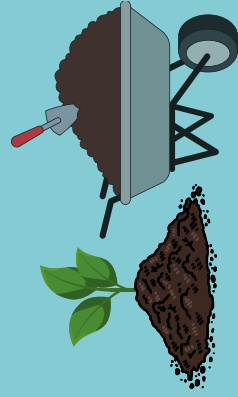
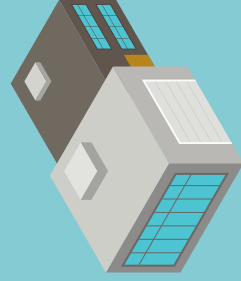
Organics are sent for composting at a facility in Pickering and marketed to farmers, landscapers and soil remediation firms. Residents can also pick up compost for free at special community waste events.

Garbage



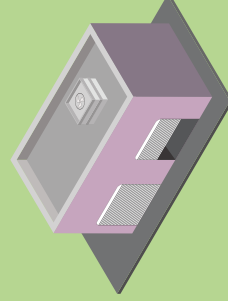
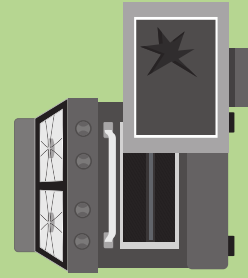
Garbage is sent to the Durham York Energy Centre (DYEC) for incineration to generate electricity and recover metal for recycling.

Leaf and Yard Waste



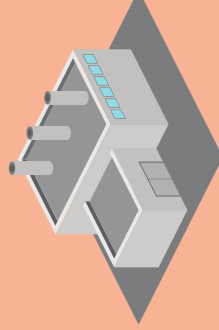
Leaf and yard waste is sent for composting at a facility in Clarington and marketed to farmers, landscapers and soil remediation firms. Residents can also pick up compost for free at special community waste events.

Electronics



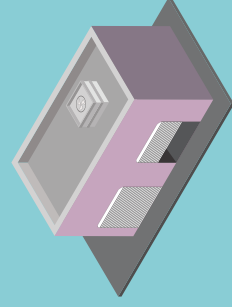
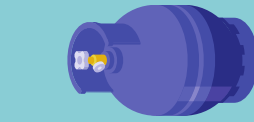
Electronics are sent to a Waste Management Facility for bulking and recycling. Scrap and precious metals are then reused for new items.

Batteries



Batteries are collected and sent to a third party to be recycled. Metals are recycled and nutrients are used to create fertilizer.

Household Hazardous Waste



Household hazardous waste products are dropped off at Waste Management Facilities or collected during annual waste events and disposed of properly.