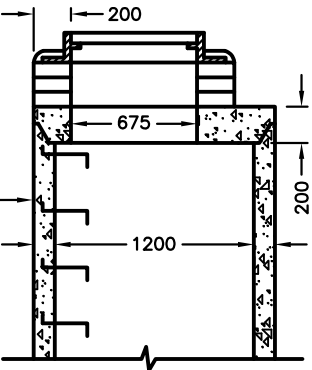


**SECTION A-A**

**SECTION B-B**

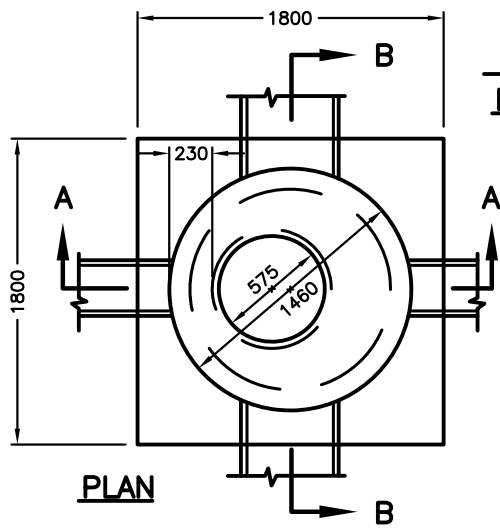


**PRECAST FLAT TOP**

HEIGHT OF BENCHING ABOVE INVERT OF OUTLET PIPE					
PIPE DIAMETER	UP TO 250 mm INCLUSIVE	300 mm	350 mm & 375 mm	400 mm TO 600 mm INCLUSIVE	GREATER THAN 600 mm
BENCHING REQUIRED	0.5 PIPE DIA.	175 mm	0.5 PIPE DIA.+50 mm	0.5 PIPE DIA.+75 mm	BENCHING TO TOP OF PIPE

(LOWEST BENCHING SHALL GOVERN)

MAINTENANCE HOLE SECTION SHALL MEET OPSS 1351 OR EQUIVALENT



**PLAN**

**NOTES:**

1. OPENING IN BASE FOR PRECAST SECTION NOT SHALL BE LARGER THAN O.D. + 25mm SPACE BETWEEN PRECAST SECTION & BASE SHALL BE FILLED WITH HOT BITUMINOUS SEALER.
2. TOP OF BENCHING SHALL BE SLOPED AT 2% TO CHANNEL.
3. ANY PIPES ENTERING THE PRECAST SECTION OF MAINTENANCE HOLE ABOVE Poured BASE MUST NOT ENTER AT A MAINTENANCE HOLE SECTION JOINT.
4. LIFTING HOLES IN PRECAST SECTIONS SHALL BE COMPLETELY FILLED WITH 3 PARTS SAND, 1 PART CEMENT MORTAR AND POINTED BEFORE BACKFILLING.
5. MAINTENANCE HOLE STEPS SHALL BE POSITIONED AS PER OPSD 405.010 OR OPSD 405.020.
6. PRECAST FLAT TOP SHALL BE USED WHEN TOTAL HEIGHT OF PRECAST SECTION IS LESS THAN 1.80 m.
7. GASKETS SHALL BE PLACED AS PER MANUFACTURERS SPECIFICATIONS.
8. FOR MAINTENANCE HOLE DEPTHS GREATER THAN 5.0 m, A MAINTENANCE HOLE SAFETY GRATING IS REQUIRED.
9. FOR DEPTHS GREATER THAN 7.5 m, THE MAINTENANCE HOLE MUST BE INDIVIDUALLY DESIGNED IF NECESSARY.
10. BENCHING DETAIL AS PER OPSD 701.021.

ALL DIMENSIONS IN MILLIMETRES EXCEPT WHERE NOTED.



**1200 mm SEMI-PRECAST CONCRETE MAINTENANCE HOLE (FOR SEWER SIZES UP TO 750 mm ON STRAIGHT RUNS)**

DWG. DATE: 1978 03
REVISION NO.: 10
REV. DATE: 2020 04
SCALE: N.T.S.
<b>S-100.060</b>