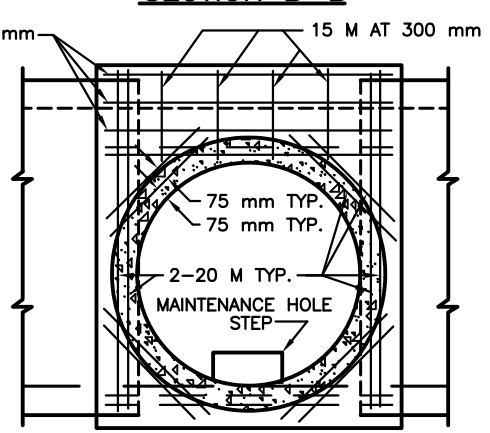
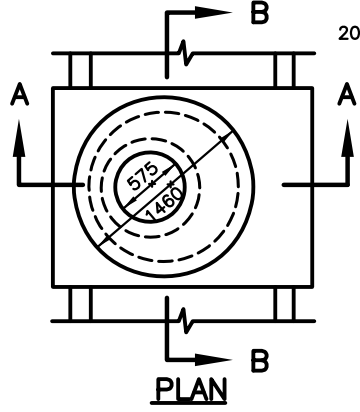
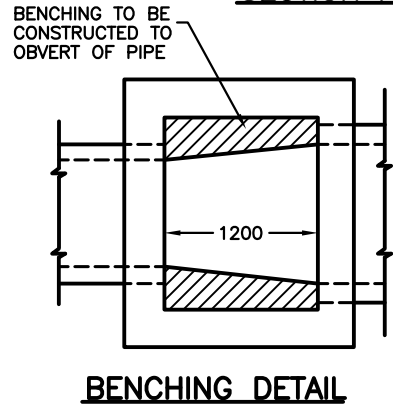


SECTION A-A

SECTION B-B

SECTION C-C



NOTES:

1. OPENING IN BASE FOR PRECAST SECTION NOT TO BE LARGER THAN O.D. + 25 mm SPACE BETWEEN PRECAST SECTION & BASE TO BE FILLED WITH HOT BITUMINOUS SEALER.
2. ANY PIPES ENTERING THE PRECAST SECTION OF MAINTENANCE HOLE ABOVE POURED BASE MUST NOT ENTER AT A MAINTENANCE HOLE SECTION JOINT.
3. LIFTING HOLES IN PRECAST SECTIONS TO BE COMPLETELY FILLED WITH 3 PARTS SAND, 1 PART CEMENT MORTAR AND POINTED BEFORE BACK-FILLING.
4. TOP OF BENCHING TO BE SLOPED AT 2% TO CHANNEL.
5. POURED CONCRETE WALLS TO BE 230 mm THICK WHEN OVERALL MAINTENANCE HOLE HEIGHT IS 4.5 m OR LESS, & 300 mm THICK WHEN OVERALL MAINTENANCE HOLE HEIGHT IS FROM 4.5 m - 7.5 m (OVERALL DEPTH MEASURED TO INVERT).
6. PRECAST FLAT TOP TO BE USED WHEN TOTAL HEIGHT OF PRECAST SECTION IS LESS THAN 1.8 m.
7. WHEN TOTAL PRECAST SECTION IS 1.2 m, USE PRECAST CONE SECTION WITH A FLAT BASE.
8. GASKETS TO BE PLACED AS PER MANUFACTURERS SPECIFICATIONS.
9. MAINTENANCE HOLE STEPS TO BE POSITIONED AS PER STANDARD OPSP 405.010 OR OPSP 405.020.
10. BENCHING DETAIL AS PER OPSP 701.021.
11. FOR MH DEPTHS GREATER THAN 5.0 m, A MAINTENANCE HOLE SAFETY GRATING IS REQUIRED.

ALL DIMENSIONS IN MILLIMETRES EXCEPT WHERE NOTED.



**SEMI-PRECAST CONCRETE
MAINTENANCE HOLE
(FOR SEWER SIZES 675 mm TO 1500 mm)**

DWG. DATE: 1978 03
REVISION NO.: 10
REV. DATE: 2020 04
SCALE: N.T.S.
S-100.070