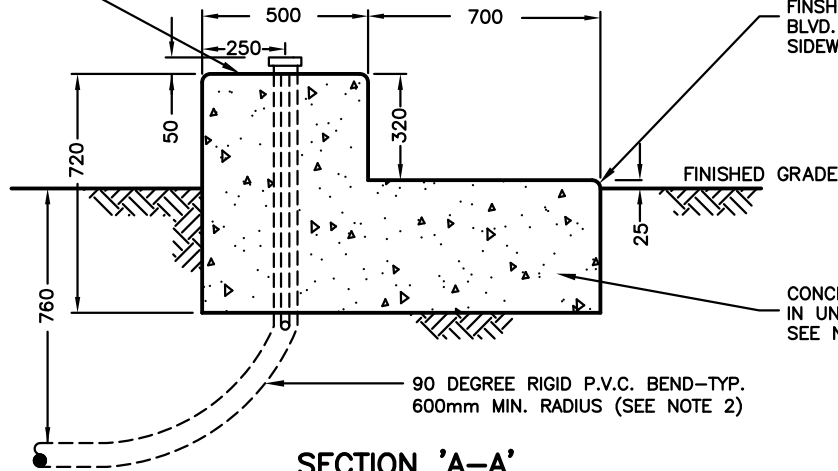


**SECTION 'B-B'**

SURFACE OF CONCRETE SHALL BE FLAT AND LEVEL

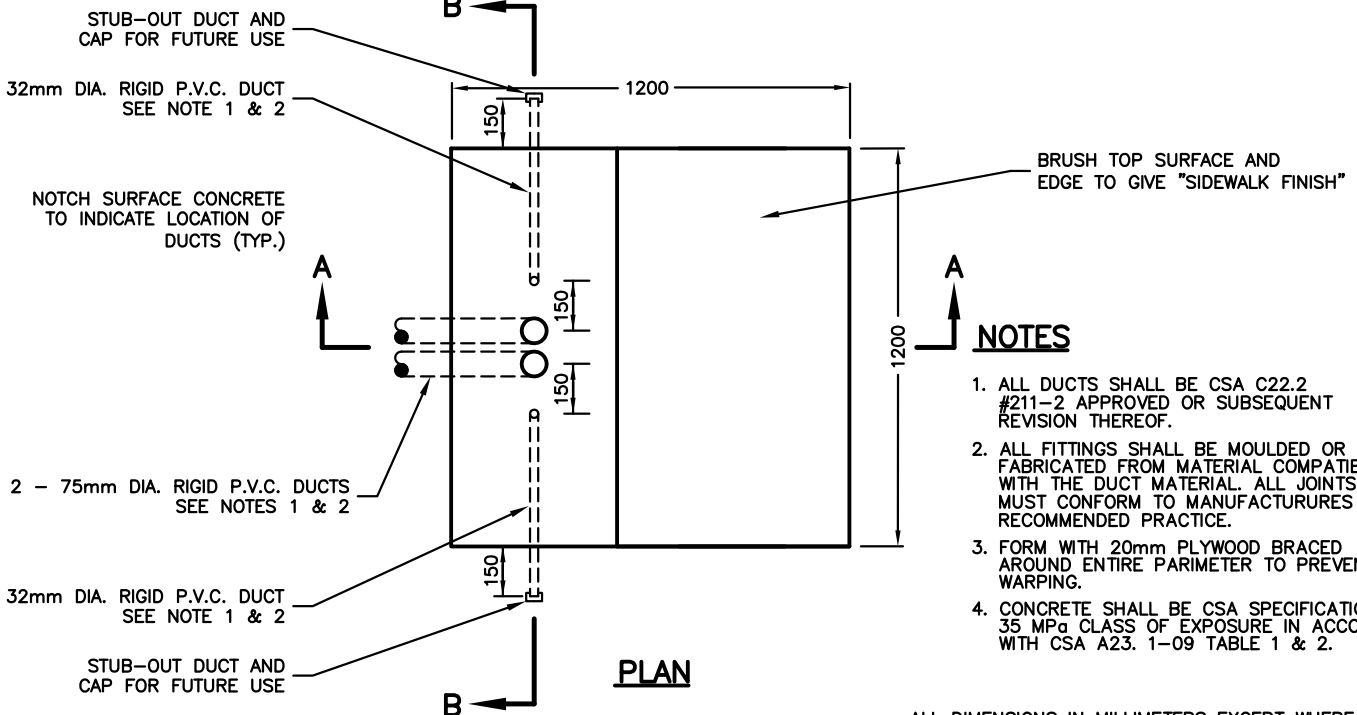


**SECTION 'A-A'**

SURFACE SHALL BE 25mm ABOVE FINISHED GRADE IF LOCATED IN OPEN BLVD. OR LEVEL WITH ABUTTING SIDEWALK WHERE APPLICABLE

CONCRETE SHALL BE POURED IN UNDISTURBED SOIL SEE NOTE 4

90 DEGREE RIGID P.V.C. BEND-TYP. 600mm MIN. RADIUS (SEE NOTE 2)



**PLAN**

**NOTES**

1. ALL DUCTS SHALL BE CSA C22.2 #211-2 APPROVED OR SUBSEQUENT REVISION THEREOF.
2. ALL FITTINGS SHALL BE MOULDED OR FABRICATED FROM MATERIAL COMPATIBLE WITH THE DUCT MATERIAL. ALL JOINTS MUST CONFORM TO MANUFACTURERS RECOMMENDED PRACTICE.
3. FORM WITH 20mm PLYWOOD BRACED AROUND ENTIRE PERIMETER TO PREVENT WARPING.
4. CONCRETE SHALL BE CSA SPECIFICATION C-1 35 MPa CLASS OF EXPOSURE IN ACCORDANCE WITH CSA A23.1-09 TABLE 1 & 2.

ALL DIMENSIONS IN MILLIMETERS EXCEPT WHERE NOTED.



WORKS DEPARTMENT

**CONCRETE FOOTING FOR 'M' TYPE TRAFFIC CONTROLLER CABINET**

DWG. DATE: 1979 01

REVISION NO.: 13

REV. DATE: 2013 04

SCALE: N.T.S.

**S-400.021**