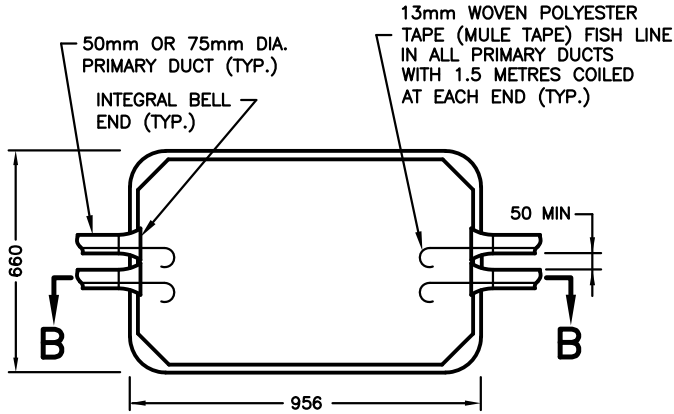
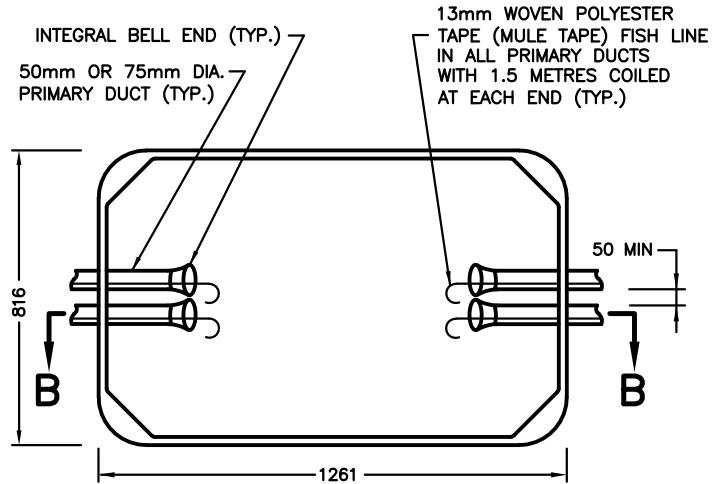


**TYPE II HANDHOLE
TRAFFIC CONTROLLER CORNER**

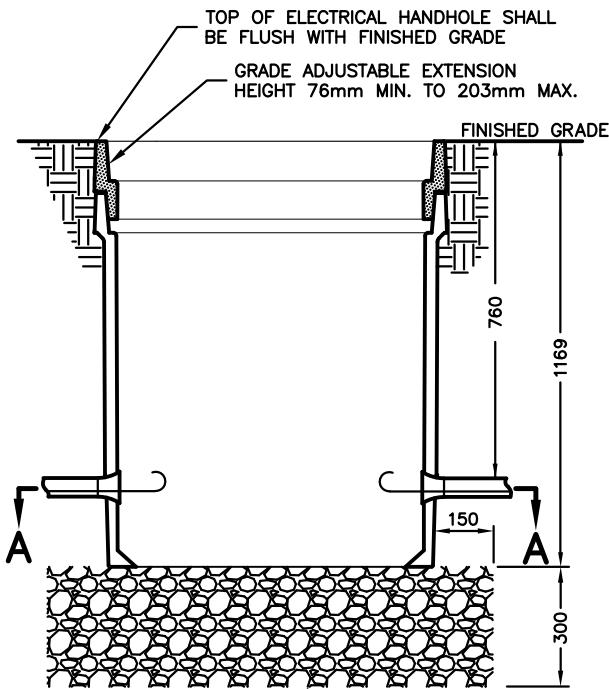


SECTION A-A

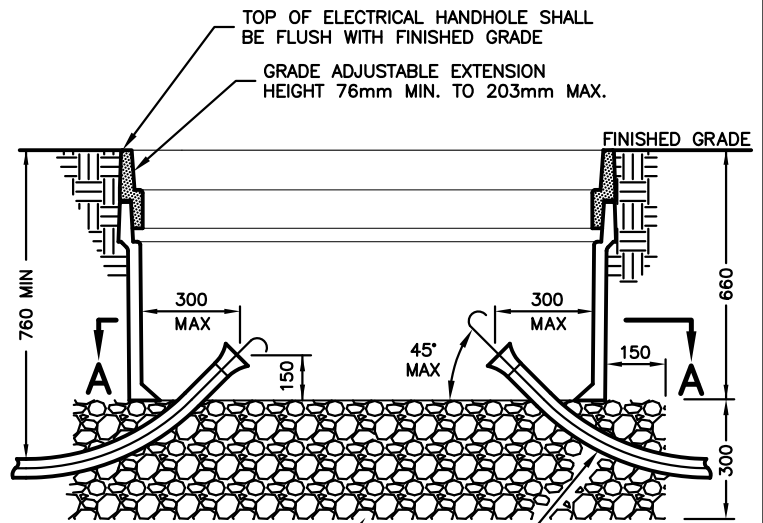
**TYPE III HANDHOLE
TRAFFIC INTERCONNECT**



SECTION A-A



SECTION B-B



SECTION B-B

NOTES

1. ALL DUCTS AND FITTINGS SHALL MEET C.S.A 22.2 No. 211.2-06 SPECIFICATIONS OR APPROVED EQUAL.
2. DUCTS SHALL ENTER THE HANDHOLE PERPENDICULAR TO THE HANDHOLE WALL.
3. ALL ENTRANCE HOLES INTO HANDHOLE SHALL BE MADE WITH A DIAMOND TIPPED MASONARY HOLE SAW WITH DIA. NO MORE THAN 6mm LARGER THAN THE O.D. OF THE DUCT OR FITTING BEING USED.

4. INTEGRAL BELL ENDS SHALL BE USED FOR ALL 50mm AND 75mm DUCT ENTRIES. INTEGRAL BELL ENDS SHALL BE INSTALLED FLUSH WITH THE INSIDE WALL OF TYPE II HANDHOLES.
5. ALL DUCTS SHALL BE SEALED WITH PLASTIC PLUGS UNTIL WIRING IS INSTALLED.
6. ELECTRICAL HANDHOLES INSTALLED WITH DUCT ENTRY HOLES MADE LARGER THAN SPECIFIED OR MADE USING A DEVICE OTHER THAN A HOLE SAW WILL BE REMOVED AND REPLACED AT THE CONTRACTORS EXPENSE. PATCHING OF OVERSIZED OR IRREGULER SHAPED DUCT ENTRY HOLES WILL NOT BE ACCEPTED.
7. HANDHOLE MAY NOT BE EXACTLY AS SHOWN.

ALL DIMENSIONS IN MILLIMETRES EXCEPT WHERE NOTED.



WORKS DEPARTMENT

**ELECTRICAL HANDHOLE WITH COVER
NON CONCRETE RECTANGULAR**

DWG. DATE: 2008 04
REVISION NO.: 6
REV. DATE: 2017 04
SCALE: N.T.S.

S-400.033