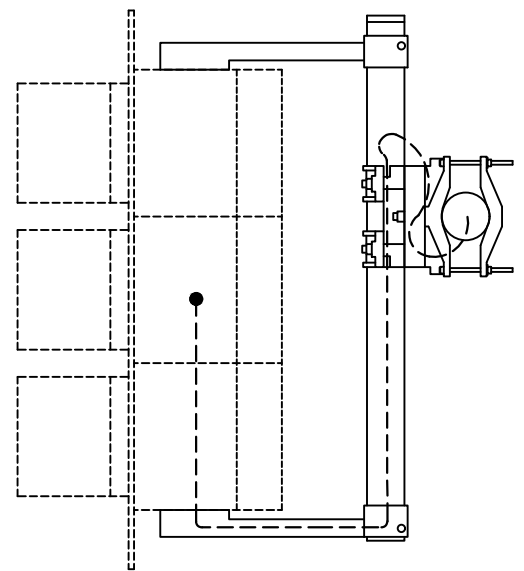
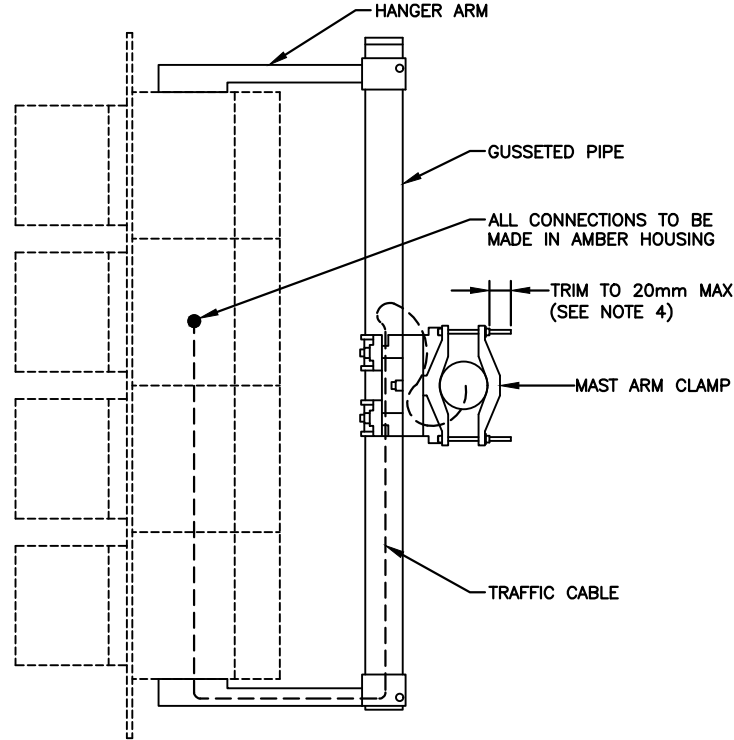


PLAN

REAR VIEW (3-SECTION HEAD)



SECTION A-A (4-SECTION HEAD)

SECTION A-A (3-SECTION HEAD)

NOTES

1. ALL FASTENING HARDWARE SHALL BE STAINLESS STEEL.
2. ANTI-SEIZE LUBRICANT SHALL BE USED WHEN STAINLESS FASTENERS ARE INSTALLED INTO ALUMINUM.
3. TORQUE ALL FASTENERS TO MANUFACTURERS RECOMMENDATIONS.
4. MAST ARM CLAMP FASTENERS TO BE TRIMMED BACK TO 20mm MAX.

ALL DIMENSIONS IN MILLIMETRES EXCEPT WHERE NOTED.



WORKS DEPARTMENT

**TRAFFIC SIGNAL
DUAL-END HANGER**

DWG. DATE: 2016 04
REVISION NO.: 1
REV. DATE: 2021 04
SCALE: N.T.S.

S-410.055