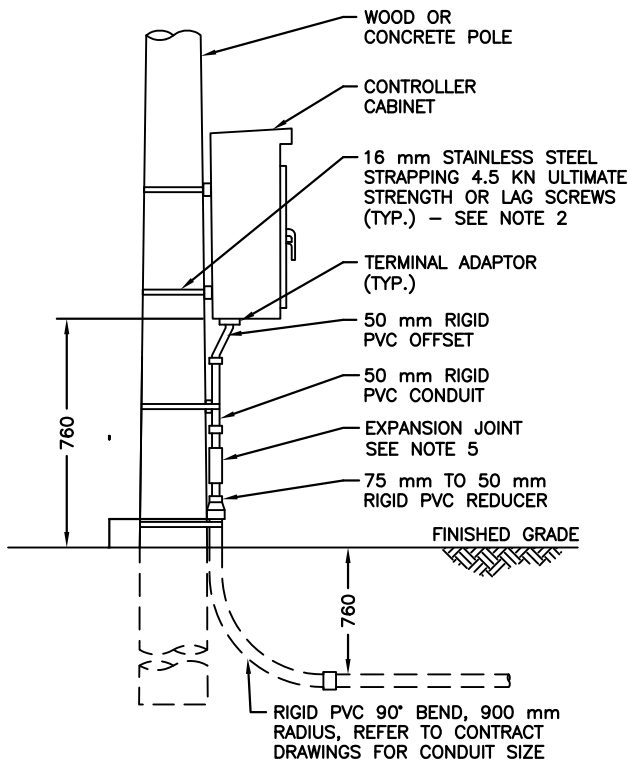
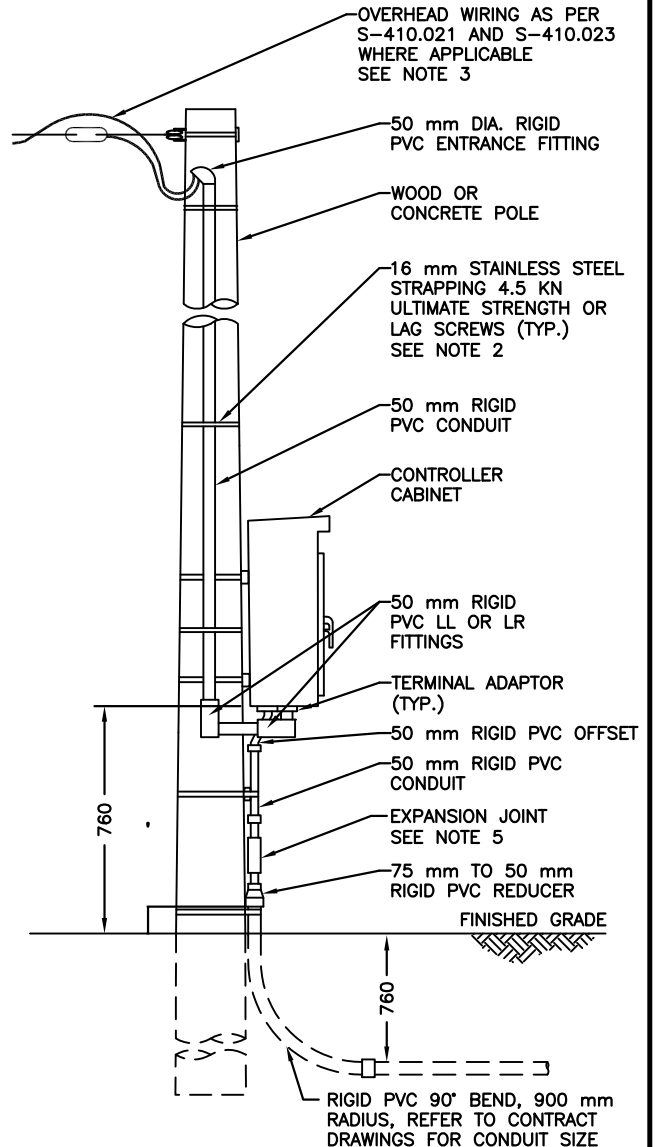


STEEL POLE MOUNTING DETAIL



WOOD/CONCRETE POLE MOUNTING DETAIL (UNDERGROUND WIRING)



WOOD/CONCRETE POLE MOUNTING DETAIL (OVERHEAD WIRING)

NOTES:

1. ALL METAL TRAFFIC SIGNAL HARDWARE AT HEIGHTS LOWER THAN 2.75 m TO BE BONDED TO SERVICE GROUND.
2. ON CONCRETE POLES, MOUNT CONDUITS USING 16 mm STAINLESS STEEL STRAPPING AND BUCKLES. ON WOOD POLES, MOUNT CONDUITS USING GALVANIZED PIPE STRAPS WITH 6 X 38 mm LAG SCREWS.
3. ON CONCRETE POLES REPLACE THIMBLE EYE WITH SECONDARY CLEVIS AND SPOOL INSULATOR INSTALLED WITH 16 mm STAINLESS STEEL STRAPPING.
4. FOR ORIENTATION AND LOCATION OF POLES AND EQUIPMENT REFER TO LAYOUT DRAWINGS.
5. WHERE UNDERGROUND RACEWAYS OR CABLES ARE SUBJECT TO MOVEMENT BY SETTLEMENT OR FROST, PROVISION SHALL BE MADE SO AS TO PREVENT DAMAGE TO THE CONDUCTORS OR THE ELECTRICAL EQUIPMENT.

ALL DIMENSIONS IN MILLIMETRES EXCEPT WHERE NOTED.



WORKS DEPARTMENT

**TRAFFIC SIGNAL CONTROLLER CABINET
INSTALLATION ON POLE**

DWG. DATE: 2008 04
REVISION NO.: 3
REV. DATE: 2013 04
SCALE: N.T.S.

S-410.080