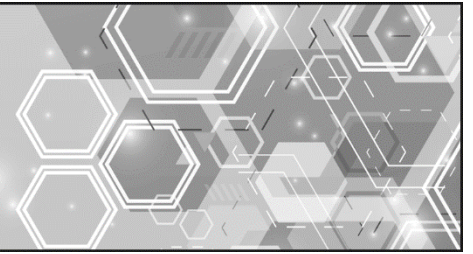




## Durham Region Health Department Facts about...



# Respiratory Syncytial Virus (RSV) Vaccines

## What is it?

**Respiratory Syncytial Virus (RSV) vaccines** protect against a serious respiratory virus. RSV causes illness in the lungs, especially in babies, young children, and older adults. For more information, see [Facts about... Respiratory Syncytial Virus \(RSV\)](#).

There are three publicly funded (free) RSV products available in Ontario:

- **Arexvy®** is a vaccine available for eligible adults 60 years of age and older.
- **Abrysvo®** is a vaccine available for eligible adults 60 years of age and older and eligible pregnant individuals.
- **Beyfortus®** is a medication available for eligible infants and high-risk children.

## How effective is the vaccine?

- **Arexvy®**: In adults, this vaccine was about 94% effective at stopping very bad RSV lung illness, and about 72% effective at stopping other RSV related lung illness.
- **Abrysvo®**: When given to pregnant women, this vaccine lowered the chance of their babies needing hospital care for RSV by about 57%, and lowered RSV illness in babies by about 51%.
- **Beyfortus®**: In healthy babies, this medication lowered RSV illness by about 80%. It also helps protect babies at higher risk (born early, or with heart or lung problems) during their first two RSV seasons.
- It is recommended to receive one product as a single dose for eligible populations. Researchers are still studying how long one dose of the vaccine can protect you for.

## What is the schedule for the RSV vaccine?

- RSV vaccines are given as a single dose during the fall respiratory season to eligible individuals.
- RSV vaccines can be given at the same time as other vaccines, including live vaccines.

... over

905-668-2020 or 1-800-841-2729 | [durham.ca/health](http://durham.ca/health)

If you require this information in an accessible format, contact 1-800-841-2729.



# Who should get the RSV vaccine?

The following people can receive the vaccine for free.

Arexvy and Abrysvo	Beyfortus	Abrysvo
<ul style="list-style-type: none"> <li>• People 75 years of age and older.</li> <li>• People 60 to 74 years of age AND:               <ul style="list-style-type: none"> <li>○ Live in long-term care homes, eldercare lodges or retirement homes including similar settings (e.g., co-located facilities).</li> <li>○ Are in hospital receiving alternate level of care (ALC) and similar settings.</li> <li>○ Have glomerulonephritis (GN) who are moderately to severely immunocompromised</li> <li>○ Are receiving hemodialysis or peritoneal dialysis.</li> <li>○ Have solid organ or hematopoietic stem cell transplants.</li> <li>○ Are experiencing homelessness.</li> <li>○ Identify as First Nations, Inuit, or Métis.</li> </ul> </li> </ul>	<ul style="list-style-type: none"> <li>• Infants born April 1 or after <b>and</b> less than 8 months of age up to the end of the RSV season.</li> <li>• Children up to 24 months of age who are at risk to severe RSV disease through their second season, following discussion with a health care provider.</li> </ul>	<ul style="list-style-type: none"> <li>• Pregnant individuals from 32 to 36 weeks gestation who will deliver during the RSV season, following a discussion with a health care provider.</li> </ul>

People aged 60 years and older who are not eligible for the publicly funded (free) RSV vaccine can get the vaccine at a pharmacy with a prescription from their primary care provider. People who get the RSV vaccine at their local pharmacy will need to pay out of pocket.

If someone has previously received a dose of Arexvy or Abrysvo they **do not need** to receive another dose this season, as booster doses are not currently recommended.

## Who should NOT get the vaccine?

People who have a known hypersensitivity or history of severe allergic reaction (anaphylaxis) to a previous RSV vaccine or to any part of the vaccine should not get the RSV Vaccine.

## Are there side effects with the vaccine?

- Common side effects are redness and pain where the needle was given, tiredness, fever, headache, nausea, diarrhea, and muscle or joint pain.
- If you think you are having a serious reaction, see a health care provider right away. Any new or important changes in your health or your child's health after a vaccine should be reported to a health care provider and the Health Department at 905-668-2020 or 1-800-841-2729.

For more information, visit [Respiratory Syncytial Virus \(RSV\) - Region of Durham](https://www.durham.ca/health/respiratory-syncytial-virus-rsv).

September 10, 2025